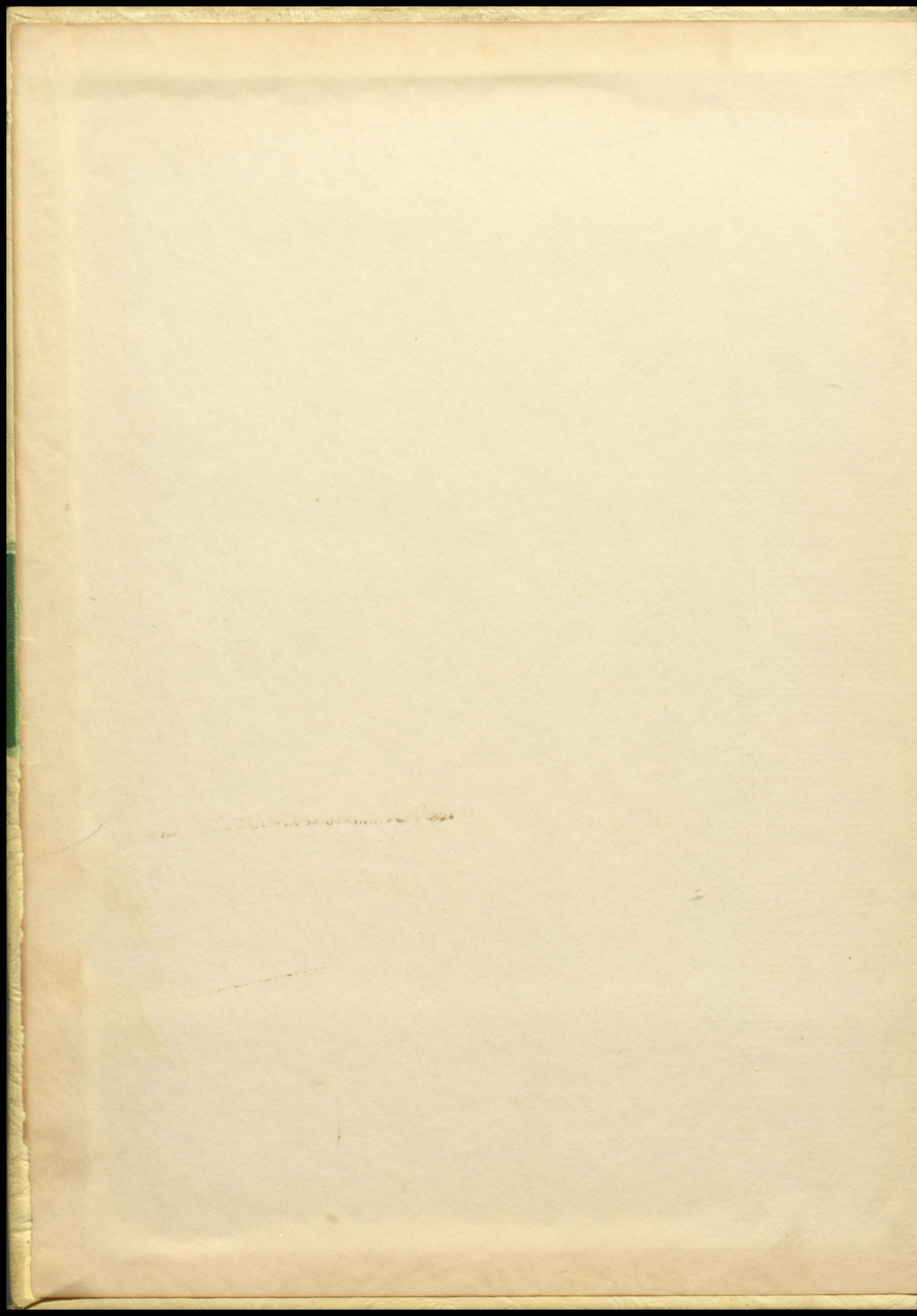


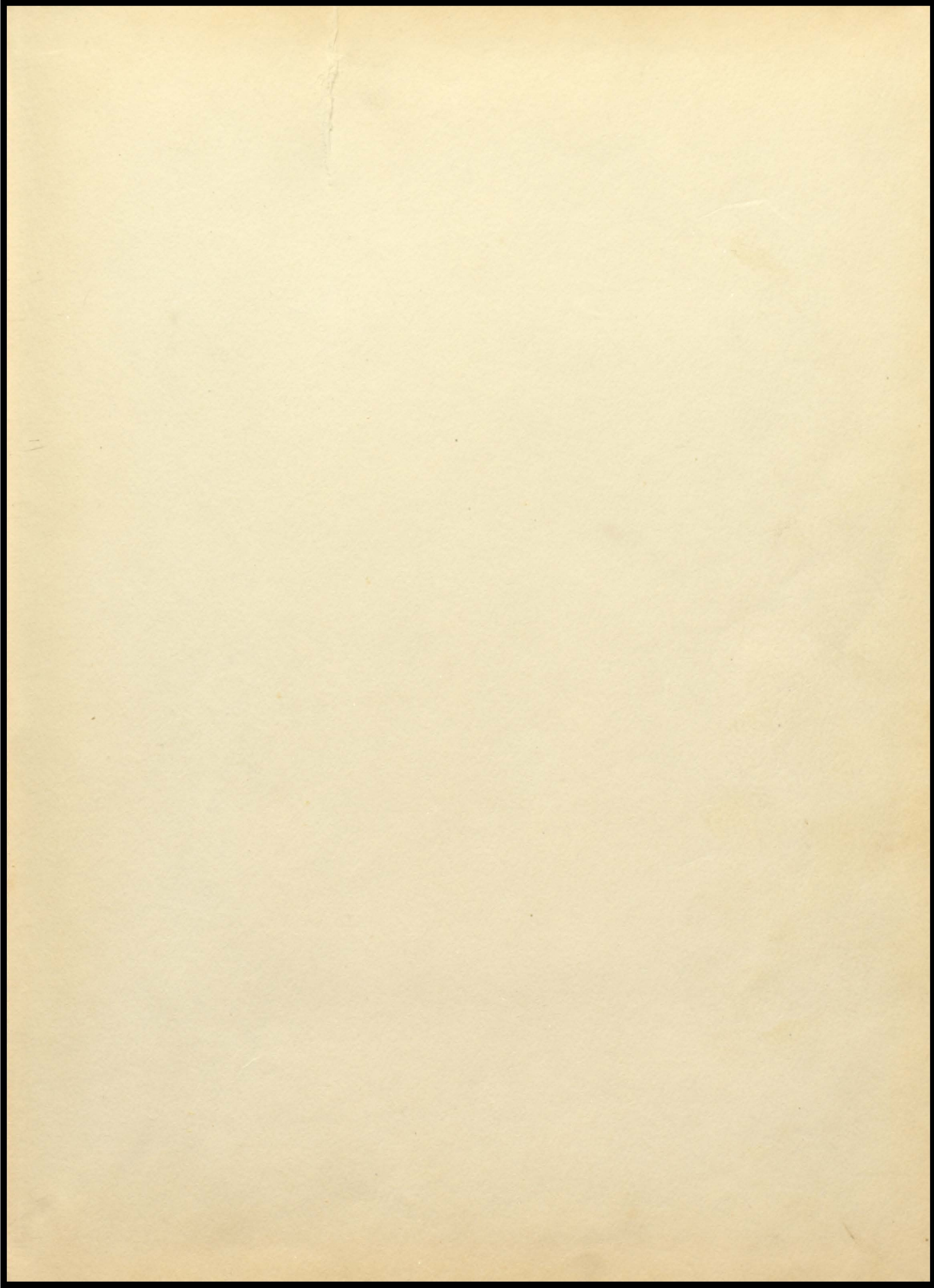


CARDINAL

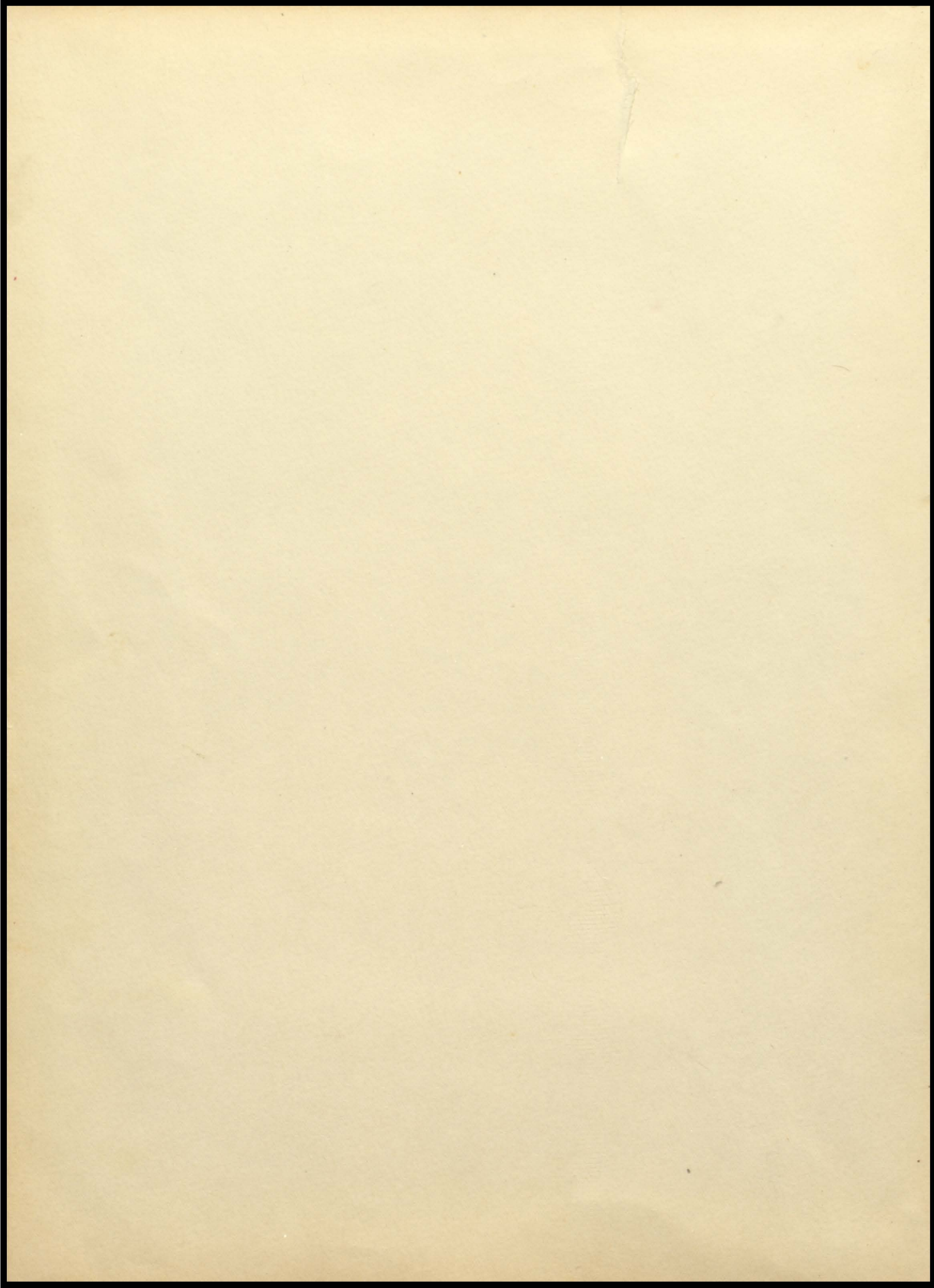
1 9 5 2



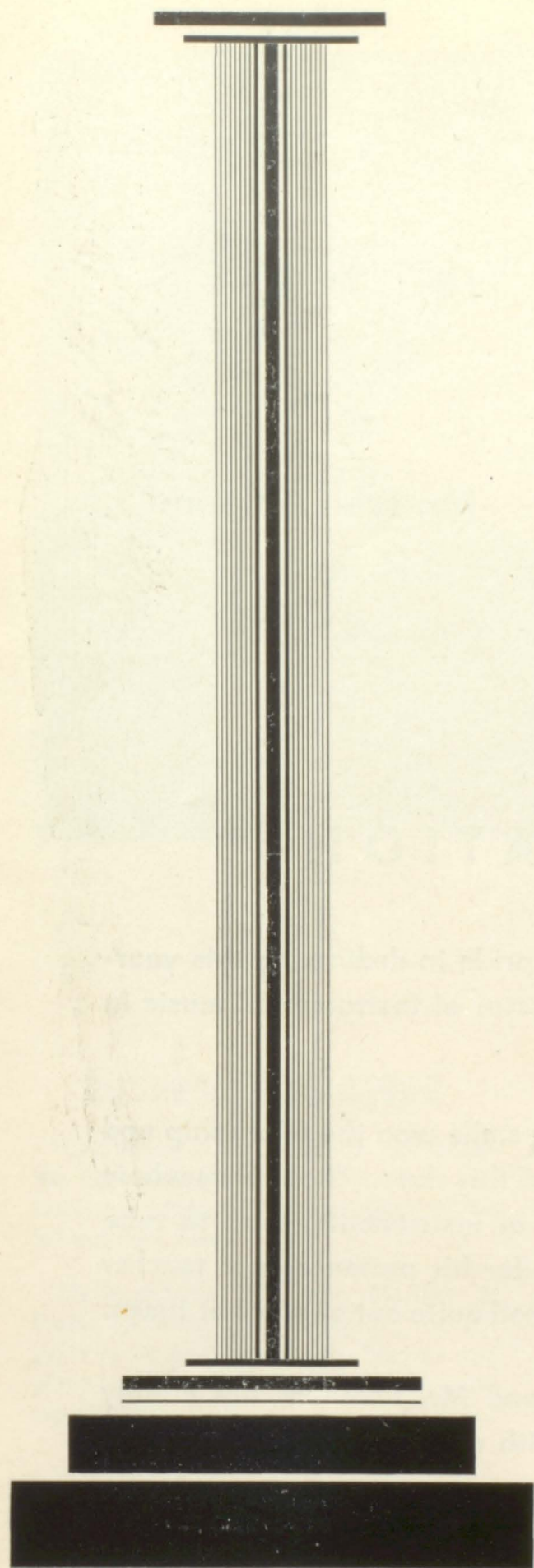












# DEDICATION







We honor - -

**Mr. Fred Colonna**

## **DEDICATION**

The Class of 1952 takes pride in dedicating this year-book to Mr. Fred Colonna, director of instrumental music in our school.

His kindness and winning smile won the friendship and admiration of all the members of this class. Those of us whom he instructed in various kinds of instruments, wish to take this opportunity to thank him for his patience as a teacher when the notes we played seemed quite out of place at times.

Our music department and Mr. Colonna, are closely associated, for he has been with us for the past nine years.

We wish you continued success in the years ahead.





Dr. H. M. Wellman

## IN MEMORIAM

In fond memory of Dr. Wellman, whose untiring efforts and interests in the school will be felt forever.

Respect and gratitude will remain always in our thoughts of him.

## IN REMEMBRANCE

The Senior Class wishes to remember Mr. Helmintoller, our former coach and history teacher, who was re-called to the Service last June.

He is serving with the Marines at Camp LeJeune, North Carolina. He expects to be discharged this summer and plans to return to his teaching and coaching position.



James R. Helmintoller



## BOARD OF EDUCATION



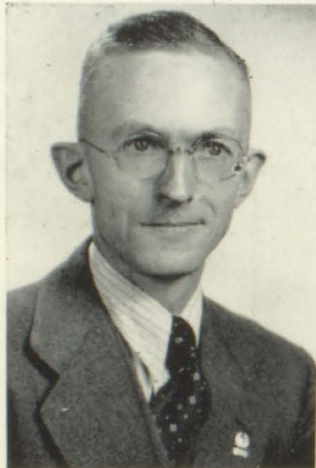
Robert Milliren  
President



Kenneth Yingling  
Treasurer



Donald Lynch  
Vice President



William Morgan



William Barlett



Charles Koos



Ralph Watson



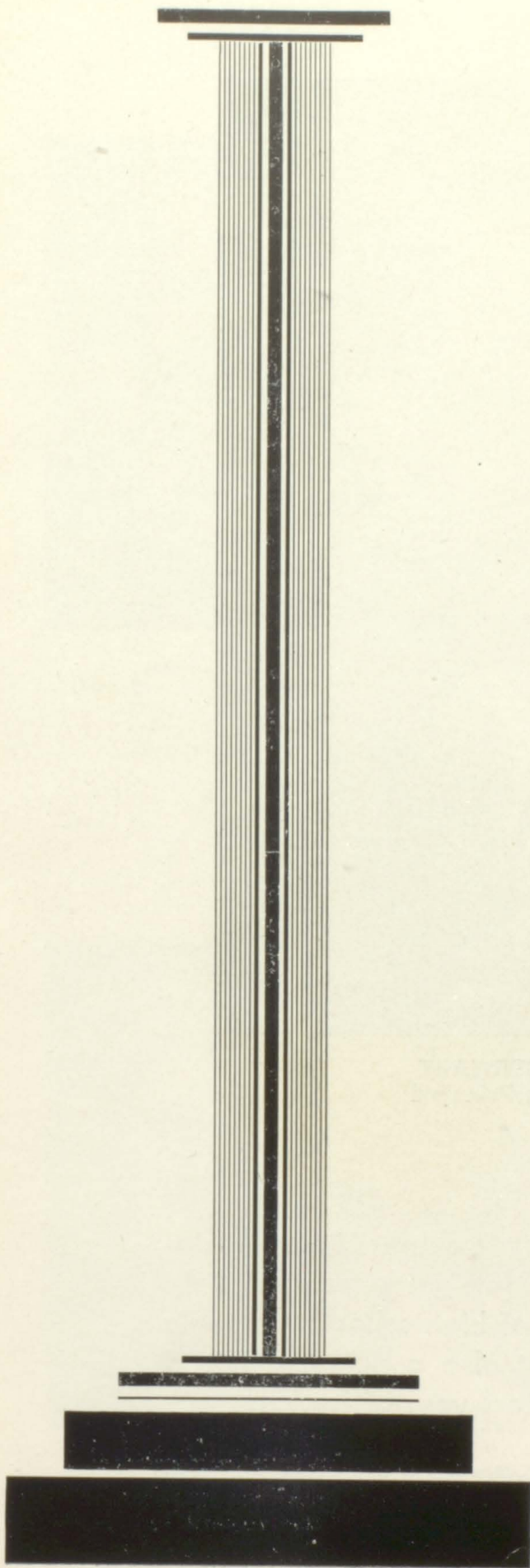
Lawrence Linnon



D. B. McQuiston

Glenn R. Kester  
Secretary





FACULTY





BUDD B. STEWART  
Supervising Principal

The Senior Class wishes to express its appreciation to you, Mr. Stewart, for guidance and help throughout our four years of high school. Not only have you been adviser but also a personal friend to every individual who enters your office.

May future classes profit by your wise counsel as the class of '52 has profited.



## FACULTY



**MR. PAUL TOY**  
Clarion State Teachers College, B. S.  
Carnegie Tech, M. S.  
Mathematics, Science  
Senior Class Adviser



**MR. RAY SWITZER**  
Clarion State Teachers College, B. S.  
History, Science



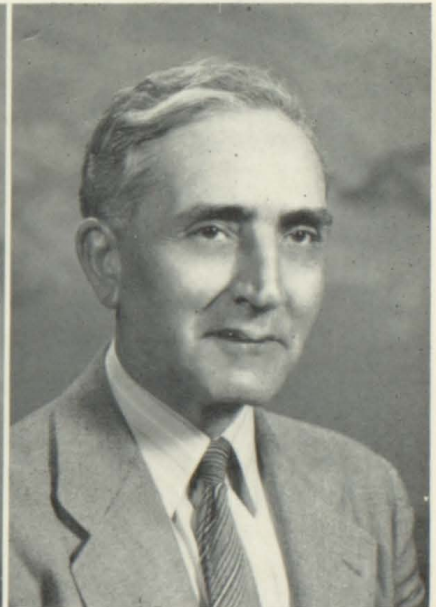
**MRS. TERESE HELMINTOLLER**  
Duquesne University, B. E.  
Commercial



**MISS MARY ANN PORTER**  
Grove City College, B. S.  
English, Spanish



**MRS. B. F. MCGINNIS**  
Peabody — Baltimore  
Vander Cooks, Chicago



**MR. FRED C. COLONNA**  
St. Pietro Maiello Conservatory, Italy  
Indiana State Teachers College  
Instrumental Music



## FACULTY



MISS PHYLLIS HALE  
Clarion State Teachers College, B. S.  
Ohio State University  
Grade 1



MISS ISABEL JONES  
Clarion State Teachers College  
Grade 2



MRS. ELIZABETH EARLE  
Slippery Rock State Teachers College, B. S.  
Westminster College  
Grade 3-4



MISS RESSIE HEETER  
Clarion State Teachers College, B. S.  
Grades 5-6



MRS. ELGIE POTTS  
Clarion State Teachers College  
Grades 6-7

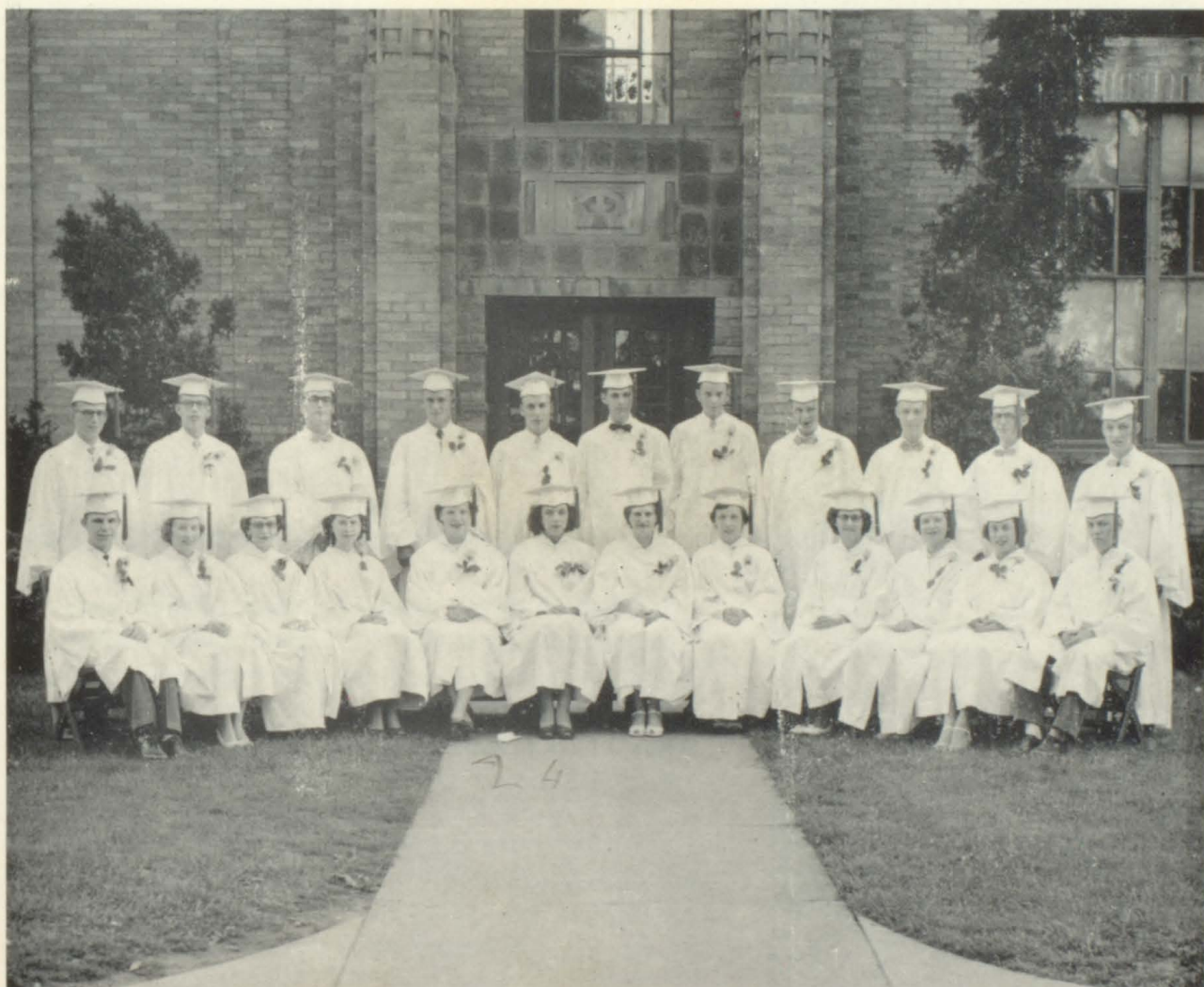


MRS. DELLA FILLMAN  
Clarion State Teachers College, B. S.  
Underwood Elliott Fisher  
School of Business, Washington, D. C.  
State College  
Marshall College, Huntington, W. Va.  
Grades 7-8





# SENIORS







**JAMES OLIVER ASHBAUGH . . . "Rabbit"**

Rabbit is the live-wire of the class, hailing from St. Petersburg and wherever there is laughter you can find Jim right in the center of it. He was a very faithful worker on the yearbook, and without his help as stage manager, our Senior Play would not have been so great a success.

Jim has been working as a delivery boy at a local business concern, but is planning to make the Navy his future. Good Luck!



**BETTY LEE BARTOW . . . "Betts"**

Betty, with her pleasant manner towards everyone, is one of the most popular girls in our class. She was a member of the cheerleading squad and has been active in band and orchestra throughout her school years. She was a member of both Girls' and Mixed Chorus and took part in the Senior Class Play as Diane.

Allegheny General will welcome her, for we are certain that she will be among the best of nurses.



**WILLIAM ALBERT COUCHENOUR . . . "Bill"**

There's never a dull moment as long as Bill is around; and in the short time he was with us, his impish manner won him many friends. Bill was one of our star basketball players. He played a very important title in helping the "Saints" to attain the title of "Champs" for two years.

Bill's future is undecided at the present, but his ability to get along with all will guarantee him success.



**DONNA JEAN BEST** . . . "Besty"

Donna is the "square dancing lass" hailing from Turnip Hole. She can be seen often flying past in her green Hudson Hornet and is usually headed for a square dance. She has participated in both Girls' and Mixed Chorus and was in both operettas. She will be remembered as "Marilla" in the Senior Play by all those who saw it.

She plans to further her education at Grove City College. Luck in the future Donna.



**JAMES STOCKDON HERZEL** . "Speed"

Jim is one of the quiet ones of our class. In spite of his quiteness, though, Jim gets into his share of trouble. He was a member of the band and took the part of "Otto" in the class play. Jim's favorite subjects are Science and Math.

The fall term will find Jim a Freshman at college. We all wish Jim the best of luck and success in his future years.



**DOLORES JEAN BUNCH** . . "DeDE"

This friendly little miss hails from Turkey City, and is particularly noted for her "Hello" and a pleasant smile. She was in the Girls' and Mixed Chorus during her four years of high school, and took part in the operettas. You may remember her as the smiling girl who ushered you to your seats the night of the Senior Class Play.

Dolores has not made any definite plans for the future, but we are sure that she will succeed in whatever she attempts. Best of Luck.







**FORREST EARL JACKSON**

**"Bud"**

Bud, the Frank Sinatra of our class, resides in the town of Knox. He has had much interest and enthusiasm in vocal classes. Boys' Chorus, Mixed Chorus, and the quartet. He was in both operettas, played "Tommy" in the Senior Play, and guard on the Varsity basketball team. Bud was one of the most popular boys in our class and represented the class by being president. He is Salutatorian of our class.

Grove City College will find him an excellent student and athlete.



**PAULINE ALBERTA DE LOE**

**"Sunshine"**

One of the taller members of our class, Pauline, represents Turkey City. She was a four year participant in both Girls' and Mixed Chorus, and she played the part of "Magnolia" in the Senior Play.

Pauline's plans for the future are indefinite, but we know that she will do well in whatever career she follows. The best of luck, Pauline.



**KENNETH WALTER KING**

**"Ken"**

Active and quick witted—that's Ken. He has been president of the class for two years and this year was elected treasurer. As editor of the yearbook, he had much of the responsibility of planning for its successful publication. With natural athletic ability, Ken was in all the sports the school offered. He was a member of the varsity line-up this year.

Ken's plans for the future include a college education. We know he will be a fine geologist.



**IDA PEARL JACKSON . . . "Minnie"**

This attractive mademoiselle from East Foxburg is one of the sparklers of our class. Her laughter is heard at all times, and her pleasant smile is an asset to the class. Participation in extra curricular activities, cheering, band, orchestra, Girls' and Mixed Chorus, Girls' Trio, two operettas, and "Peachie" in the play, has been her primary interest.

In June she begins her training to become a nurse and we wish her the very best of luck.



**THOMAS ARNOLD LEAVY . . . "Sam"**

This handsome and modest athlete is from Turkey City. Few could match his record of four years of Varsity basketball. He was chosen as one of the co-captains this year and is well-known for his long shots. Tom is well liked by all the students and faculty members.

We wish Tom the best of luck and success.



**KAY RUTH KLINGLER . . . "Kay"**

Kay, who seems to be extremely quiet, is exactly the opposite. Kay was prompter for our Senior Play. With much ability in the musical field, she was an interested and ambitious member of both Girls' and Mixed Chorus and both operettas as well.

Although Kay has made no definite plans for the future, her keen wish to further her education in music will undoubtedly be the course she will follow.







**THOMAS WARD McELHATTAN**

**"Mutt"**

Tom, one of the most mischievous of our class, hangs his hat in St. Petersburg. His fine voice made him an active member of the Boys' and Mixed Chorus for four years, and a member of the Boys' Quartet for two. He was given leads in both operettas. Tom portrayed "Gus," in the Senior Play. In the publication of the school paper during his Junior year, Tom was assistant editor.

Tom is hopeful of finding a good position soon after graduation, and here's wishing you luck!

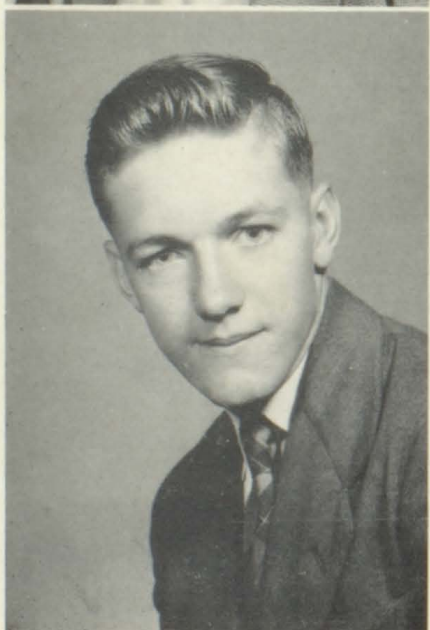


**SHIRLEY JEAN KRIBBS**

**"Gabby"**

This loquacious one reports from Foxburg and is the class's only representative from there. Shirley held the office of secretary her Junior year in addition to being editor of the school paper. In the Vocal department she became a member of the Girls' and Mixed Chorus and was given a part in both operettas. Her "special room" being "201" where she served as librarian for three years.

She'll represent the class in the teaching profession with her plans for registration at the college in Clarion, come fall!



**DONALD GEORGE MYERS**

**"Jody"**

Short and stocky—that's Don. Baseball finds him forever interested and an excellent player too with much natural ability. He is well-liked by all the students. He was elected Secretary of the class this year. During his sophomore year he was manager of the basketball team.

Don may choose a college career, and we wish him success and good luck.



**HELEN MARIE LINAMEN . . . "Amy"**

This senorita holds the title of "songbird" of our class. No year has found Helen without much enthusiasm and eagerness for singing in the Girls' and Mixed Chorus. Gifted with an excellent voice, she received leading parts in the operettas and became a member of our Girls' Trio. She was one of a select few to represent the school in both District and State Chorus. Remember Helen as Kitty in the play.

In whatever career she chooses, we know Helen will meet with success.



**HOMER GEORGE NEVEL . . . "George"**

This tall, good-looking fellow with the impish grin, resides in St. Petersburg. He is very good-natured, and as a result, he wears a steady smile. He played basketball throughout his high school years and was quite a help to the team.

Homer has made no definite plans for the future, but we wish him the best of luck in whatever he does.



**MARGARET JANE LINNON . . . "Peg"**

This pretty, petite lass from St. Petersburg was one of the most popular members of our class. The cheerleading squad was fortunate in having Peg throughout her four years of high school. She was quite the clarinet player in band and orchestra. She was also a member of the Girls' Chorus and the Mixed Chorus for four years and had leading roles in the two operettas. The blonde, as "Iona," was really Peg is the Senior Class play.

Peggy will become the bride of Richard Hoover in the near future. The class wishes you much happiness.







**JAMES ARTHUR SHEELY**

**"Governor"**

Jim is another resident of St. Petersburg. He has been a most diligent worker in any project or activity of the class—a most willing assistant. Jim played "Lawyer Hackett" in the Senior Class play.

With his pleasant manner and initiative, Jim will meet with success in anything he follows.

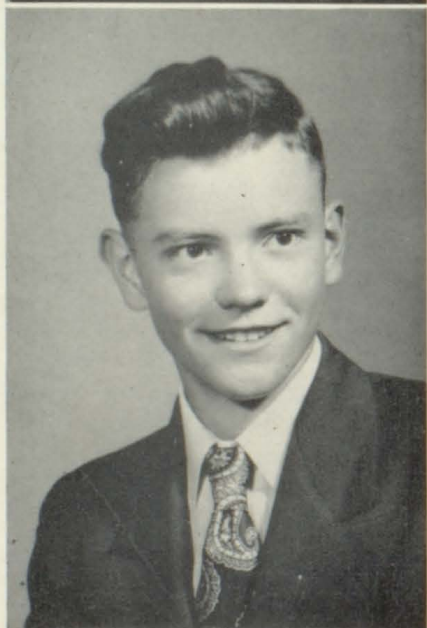


**PHILOMENA LOUISE NOVAK**

**"Sis"**

Sis, the "little" one of our class, is from St. Petersburg. She has led the class scholastically, and by virtue of her achievements was selected as Valedictorian of the class. She shows adeptness in music, piano, band, orchestra, and chorus.

With her ability, she'll be a competent secretary in any office.



**RICHARD SHERMAN**

**"Dick"**

The tallest member of our class is Dick, from Emlenton, R. D. Filled with a good sense of humor, he enjoys pulling his pranks. His pleasing mannerisms and disposition have made him a well-liked school mate.

He will be a handsome Air Force Cadet.



**DONALD TEXTER . . . "Tex"**

Don is the strong, silent senior who resides in St. Petersburg. He likes geography and physics especially and is usually found studying one or the other. Don has been manager of the basketball team for two years and has done a splendid job.

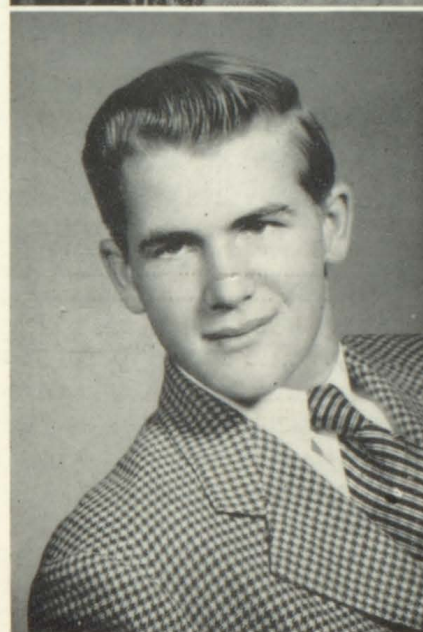
Looks like the Navy will get him so we're hoping that he can swim! Good luck.



**RICHARD WATTS . . . "Watty"**

Rick appears to be a quiet lad with little to say, but he still gets into his share of devilment. His principal like being in sports, he managed the basketball team one year and played on this year's team. An interested member of the class, he was always ready to assist in any activity.

Watty will be working in Sharon after graduation.





# Class History

Have you ever stopped to think how much fun and activity one class could get into four years of high school? Well, listen while the class of '52 tells you.

As Freshmen, we entered Room 201 with thirteen boys and thirteen girls. Thirteen is our lucky number. With Miss Borger as our Freshman advisor, we had two successful skating parties and a bake sale. These three activities plus class dues swelled the treasury to twice the sum of that of previous Freshman classes.

We also contributed a great share to the extra-curricular activities. All members participated in vocal music; four were members of the orchestra, and six were members in the band. In the sports field, we had three girls as Junior Varsity cheerleaders, one Varsity basketball player; six on J. V. basketball team and nine on the baseball team.

Bringing the year's activities to a close was the picnic at Mickey where there was swimming and games, topped with a weiner roast.

## CLASS OFFICERS

President .....	Kenneth King	Treasurer .....	Betty Bartow
Vice President .....	Peggy Linnon	Secretary .....	Donna Best

Now, being Sophomores, we had worked our class into the setting of high school life. As a progressive class, we tried to increase the funds in the treasury. We continued to take part in extra-curricular activities. Five of the six J. V. cheerleaders were from our class. Four of our members continued to play J. V. basketball, while Tom Leavy played Varsity.

In the instrumental and vocal departments we were still well represented.

This year's activities were also brought to a close by a class party.

## CLASS OFFICERS

President .....	Kenneth King	Treasurer .....	Betty Bartow
Vice President .....	Peggy Linnon	Secretary .....	Donna Best

Our Junior year rolled around quite quickly. All twenty-four of us set to work to earn much needed money. The class sponsored a skating party, a card party, and a bake sale.

There were four of the Junior boys on the victorious basketball team. Our class continued to be enthusiastic participants in extra-curricular activities.

We closed our year by honoring the Seniors with the annual banquet and prom on May 11, which we all enjoyed immensely.

## CLASS OFFICERS

President .....	Tom McElhatten	Treasurer .....	Sally Bowser
Vice President .....	Forrest Jackson	Secretary .....	Shirley Kribbs

Finally we came back to school as Seniors and proud to think that we were now faced with many important event.

Our class has been a most energetic one this year. It contributed five members to the band and four members to the orchestra. Peggy Linnon represented our school at Mid-Western Band, and Helen Liamen represented our school at Mid-Western Chorus.

The class-play "You'll Die Laughing," was presented under the supervision of Miss Porter.

The Seniors went out for sports in a big way. On the basketball team, we had Tom Leavy, Bill Couchenour, Bud Jackson, Ken King, Richard Watts, and Homer Nevel. The three senior Cheerleaders were Peg Linnon, Betty Bartow, and Ida Jackson.

On May 8, 9, and 10, we enjoyed a trip to Washington, D. C. The Junior-Senior Banquet and Prom on May 23, was a huge success and a very enjoyable affair.

Baccalaureate came too quickly, and finally the big night, Commencement. We received our diplomas and were happy to be high school graduates, but it was saddening to think we were leaving so many friends and teachers.

Now, we are ready to face the world and the great challenge it offers to young people today. We realize the things that are ahead and we are ready to do our best in whatever we attempt.

## CLASS OFFICERS

President .....	Bud Jackson	Treasurer .....	Ken King
Vice President .....	Tom Leavy	Secretary .....	Don Myers



# Class Prophecy

Since the top speed of our Patrol Rocket is only seventy million light years an hour, it takes us about 2 1-2 hours to reach Soloxius pleuralisus, during which time we have nothing to do. One Sunday afternoon, while on the way to see Uncle Paul, we decided to look into our cosmic ray projectoscope, to see our old buddies of '52.

In a television studio, along with props and cactus plants, stampeding cattle, and wild indians; we see, on a red and black pony, Two Gun Tex, galloping at top speed, waving his hat and shouting Hi Ho Silver Away. As he skids to a stop, showering the cameras with peeling varnish, we see it is none other than Don Texter now rounded to a good 327 pounds.

Dialing to Chicago, in the Rainbow Arena gym, we see a tough little fighter going at it. As we bring the picture in closer, he with a flip of the wrist, tosses his 400 pound opponent out of the ring. We see that his beaming face resembles Don Myers—and that's who it is. He said that he'd been in the ring nigh on to 20 years. He is now having trouble because he can't find an opponent who will stay in the fight long enough for a good television show.

Looking over toward the Hawaiian Islands we see bubbles. By turning on our super penetrator we see that these are coming from a tunnel. Inside the tunnel, in special built submarines, we see Ken King who is digging the tunnel for whales, which formerly had to take a detour around the island on their migratory trips.

On the island we see a large hospital. On the twelfth floor we see a doctor in white coming into the hall from surgery. Upon closer inspection, we see that it is Dr. Bartow, the nose specialist. Here is where she works, helping people to smell, while she is awaiting Ken's semi-annual return from the depths of the ocean.

Turning to Hong Kong, we hear a babble of voices. We are in a school-room. The teacher is saying something in Chinese. She looks familiar, and as she turns toward us, we see it is Shirley Kribbs.

Down in the Amazon territory, we see, on closer inspection, a great project, a railroad up the middle of the river. Resting in a rubber boat, we see the mastermind of the undertaking. Jim Herzel explains that by building the railroad on pontoons, we will save cutting out the brush and laying a road-bed in the jungle. However, we are having a bit of trouble with the man-eating crocodiles.

Up in Pittsburgh we see that a ball game is in progress. The pitcher spits to test the wind, gives a hard look at all the umpires, strikes three men out, throws down his glove, and walks to the dugout. There we see that it is none other than Tom Leavy. Tom said "Hello" to us, and said if we wanted autographs, we would have to buy them at the gate.

Also in Pittsburgh we see a large used car lot. A huge blinding neon sign flashes "Mut & Jeff Fine Used Cars." Asleep in the office, we see Tom McElhattan and a short friend of his, evidently Jeff. Not wanting to disturb them, we quickly switched up to the Petersburg district.

On a hillside covered with color, little woolly objects are moving around. Why, they are sheep! Nearby we see a farmer who turns out to be Jim Sheely. He said he had the biggest sheep ranch in the state. "But why in all different colors?" we ask. "Well," he said, "I have a contract with an Indian blanket manufacturing firm. I grow the sheep all different colors so that they won't have to dye the wool." A good idea perhaps!

In Knox, Pa., we see a large building going up. However, it is only one story high. We go inside to see the manager of the building. There we see Bud Jackson strutting around. Upon questioning, he reveals that we are in the new Underwood Hotel. A building on one floor eliminates elevators and steps. Everything is for the convenience of the guests. There is even a small street car to eliminate walking. Hurrying to get out of the way of the carpet layers, we move on to Licking Township.



Here we hear an exasperated voice calling as if for the umpteenth time, "Peggy, hurry and get up or you'll be late for school!" Then we see Peggy Linnon muttering to herself, "Why my daughter doesn't get in nights, I'll never know."

Under the P. R. R. bridge we see somebody fast asleep with a fishing pole and a large fish tugging at the line. Of course we wake him up and as Homer reels the fish in, he tells a few fish stories. We asked him what else he did besides fishing and he replied that he is retired. He was a R. R. detective but after he captured the Smith gang in '55, he was retired with a sizeable pension, besides the large reward.

In Emlenton we see another new building which is quite sizeable. In the tile facing could be read, "Supermarket." In the office Dick Sherman was hard at work. He said he was pretty busy, so we looked around ourselves. If there is any thing you need and can't find in other food stores, he is sure to have it.

Our next stop is the Clarion Glass Co. On a door we see in black and gilt lettering and under a long title, the name of Philomena Novak. It says, "Walk In." We cautiously open the door and look in. Seated at the secretaries desk Richard Watts is furiously typing a letter. Seeing us, he smiles and said that Miss Novak will be back in about an hour. We reply that we really can't stay and must be on our way.

From the smell of antiseptics we think we are in a doctor's office, or a hospital. I didn't run the dial this time, and, not knowing I was going to write this, didn't ask where it was. We see a nurse bustling about, but she, Ida Jackson, says she likes it here. However, she is always glad to go home at night to her waiting husband, Ed.

There is a bang from the starter's gun, a roar of engines, squealing of tires, and, out of a cloud of dust, there came the hot rods. As the race nears the end, we see that number 13 is away in the lead. "The winner, Jim Ashbaugh, driving car 13, blares the loudspeaker. Jim says, "I do it every day."

Now we are in Madison Square Garden seeing a game between the two top professional basketball teams of the world. As the "Leaguers" dump in another basket, making the score 110-110, the crowd goes wild. The "Leaguers" are making a terrific come back in the last of the game since they put in the mighty Bill Coke.

In the Metropolitan Opera House we are witnessing a great love scene. As everybody is dying in the end, the curtain comes down amid thunderous applause. Fighting our way backstage, we finally get a glimpse of the star, Helen Linamen, as she reaches the dressing room door.

Up in the broadcasting booth we see a familiar face. Behind wires and microphones, whistles, and what not, we see Kay Klingler who is filling in Rosie Rosewell's seat. We would talk to her, but she is having a hard time keeping track of the Pirates runs.

Looking in at S. P. R. T. H. S. we find that the school has grown considerably in size. Mr. Stewart now has a two room office. In back of the secretary's desk is Pauline Deloe. Right now she is busy running the paper correcting machine. We go in to talk to Mr. Stewart.

While around Petersburg we could not help noticing all the posters on the telephone poles and all the bill boards. Under a picture was written, "Vote for Delores Bunch, Candidate for Governor. The Housewife's Choice."

Other notices were out for a reward of \$500.00 to anyone who could out dance Donna Best, the Square Dancing Champion. We understand that Donna has had this title for over 12 years now, and she said that she would keep it for at least 12 more.

Well, it's time to land and turn off the projectoscope. We climb down and enter a very scientific looking building. We see Mr. Toy under a pile of apparatus and microscopes. Mr. Toy, who retired from the teaching profession years ago, is now up to his neck in research and doing quite well. I could list his discoveries, but haven't the time or any more paper so I will close. You will have to forgive my spelling and English for they do not teach such nonsense these days.



# **Last Will and Testament of the Class '52**

**We, the Class of 1952, being of supposedly sound mind and body do hereby declare this our last will and testament.**

ARTICLE I. To Mr. Stewart we leave our Best Wishes for another class like ours.

ARTICLE II. To Miss Porter, we leave our "very good" acting ability.

ARTICLE III. To Mrs. Helmintoller we leave some new typewriters.

ARTICLE IV. To Mr. Toy, we will what's left of the lab equipment.

ARTICLE V. To Mr. Switzer, we will our Best Wishes for future basketball years.

ARTICLE VI. Personal Wills:

- I, Betty Bartow, will my pleasing personality to Ken.
- I, Kay Klingler, will my driving ability to Joyce Watson.
- I, Philomena Novak, will all my spare time to Tom.
- I, Ida Jackson, will my gift of gab to Peggy Foust.
- I, Bud Jackson, will my cherry picking ability to Alec Robertson.
- I, Tom McElhattan, will anything to anyone who wants it.
- I, Dolores Bunch, will my letter writing ability to Joyce Watson.
- I, Donna Best, will the Hudson to anybody who can afford to buy gasoline for it.
- I, Jim Herzel, will my shoes (size 12) to Terese.
- I, Bill Couchenour, will my height to Ernie Koos.
- I, Don Myers, will a date with Jeannie to Bobbie Hutchison.
- I, Dick Watts, will my brains to Alec Robertson.
- I, Dick Sherman, will my shorthand to Darwin White.
- I, Don Texter, will my driving ability to P. D. Koos.
- I, Homer Nevel, will my brainy dome to Dick Konkle.
- I, James Sheely, will my little finger on my right hand to anyone who wants it.
- I, Peggy Linnon, will my flirtiness (which I acquired from Frances Master) to Shirley Edinger.
- I, Helen Linemen, will my false teeth to Tom Page.
- I, James Ashbaugh, will a carton of cigarettes to "Fuzz" Ashbaugh.
- I, Shirley Kribbs, will my ability to gab to Jo Elaine.
- I, Pauline DeLoe, will my typewriting and shorthand ability to Betty Hanst.
- I, Ken King, will my language \*x-&!! to the teachers especially to Mrs. Helmintoller.

# Class

Name	Alias	Favorite Pastime
Jim Ashbaugh . . .	"Rabbit" . . .	Traveling to Boiler Room
Betty Bartow . . .	"Bet" . . .	Riding a Chevy
Dolores Bunch . . .	"DeDe" . . .	Writing
Donna Best . . .	"Besty" . . .	Draving a Hudson
Bill Couchenour . . .	"Coke" . . .	Fixing the Frazer
Pauline Deloe . . .	"Sunshine" . . .	Writing
James Harzel . . .	"Speed" . . .	Inventing
Forest Jackson . . .	"Bud" . . .	Sports
Ida Jackson . . .	"Minnie" . . .	Men
Kenneth King . . .	"King" . . .	Back of the Grove
Kay Klingler . . .	"Gert" . . .	Driving
Shirley Kribbs . . .	"Gabby" . . .	Talking
Helen Linemen . . .	"Any" . . .	Singing
Peggy Linnon . . .	"Peg" . . .	Dick
Thomas Leavy . . .	"Sam" . . .	Baseball
Thomas McElhattan . . .	"Mutt" . . .	'37 Plymouth
Donald Myers . . .	"Jody" . . .	Hitchhiking
Homer Nevel . . .	"George" . . .	Fishing
Philomena Novak . . .	"Sis" . . .	Writing Notes
James Sheely . . .	"Governor" . . .	Hunting
Richard Sherman . . .	"Dick" . . .	Skating
Donald Texter . . .	"Tex" . . .	Westling
Richard Watts . . .	"Wattie" . . .	Sleeping
Mr. Toy . . .	"Paul" . . .	School
Mrs. Helmintoller . . .	"Terese" . . .	Rich
Mr. Switzer . . .	"Smokey" . . .	Women
Miss Porter . . .	"Blondie" . . .	Linnon
Mr. Stewart . . .	"Budd" . . .	Studebakers



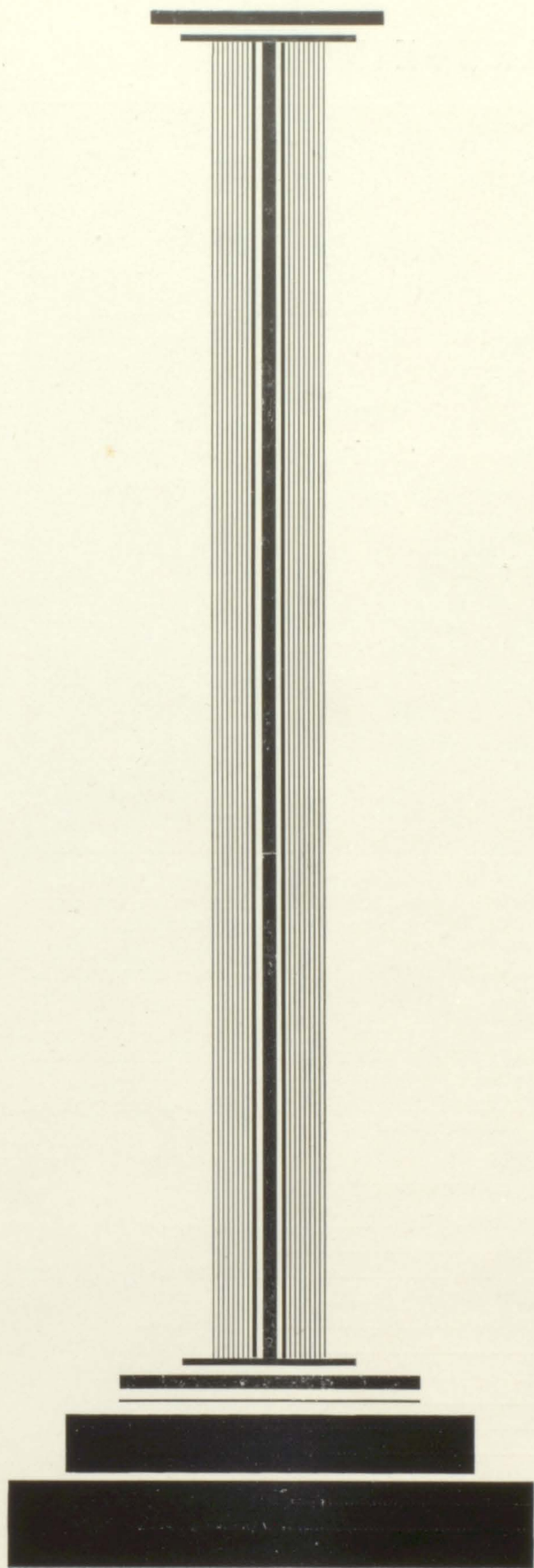
# Mirror

Always Says	Wants To Be	Will Probably Be
Great gobs of sour owl .	Man . . . . .	Mouse
What do you mean? . . .	Nurse . . . . .	House Wife
I don't care . . . . .	House Wife . . . . .	A Waitress
Oh, for gorsh and awfulness	House Wife . . . . .	Old Maid
No, I never . . . . .	Jet Pilot . . . . .	Row Boat Captain
Get out now . . . . .	Secretary . . . . .	Hurty Gurty
Oh, Now . . . . .	Engineer . . . . .	Cross Country Racer
Getting any . . . . .	Bank Teller . . . . .	Embezzler
Oh, you're awful . . . .	Nurse . . . . .	Gypsy
&@*; :: &%/ . . . . .	Geologist . . . . .	World's tallest man
? ?? ??? . . . . .	Millionaire . . . . .	Farmer
Everything . . . . .	Wife . . . . .	Radio Announcer
Oh, You . . . . .	Singer . . . . .	Milk Maid
Good Morning, Mr. Toy .	Wife . . . . .	Elevator Operator
You Blind Imp . . . . .	Sing Sing Warden . . . .	Inmate at same
Did you hear the one about	Cat Trainer . . . . .	Hobo
Are you going to Oil City?	Nothing . . . . .	Traveling Salesman
By George now . . . . .	Bum . . . . .	College Professor
Oh, now . . . . .	F. B. I. Worker . . . . .	Hula Girl
Don't Tell Me . . . . .	Einstein . . . . .	Editor of World Almanac
mmummjuytrevistski .	Midget . . . . .	7' 10"
Want to wrestle? . . . .	Wrestler . . . . .	Preacher
Sorry but I lost my ticket .	Romeo . . . . .	Merchant Marine
If that is necessary go ahead	Married . . . . .	Dagwood
Seniors SENIORS . . . .	With Dick . . . . .	Sergeant in Wacs
Get the Heck in here . .	Tall . . . . .	Carpenter
Buenos Noches . . . . .	Model . . . . .	Blondie
By George . . . . .	Boss . . . . .	Boss

## Songs of Our Times

SLOW POLK .....	by James Herzel
GIVE ME FIVE MINUTES MORE .....	by Homer Nevel
CAN'T WAIT .....	by Peggy Linnon
RUM AND COCO-COLA .....	by Tom Leavy
FUSSIN' FEUDIN' AND FIGHTIN' .....	by Donna Best
SHOT GUN BOOGY .....	by James Sheely
HOT ROD RACE .....	by James Ashbaugh
CRY .....	by Ida Jackson
GIVE ME AN INCH AND I'LL GO A MILE .....	by Bud Jackson
SILENT NIGHT .....	by Kay Klingler
RUDOLPH THE RED NOSED REINDEER .....	by Richard Watts
A-RANTING AND A-RAVING .....	by Ken King
BELOVED, BE FAITHFUL .....	by Betty Bartow
TELL ME WHY .....	by Helen Linemen
UNDECIDED .....	by Philomena Novak
HITCH HIKING BLUES .....	by Don Myers
SMOKE, SMOKE THAT CIGARETTE .....	by Thomas McElhattan
TEA FOR TWO .....	by Shirley Kribbs
WHY DON'T YOU GROW UP? .....	by Dick Sherman
I WANT TO BE LOVED .....	by Dolores Bunch
HOME COOKING .....	by Pauline Deloe
I WANT TO BE LEFT ALONE .....	by Don Texter
I'VE GOT AN OPEN HEART .....	by Bill Couchenour
BLONDE BOMBER .....	Mr. Toy
TOO OLD TO CUT THE MUSTARD .....	by Miss Porter
I'M WAITING ON YOU .....	by Mrs. Helmintoller
SLIPPING AROUND .....	by Mr. Stewart
ON TOP OF OLD SMOKIE .....	by Mr. Switzer
THEY ARE ALL TOO FAST FOR ME .....	by Harvey Hale





# DRAMATICS



## "YOU'LL DIE LAUGHING"



### THE PLAY CAST

Do you believe in ghosts? If you didn't you surely became a trifle bit doubtful when you experienced the "queer sounds" and "spooky goings on" of the Senior Play, "You'll Die Laughing." It was presented on May 2, and directed by Miss Mary Ann Porter.

A handful of heirs met on a stormy night in a weird old Creepy Castle to hear the reading of an eccentric will and to hunt for the precious star-sapphire. Bridget, the comical Irish house-keeper warns all to leave for anybody who remains all night in Creepy Castle "Dies Laughing." The heirs refused to budge and with spooks, including a phantom cat. A portrait sobs real salt tears. A typewriter is manipulated by invisible hands. The ghost-girl gurgles and groans. The ghost man clanks his chains in search of his tongue. Di disappears, Bridget is strangled and DIES LAUGHING.

But at the end we learn not a soul is actually murdered, it's all a hoax which is being played on Tommy to cure him of his phobia for seeing horror moving pictures.

### THE CAST

(In the order of their first appearance)

Bridget Mulquoon, Housekeeper of the late Jason Pike .....	Shyrli Kribbs
Kim Waller, a surprised heir .....	Ken King
Tommy Upton, His stuttering side kick .....	Bud Jackson
Augustus Caesar Jones, Negro handyman, allergic to spooks ....	Tom McElhattan
Peachie Chrysanthemum Jones, The Negro cook .....	Ida Jackson
Levi Hackett, The village lawyer .....	Jim Sheely
Otto Swartz, The suspicious acting truck gardner .....	Jim Herzel
Diana Dalhart, Kim's Heartburn .....	Betty Bartow
Miss Marilla Dalhart, Di's spinster aunt .....	Donna Best
Mrs. Kitty Pike, A giddy widow .....	Helen Linemen
Iona Pike, Her giddier daughter .....	Peg Linnon
The Ghost Girl, Who Died Laughing .....	Pauline Deloe
The Ghost Man, In search of his tongue .....	Homer Nevel





GOOD LORD ALMIGHTY, LOOK!



OH, WHAT A HORRID LOOKING MAN!



## CLASS OFFICERS



### SENIORS

Bud Jackson .....	President
Tom Leavy .....	Vice President
Ken King .....	Treasurer
Don Myers .....	Secretary

### JUNIORS

Alec Robertson .....	President
Ed Chadman .....	Vice President
Mildred Harnish .....	Treasurer
Shirley Shaner .....	Secretary

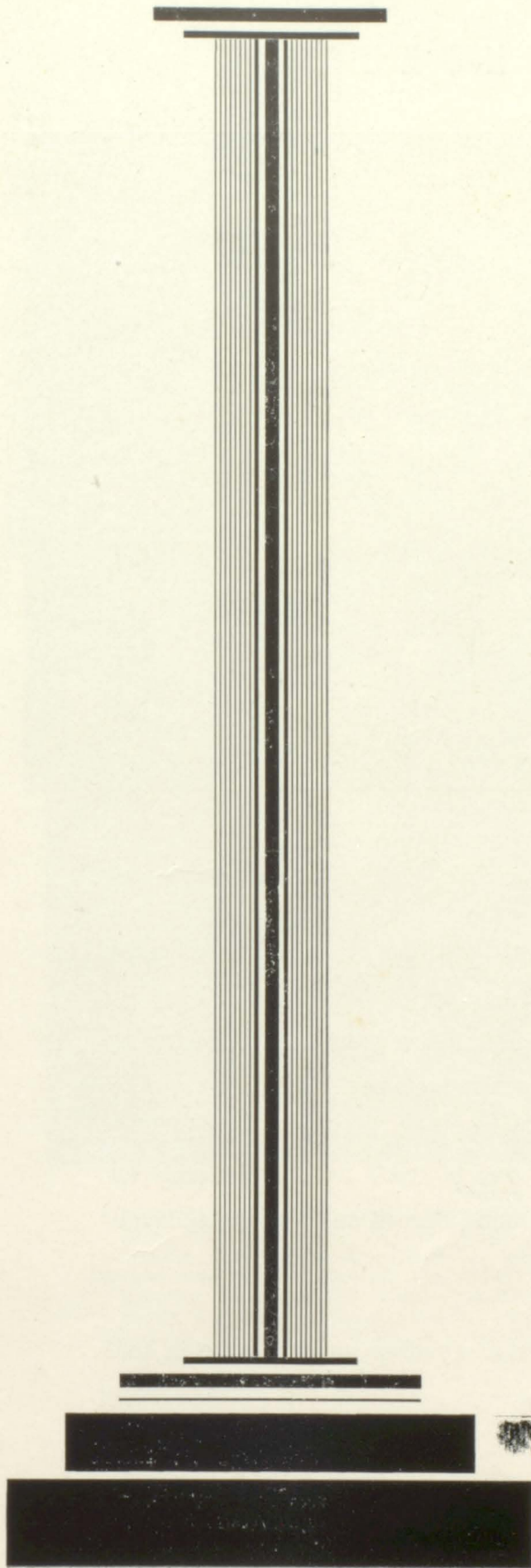
### SOPHOMORE

Terry Nevel .....	President
Donna Burrell .....	Vice President
Bob Shoup .....	Treasurer
Nancy Heckathorne .....	Secretary

### FRESHMEN

Arthur Bell .....	President
Grant Crawford .....	Vice President
Nancy Ashbaugh .....	Secretary
Kay Neely .....	Treasurer





MUSIC





## MIXED CHORUS



The mixed chorus has been an outstanding organization for many years at St. Petersburg - Richland High School. It has progressed rapidly and the newly trained tenors have accomplished a great deal. The Spring Concert which is held annually shows them at their best.

The Mixed Chorus owes a great deal of credit to Mrs. McGinnis for her assistance and direction. Also to Donna Burrell and Nancy Ashbaugh, the two accompanists.

They have had many gay times at the parties which have been held after the concerts.

To the Mixed Chorus of '53 we wish many great singers and many wonderful times.





#### GIRLS' CHORUS

Front row, left to right: Donna Burrell, Philomena Novak, Peg Foust, Mary Shreffler, Joyce Watson, Dolores Watson, Helen Linemen, Alice Whitmer, Nancy Brown, Ida Jackson, Mildred Harnish, Cleda Greenawalt.

Second row, left to right: Mrs. McGinnis, teacher; Betty Bartow, Kay Neely, Barbara Yingling, Shyrli Kribbs, Shirley Bunch, Peg Linnon, Dolores Bunch, Doris Raybuck, Nancy Ashbaugh, Jo Elaine Kribbs, Thelma Creese, Betty Matthews, Mary Eckman

Third row, left to right: Willa Linamen, Anna Mae Drozda, Charlotte Linamen, Shirley Parker, Donna Best, Betty Hanst, Charlotte Neely, Shirley Shanner, Nancy Heckathorne, Kay Klingler, Marilyn Foust, Shirley Edinger.

Fourth row, left to right: Joanne Spirnock, Lona Bowmen, Helen McHenry, Shirley Wetzel.

#### BOYS' CHORUS

First row, left to right: Grant Crawford, Dick McKinney, Jack Lowers, Tom Page, Bob Hutchison, Charles DeLoe, John Novak, Robert Ketner.

Second row, left to right: Dwight Koos, David McQuiston, John Schaefer, Jim Herzel, Alec Robertson, Ed Chadman, Dick Sherman, Ernest Koos, Bill Black, Steven Crawford, Mrs. McGinnis, teacher.

Third row, left to right: Merle Miller, John Preston, Andy Chechak, Forest Jackson, Rowland Fox, Tom McElhattan, John Edwards, Bill Logue.



## TRIO

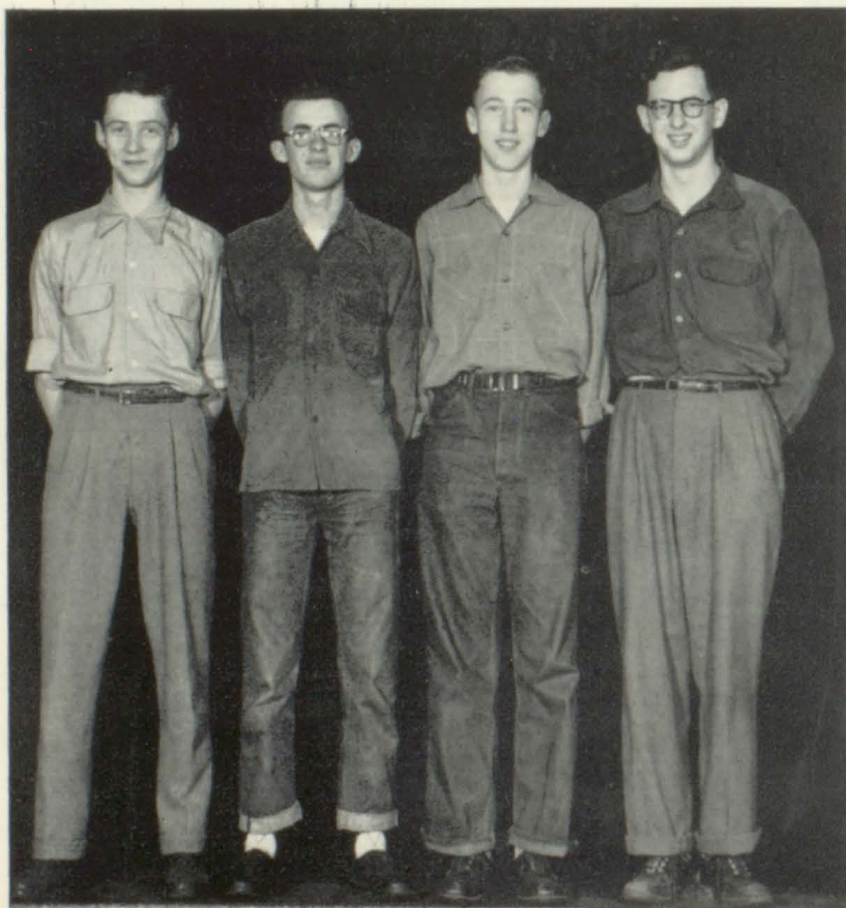
This ambitious group is composed of two seniors and one sophomore. They have had a very busy and successful year.

They entered the for-  
ensic at Clarion, where  
they took first place en-  
titled them to enter the  
state finals held at Har-  
risburg. Here they were  
also given a high rating.



DONNA, IDA, HELEN

## BOYS' QUARTET



BUD, TOM, DAVID, ALEC

A great deal of their  
time was taken up enter-  
taining various organiza-  
tions. They also sang for  
the concert, Commence-  
ment, and Baccalaureate.

Helen's fine alto voice  
and Ida's fine second so-  
prano voice are going to  
be missed a great deal  
next year. We wish the  
trio of '52 fine singing.



# OPERETTA

A tribe of gypsies is encamped near a magnificent estate belonging to a Mr. and Mrs. Valentine. They are parents of a baby girl named Rose. Young Mrs. Valentine is fascinated by the colorful gypsies and invites the young gypsy queen into her home. She also has a daughter named Rose. Mrs. Valentine and Queen Malena become friends. One day when Mrs. Valentine is absent, the Queen calls, bringing her own little girl. Seized with a sudden and fiendish idea, the gypsy woman changes the clothes of the infants and places her own child in the baby carriage of the wealthy Rose. The Queen knows her tribe will return every year, and that she can observe her daughter amid splendor and luxury.

And so the years pass! Mrs. Valentine, now widowed, cannot understand "her daughter." She is as wild as a deer, and amid the confines of society, she is like a bird in a gilded cage.

On the other hand, the real Rose Valentine, being reared as Rose Malena, shows every indication of being a "lady" and quite out of place in her gypsy environment.

Complications ensue when the supposed Rose Valentine falls in love with Gypsy Joe, a handsome young man of his race. And the supposed Gypsy Rose is in love with young, wealthy Norman Stafford, whose mother intends him to be the husband of the supposed Rose Valentine. Queen Malena does not want her own daughter, the supposed Rose Valentine, to wed a gypsy man, even though she knows the situation.

So, taking advantage of an old tribal law and custom, the Queen announces that she will marry Gypsy Joe, even though he is years her junior. This causes great consternation, Joe being especially unhappy about the Queen's decision. To prevent this, Joe elopes with the supposed Rose Valentine.

In a thrilling climax, Queen Malena admits the awful thing she did many years ago. The real Rose Valentine is restored to her rightful estate, and the real Rose Malena will henceforth live the life she deserves by right of birth.

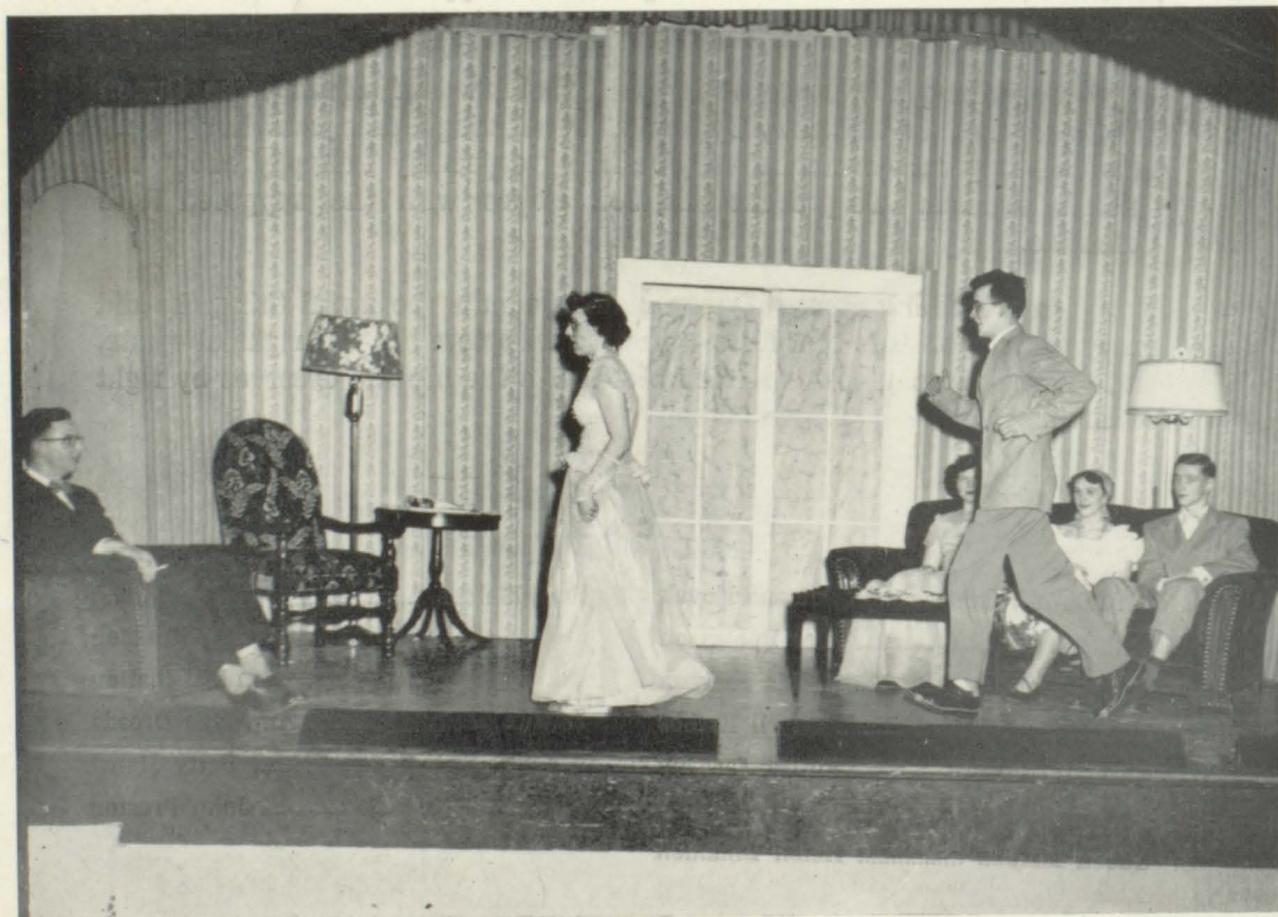
## CAST

Mrs. Dora Valentine ....	Philomena Novak	Rose Malena .....	Peggy Linnon
Luther Valentine .....	Alec Robertson	Joe .....	David McQuiston
Rose Valentine .....	Ida Jackson	Theodore Willingham ..	Tom McElhattan
Mrs. Nella Stafford .....	Shyrli Kribbs	Lenore Hastings .....	Ann Mae Drozda
Norman Stafford .....	Forest Jackson	Gladys .....	Betty Hanst
Brenda Stafford .....	Betty Bartow	Keene .....	John Preston
Queen Malena .....	Helen Linamen		





OPERETTA CAST



LENORE! LENORE!





### BAND

First row, left to right: Hazel Morgan, Peggy Linnon, Betty Bartow, Marilyn Foust, Kenny Shoup, Sonja Master, Forest Jackson, Judy McElhattan, Bradley Dunkle, Billy Vensel.

Second row, left to right: Dwight Koos, Ernest Koos, Mary Jane Edinger, Philomena Novak, Maxine Texter, Tommy Liebrum, Bob Shoup, David Yingling, Justine Linamen, Judy Lieberum, John Schaefer, Dick Jordan, Director, Fred Colonna.

Third row, left to right: Chester Wolf, Karen Murray, Mark Fichte, Nancy Vasey, Valerie Graff, John Summerville, David McQuiston, Shirley Edinger, Nancy Ashbaugh, Willa Linamen, Ida Jackson, Alec Robertson.

### ORCHESTRA

First Row, left to right: Nancy Ashbaugh, Ida Jackson, Maxine Texter, Dwight Koos, Peggy Linnon, Philomena Novak, Betty Bartow, Judy Liebrum, Justine Linamen, David Yingling, Bradley Dunkle.

Second row, left to right: Valerie Graff, John Summerville.



## BAND

Our energetic band made up of 36 members, and directed by Mr. Fred Colonna had a full schedule this year.

Peg Linnon represented our band at District Band held at Knox where she took third chair.

The band entered the forensic at Clarion where it was given an excellent rating. Several members represented our band in County Band. The members of the band also enjoyed a picnic and a concert along with other bands of the county at Cook Forest. The last event for the band was the Memorial Day Parade.

Next year the band will be diminished by five, but we are sure that the band with such a fine director will do equally as well as the bands of previous years.

### DIRECTOR

Mr. Fred Colonna

#### VIOLINS

Ida Jackson  
Dwight Koos  
Maxine Texter

#### CLARINETS

Peg Linnon  
Philomena Novak  
Betty Bartow  
Mary Jane Edinger  
Marilyn Foust  
Maxine Texter  
Hazel Morgan  
Alice Mae Perkins

#### CORNETS

Bradley Dunkle  
David Yingling  
Justine Linamen  
Bud Jackson  
Bill Vensel  
Judy McElhattan  
Judy Liebrum

#### SAXAPHONES

Johnny Summerville  
Valerie Graff  
Lynda Koos  
Mark Fichte  
Nancy Vasey  
Karen Murray

#### ALTOS

Bob Shoup  
Tommy Liebrum  
Roger Herzel  
Ken Hunsberger

#### TROMBONES

Ida Jackson  
David McQuiston  
Shirley Edinger  
Nancy Ashbaugh  
Willa Linamen

#### BARITONES

Sonja Master  
Kenny Shoup

#### BASS

Alec Robertson

#### DRUMS

Ernie Koos

#### BASS DRUM

Dick Jordon

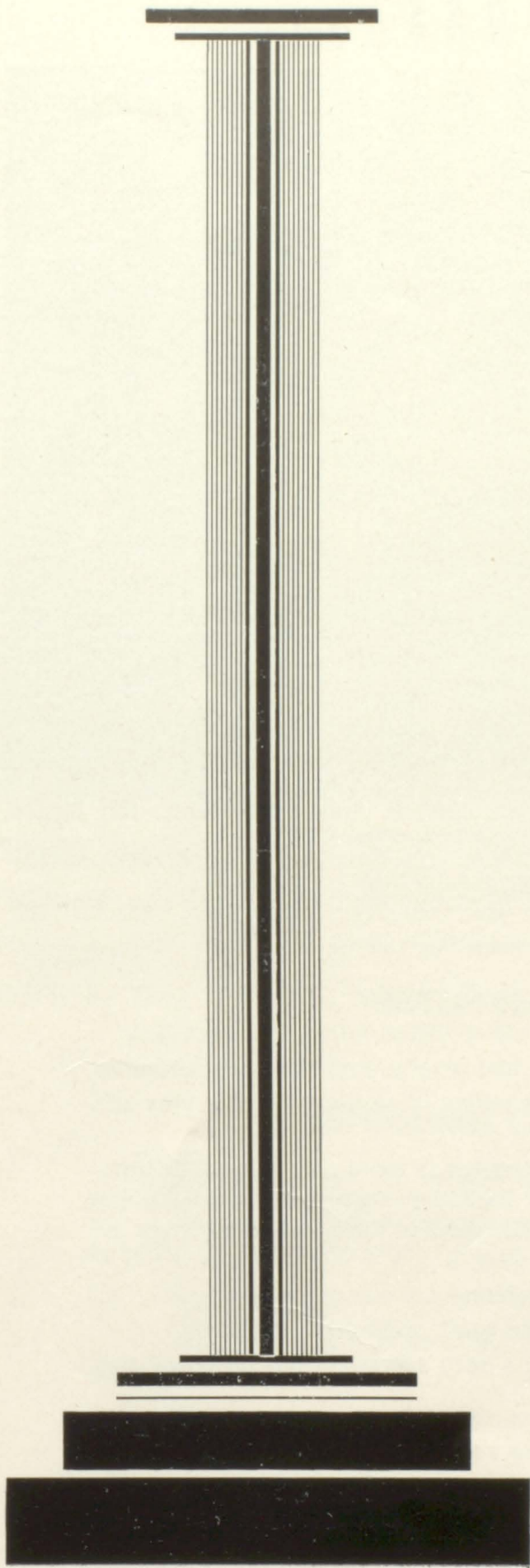
#### CYMBALS

John Schaefer  
Dwight Koos  
Gary Liebrum

#### PIANO

Nancy Ashbaugh





UNDER  
CLASSMEN





# JUNIORS



First row, left to right: Mildred Harnish, Shirley Bunch, Charlotte Neely, Betty Hanst, Ray Switzer, Teacher; Anna Mae Drozda, Doris Raybuck, Shirley Shaner, Joyce Watson.  
 Second row, left to right: Marilyn Foust, Shirley Edinger, John Schaefer, Alec Robertson, Edward Chadman, Dick Shoup, Ernest Koos, Shirley Jordan, Joan Spirnock.  
 Third row, left to right: Andy Chechak, Tom Page, Bill Creese, Don Lowers, Dwight Koos, Ron Fleming, Rowland Fox, Dick Jordon.  
 Fourth row, left to right: Bradley Dunkle, Ron Ashbaugh, Jim Couchenour.

## JUNIOR CLASS HISTORY

This happy go lucky crew consists of fifteen boys and eleven girls.

Throughout the year they have had several class functions including:

A skating party at Hilltop; the selling of stationery and a very successful square dance.

This class is not to be under estimated in extra curricular activities—two of our boys played on the Varsity basketball team, three played Junior Varsity, and sub Varsity. Both the manager and the assistant manager are from the class.

Three of the girls were cheerleaders.

Several of the group were in the band, orchestra and chorus.

They climaxed their year with a very successful Junior-Senior Banquet and Prom.

## CLASS OFFICERS

PRESIDENT .....	ALEC ROBERTSON
VICE PRESIDENT .....	JIM COUCHENOUR
SECRETARY .....	SHIRLEY SHANER
TREASURER .....	MILDRED HARNISH



## SOPHOMORES



First row: left to right: Donna Burrell, Nancy Heckathorne, Dolores Watson, Mary McGinnis, Mrs. Hel-  
mintoller, Teacher; Betty Matthews, Mary Eckman, Alice Whitmore, Mary Shreffler.

Second row: Jim Barlett, Ralph Logue, Charlotte Linamen, Shirley Wetzel, Helen McHenry, Lona  
Bowman, John Preston, Kenneth Lemon, Jack Lowers.

Third row: Homer Ditty, Terry Nevel, Dick McKinney, David McQuiston, Dick Konkle, John Edwards,  
Stephen Crawford, Robert Shoup.

Fourth row: Darwin White, Blake Neely, Bill Black, Ronald Hunsberger.

## SOPHOMORE CLASS HISTORY

The Sophomore Class consists of fifteen boys and fourteen girls.

They had several activities during the year including a very success-  
ful raffle, two skating parties, a Halloween party, and three candy sales.

They also furnished five basket ball players and two cheerleaders.

The Class is also represented by two members in the band and  
orchestra.

### CLASS OFFICERS

PRESIDENT .....	TERRY NEVEL
VICE PRESIDENT .....	DONNA BURRELL
SECRETARY .....	ROBERT SHOUP
TREASURER .....	DICK KONKLE



## FRESHMEN



First row, left to right: Cleda Greenawalt, Nancy Brown, Carolyn Rogge, Kay Neely; Teacher, Miss Porter, Nancy Ashbaugh, Barbara Yingling, Maxine Texer, Peggy Foust.

Second row: Jo-Elaine Kribbs, Thelma Creese, Willa Linamen, Joan Edwards, Norma Fleming, Phyllis Klingler, June Sherman, Hazel Hunsberger.

Third row: Robert Craig, Charles DeLoe, Grant Crawford, Ned Whitling, Wilbur VanZandt, Raymond Spirnock, Arthur Bell, Robert Hutchison.

Fourth row: John Novak, Merle Miller, Bill Shreffler, Bill Logue, Bob Ketner, Mike Chechak.

## FRESHMAN CLASS HISTORY

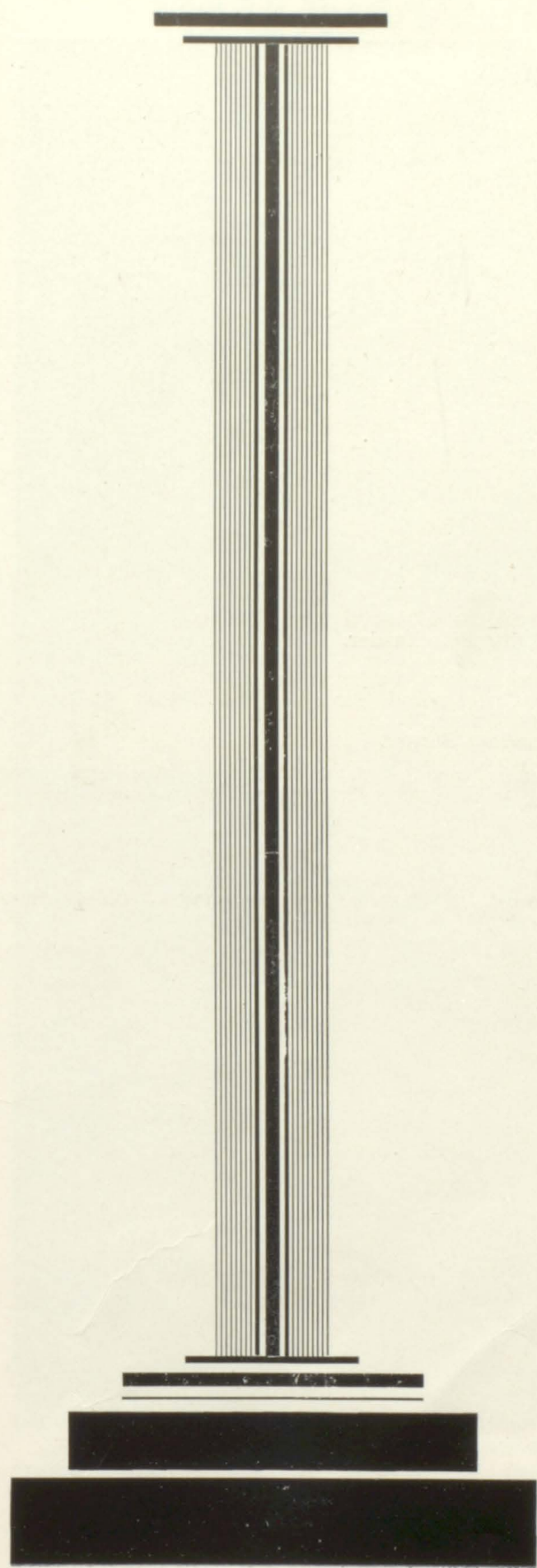
This class of fourteen boys and fourteen girls entered the halls of St. Petersburg High School on September 4, 1951.

They had two skating parties, a bake sale and candy sales which were all successful. They also contributed three members to the band and orchestra. Five of the J. V. cheerleaders: Barb Yingling, Kay Neely, Cleda Greenawalt and Nancy Ashbaugh were also from their class.

### CLASS OFFICERS

PRESIDENT .....	ARTHUR BELL
VICE PRESIDENT .....	GRANT CRAWFORD
SECRETARY .....	NANCY ASHBAUGH
TREASURER .....	KAY NEELY





GRADES





## SIXTH, SEVENTH AND EIGHTH GRADES



### SIXTH AND SEVENTH GRADE

First row, left to right: Janice Ditty, Dorothy Shreffler, Judy Liebrum, Lynne Winans, Mrs. Potts, Vivian Rogge, Eleanor Sullivan, Catherine Rupert, Josephine Lander.

Second row, left to right: Sonja Master, Martha McKaern, Joy Lander, Margaret McKaern, Patricia McNany, Judy McElhatten, Audene Wile, Barbara Blair, Marlene Wetzel, Susan Lemon, Johanna Smith.

Third row, left to right: Leroy Burrell, Joe Wingard, Carl Jackson, David Rogge, Clifford Shreffler, John Summerville, Carlos Klingler, John Deloe, Daryl Watson.

Fourth row, left to right: Roger Herzl, Bernie Parker, Gary Bartow.



### SEVENTH AND EIGHTH GRADE

First row, left to right: Peggy Ditty, Mary Jane Edinger, Valerie Graff, Lynda Koos, Mrs. Fillman, Justine Linamen, Melvene Creese, Alice Hoovler, Patty Clark.

Second row, left to right: Marion Parker, John Goodhue, David Yingling, Marie Hilliard, Georgia Nevel, Doris Best, Nancy Ketner, Kenneth Shoup, Jeffery Crawford, Donald Dunmire.

Third row, left to right: Johnnie Wood, Paul Gravier, Janis Flick, William Sherman, Dick Dunmire, Richard, Beichner, Bill Burrell, James Edwards.

Fourth row, left to right: Kenneth Hunsberger, Robert Flick, Larry Ashbaugh.



## THIRD, FOURTH AND FIFTH GRADES



### THIRD GRADE

First row, left to right: Nancy Smith, Betty Johnson, Gwendolyn Jordan, Barbara McNany, Mrs. Earle, Patty Texter, Marilyn Milford, Margaret Sullivan, Susan White.

Second row, left to right: Larry Shreffler, George Black, Charles Blair, Gary Dee, Francine White, Gloria Hoovler, Bertha Deloe, John Libecco, Walter McElroy, Lennord Shoup, Robert Konkle.

Third Row, left to right: Gary Ashabugh, George Edinger, Terry Ashbaugh, Douglas Vensel, Ronald Shoup, Lennis Berlin, Gary Liebrum, Dennis Dotter, Sammy Eakman.

### FOURTH AND FIFTH GRADES

First row, left to right: Sarah Wingard, Joyan Morgan, Beverly Parker, Helen Sherman, Ressie Heeter, Beverly Milford, Alice Perkins, Janice Landers, Barbara Clark.

Second row, left to right: Karen Murray, Sandra Neely, Rebecca Ryberg, Nancy Vasey, Myrtle Lowers, Donna Watson, Linda Master, Frances Black, Carol Creese, Linda Cotton.

Third row, left to right: Stanley Chadman, Larry Goodhue, Lloyd Johnson, John Hunsberger, William Barlett, Chester Wolff, Francis Sullivan, Thomas Liebrum.

Fourth row, left to right: Mark Fichte, William Vensel, Walter White, Richard Sullivan, Stanley Fillgrove, Richard Ashbaugh, William Eakman.



## FIRST AND SECOND GRADES



### FIRST GRADE

First row, left to right: Beverley Linamen, Gloria Deloe, Janet Johnson, Mary Jane Sullivan, Vicke Burrell, Miss Hale, Teacher; Judy Plunkard, Barbara McElroy, Karen Sue Guntrum, Connie Clark, Barbara Nevel.

Second row, left to right: Bonnie Dittman, Barbara Wingard, George Madrigal, Eugene Grantz, Jack Manning, Margaret Grantz, Ruby Dittman, Janice Linamen.

Third Row, left to right: Dennis Shreffler, Robert Eakman, William Schacht, Daniel Fichte, Kenneth Wetzell, Ronald Shoup, Leslie Whitling, Bennie Landers, Ronald Sherman, Frank Dittman, Ken Magee.

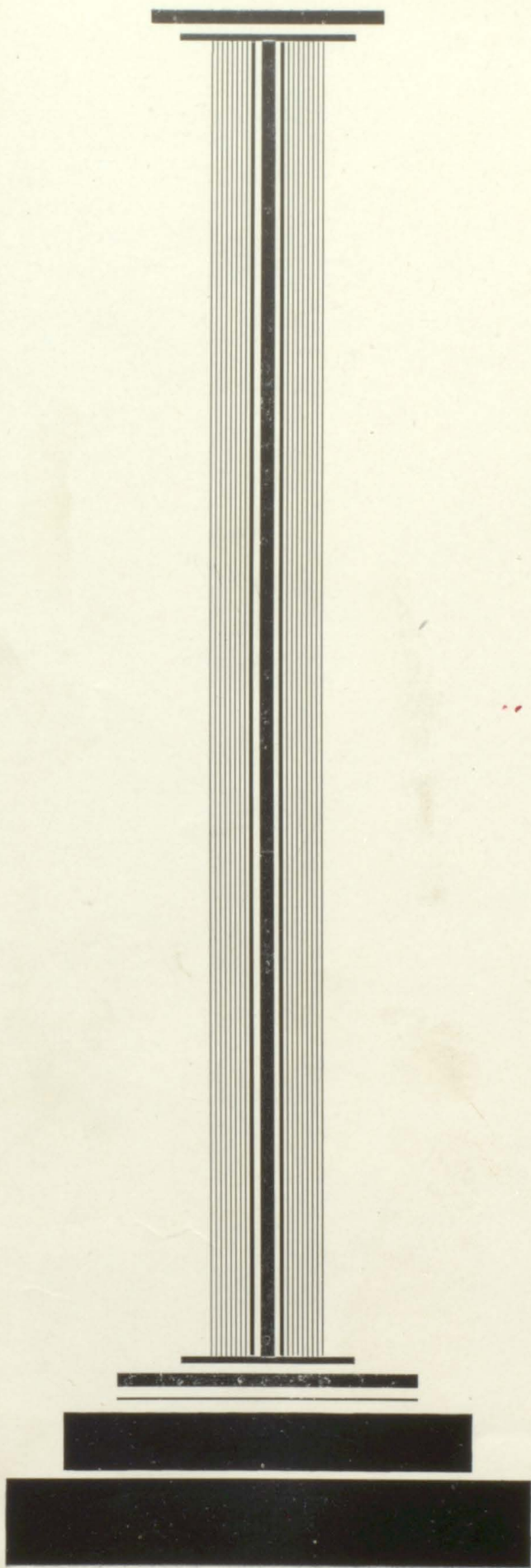
### SECOND GRADE

Front row, left to right: Wiley Master, Charles Hoovler, Eugene Hiles, Freddie Clark, Billy Wray.

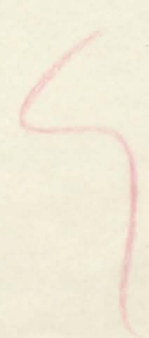
Second row, left to right: Dewayne Deloe, Jack Dittman, Donald Wolf, Jerry Hiles, John Dittman, Ronald Eckelberger, Jimmy Van Zandt, Larry Whitling, Sonny Lebecco.

Third row, left to right: Sara Morgan, Susan McCormick, Sandra Simpson, Shirley Linamen, Patty Rupert, Velma McKinney, Cleora Johnson, Effie Ditty.





SPORTS





# Clarion Co. Champs





## **RAY SWITZER, Coach**

Ray Switzer did a magnificent job of coaching this season. Although this is Ray's first year of coaching, he showed no love toward any team in the county. After winning the county championship, Ray was elected coach of the Class "C" All Star team, but due to a play off game on the same night, he was unable to be present. We are certain he will have many more championship teams.

### **DICK JORDAN, Manager**

Dick, a hard working Junior, did a fine job this year taking care of the equipment. He will be missed next year.

### **ROWLAND FOX, Assistant Manager**

Foxy, another behind the scenes man, did a very good job this year. Next year he will move up to the very important job as manager.

### **TOM LEAVY, Guard, Co-Captain**

Tom, the set shot artist of the entire county, really played excellent basketball during the past four years. He was one of the few players of the school to earn four varsity letters besides playing on two championship teams. During his final year as Co-Captain, Tom lead the team in scoring and was a good defense threat. He was chosen to play in the annual All-Star game at Clarion. It will certainly take a star to fill his shoes in the future. Nice going, Tom!

### **BILL COUCHENOUR, Forward, Co-Captain**

This scrappy forward came to us from Mapletown last year and proved to be a very valuable player. His smart defensive work along with his excellent shooting ability earned him the job of co-captain during his final year in school. He was one of the two players selected to represent his school in the All-Star game at Clarion. His all-round-play will sorely be missed next year. Good luck, Bill in whatever you do!

### **ALEX ROBERTSON, Center**

Alex is a Junior and a member of the first five. Alex, a good center and rebounder, has shown some excellent ability this year. Alex has a good pivot shot and ability to shoot it with either hand. He will be back to help the team next year. Good luck Alec.

### **ERNIE KOOS, Forward**

Although Ernie is only a Junior this year he played on two championship teams. Ernie, a fast moving forward, is said to be one of the best rebounders in the county. He is very good at taking rebounds off the boards and putting them in. Our next year's team depends a lot on Ernie. Keep up the good work, Ernie!

### **BUD JACKSON, Guard**

Bud, a Senior, proved very valuable in all our games this year in both offense and defense. He was selected to represent our school in the Clarion College gymnasium. He has completed three years of good basketball. Good luck, Bud!

### **KEN KING, Guard**

Ken, a Senior, has been a member of the basketball team for the past four years participating in both varsity and junior varsity games. His one hand shot from around the foul line was deadly. He sank two of these shots in the Knox game to put the Saints in the lead. His all around ability will be missed in the future. Good luck, Ken!

### **HOMER NEVEL, Forward**

Homer, a senior and a first year man for the Saints, deserves a lot of credit for sticking with the team, although he did not see much action. He provided needed strength when the chips were down in many of our games this year. The team next year could use his height and ability. Nice going, Homer.

### **DICK WATTS, Forward**

Although Dick is a senior, he has only played one year and looked very good. Dick, a great scrapper and a good defensive man, was also a good jump shot. The coach put Dick in with confidence in many a close game. Nice going, Dick!





#### **VARSITY TEAM**

First row, left to right: Dick Jordan, Homer Nevel, Rowland Fox.  
 Second row, left to right: Ken King, Bill Couchenour, Ernie Koos, Alex Robertson, Tom Leavy, Bud Jackson, Richard Watts, Mr. Switzer.



#### **JUNIOR VARSITY TEAM**

First row, left to right: Dick McKinney, Tom Page, David McQuiston, John Preston, John Schaefer, Mr. Switzer.  
 Second row, left to right: Ralph Logue, Jack Lowers, Rowland Fox, Ron Ashbaugh, Terry Nevel.



## HOW THEY CAME OUT



### SAINTS 39

### PARKER 31

Under tutorage of Mr. Raymond Switzer, the Saints got off to an excellent start by defeating the Parker team on the home floor by the score of 39-31. Because of the Saints' good showing, home town patrons looked forward to another wonderful team.

### SAINTS 40

### PARKER 37

Victory number two fell in the path of the Saints on Parker's home court. Koos and Witherup paced their respective teams with 16 and 13 points.

### SAINTS 59

### EMLENTON 37

Breaking four men into the double figure scoring column, the Saints won their third consecutive game, downing the Emlenton Hornets 59-37 on the home hardwood.

### CLARION 49

### SAINTS 34

The Bobcats from Clarion handed the home team their first defeat by the score 49-34. A disastrous second quarter was a big factor in the defeat.

### SAINTS 41

### EMLENTON 28

Breaking back into the victory column, the Saints traveled to Emlenton and took their second victory from the Hornets 41-28. This made our record four wins, one defeat.

### SLIGO 40

### SAINTS 36

Inability to stop Erickson, Sligo ace, cost the Saints their second loss and their first loss to league competition. The final tally was 40-36. Leavy and Koos led the Saints' scoring with 12 each.

### SAINTS 69

### SALEM 35

Using nine men the Saints took their fifth straight league victory from an unexperienced Salem team by a 69-35 score. Koos and Leavy paced the Saints with 23 and 19 points respectively.

### SLIGO 43

### SAINTS 39

For the second straight time Sligo defeated the Saints by four points 43-39. Erickson again was the big scorer for Sligo with 19 points. This was our fourth setback and second league loss.



**SAINTS 44****FARMINGTON 28**

Jumping off to an early first half lead, the Saints racked up league victory number six as they downed the aggressive Wolves 44-28. Alec Robertson was high point man for the night with 11 counts.

**ASHLAND 53****SAINTS 47**

In a very exciting and high scoring ball game the "Whiz Kids" of Ashland handed the Saints their third league loss by a 53-47 tally. Remarkable sharpshooting by Ashland overshadowed the efforts of Couchenour and Leavy who garnered 14 and 12 points respectively.

**SAINTS 67****SHIPPENVILLE 35**

Playing probably their most inspired game of the season the team racked up their seventh league victory by the amazing score of 67-35 over Shippenville. Five of the seven players for the Saints entered the double figures with Koos leading the way with 20 markers. In their encounter with the taller Wolves, a pressing man for man spelled victory for the rampaging Saints.

**SAINTS 24****FARMINGTON 22**

Rallying in the second half the Saints won victory number five and also league victory number one. This one was a close 24-22 over the aroused Wolves from Farmington.

**SAINTS 57****ASHLAND 33**

Led by Ernie Koos who tallied 22 points, the Saints won over Ashland for their second league victory by a 57-33 tally. Koos showed amazing shooting as he hit for 11 out of 14 field goal tries. The "Whiz Kids" from Ashland showed a lot of spirit but a good first quarter by the home team showed way for the victory.

**SAINTS 42****SHIPPENVILLE 39**

In their first real league test, the Saints downed a taller and more experienced Shippenville team by a 42-39 score. Leavy and Couchenour led the Saints with 13 and 10 points respectively.

**SAINTS 39****KNOX 35**

Rallying late in the fourth quarter, the Saints pulled their third league victory out of the fire from Knox by a 39-35 score on the Knox hardcourt. Although the points were distributed among all six Saints, King provided the victory spark with two quick field goals in the fourth quarter.

**CLARION-LIMESTONE 44****SAINTS 41**

A late rally fell short as the Lions from Limestone handed the Saints their third setback, 44-41. Tom Leavy put on a great scoring show as he tallied 23 points from his front court position.

**SAINTS 51****KNOX 47**

Playing before a capacity crowd the Saints took the shine off the Knox Bottlemakers by the count of 51-47. This brought our eighth league victory and put us in front of the Class "C" row. A fourth quarter rally by Knox fell short, but it had many spectators more than a little upset. Couchenour and Jackson led the Saints in victory as each garnered 16 points.

**SAINTS 47****SALEM 45**

With the Class "C" title in sight, the pressure was really on for this one. The Wolves from Salem had upset in their minds, but the Saints came out on the long side of the ledger 47-45. For the second year in succession, the Saints earned the right to represent Clarion County in District playoffs.

**CLARION 65****SAINTS 46**

For the second time the Saints found the Bobcats of the Clarion team tough. The rivals won by the count of 65-46. Couchenour paced the Saints attack with 11 points.

**District (9) Playoff at Brookville****SAINTS 45****SYKESVILLE 33**

The home town boys completely upset the heavily favored Bulldogs from Sykesville by a 45-33 score. Couchenour, Robertson, and Leavy accounted for 35 markers among them. This victory put the Saints in the District 9 Finals, a position which no other Class "C" team from Clarion County can boast.

**District (9) Playoff Finals at Brookville****COUDERSPORT 61****SAINTS 33**

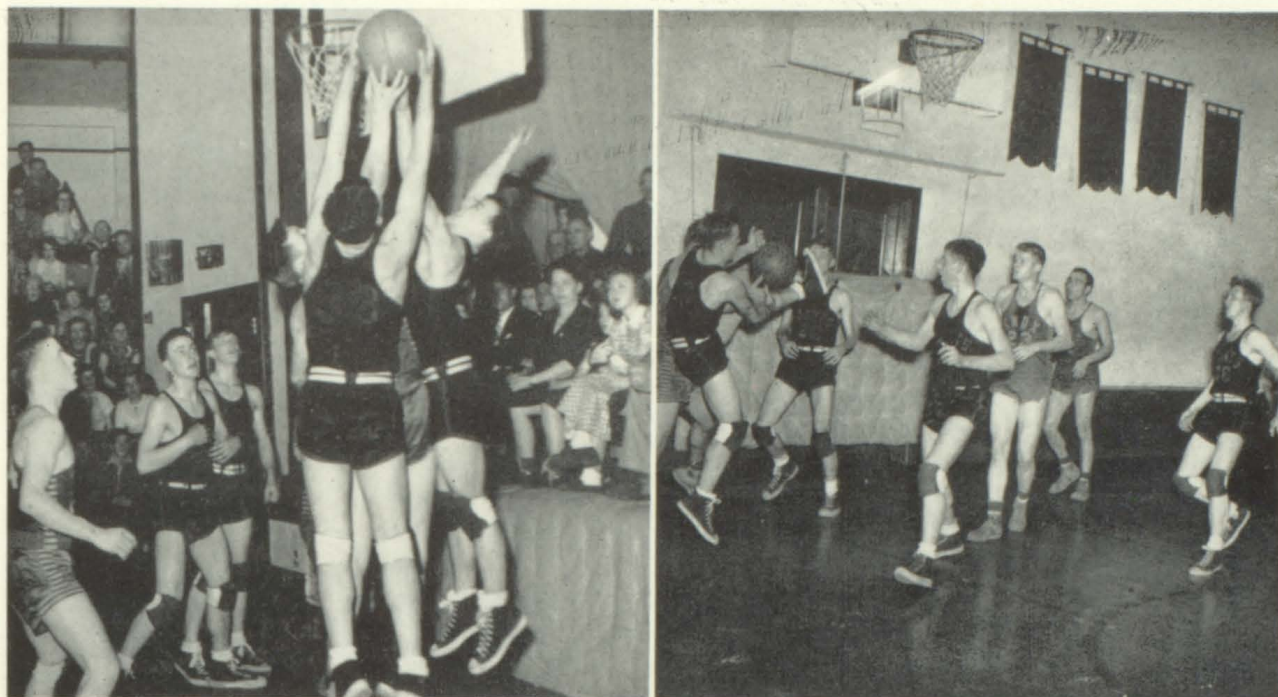
Playing under a great height handicap, the Saints put up a good showing before mowing out of the state competition 61-33 to a great Coudersport team. Losing this game was no disgrace for Coudersport advanced to the state final before being beaten, thus making them the second best "C" basketball team in Pennsylvania.

**Clarion County Mythical Championship Playoff  
At Clarion State Teachers College****SAINTS 32****EAST BRADY 28**

For the first time in St. Petersburg history, the home town team beat a team from East Brady and by doing so became the Mythical Clarion County Champs. The Bulldogs, Class "B" Champs had won 10 consecutive togas. This was our revenge for defeat at their hands last year in this identical kind of playoff. Bill Couchenour, diminutive forward led the scoring with 12 points as the Saints closed out their second consecutive successful season with a 32-28 victory.



## ACTION SHOTS



1951-1952

## Clarion County Class "C" Basketball League Standings

### FINAL STANDINGS

TEAM	Won	Lost	P'ct
**St. Petersburg .....	9	3	.750
Knox .....	8	4	.666
Sligo .....	7	5	.583
Ashland .....	6	6	.500
Shippenville .....	6	6	.500
Farmington .....	5	7	.417
Salem .....	1	11	.083

\*\*Champions



## CHEERLEADERS



### VARSITY CHEERLEADERS

A squad consisting of three seniors and three junior girls make up the varsity cheerleaders. The girls were always there cheering for our team.

Participating were: Betty Bartow, Ida Jackson, Peg Linnon, Anna Mae Drozda, Shirley Edinger, and Doris Raybuck.

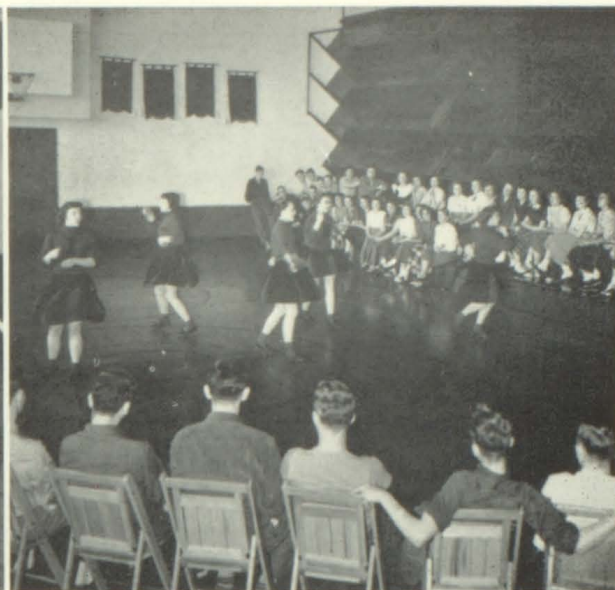
The letters on the sweaters spelling "Saints" added a great deal of attraction.

### JUNIOR VARSITY CHEERLEADERS

The Junior Varsity Cheerleaders were composed of a group of six cheerleaders. There were four freshmen: Kay Neely, Cleda Greenawalt, Nancy Ashbaugh, Barbara Yingling, and two sophomores: Mary Ellen Shreffler and Donna Burrell.

The Junior Varsity Cheerleaders' good response was a great help to our Junior Varsity team's success.





T E - - A M

WE GOT PEP



That Chlorodent Smile

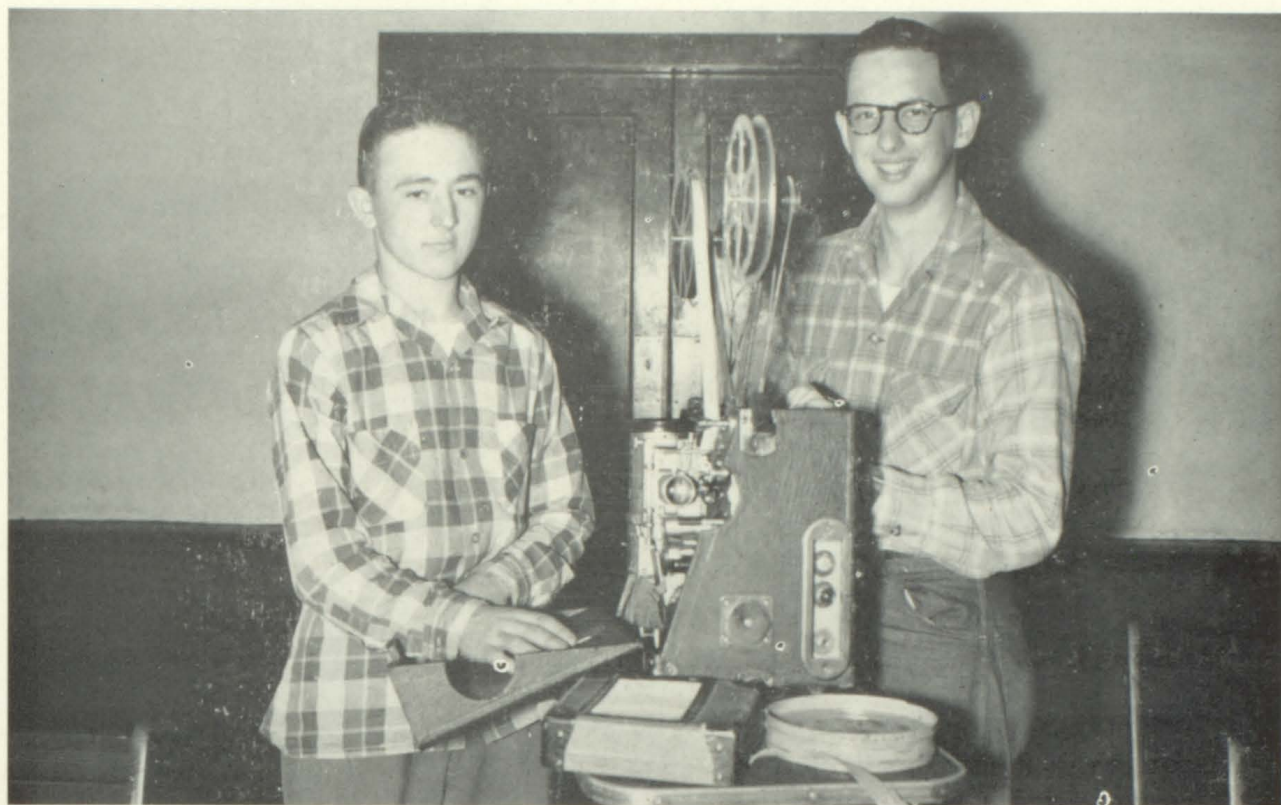


## BASKET BALL BANQUET





## FAITHFUL HELPERS



Alex and Dick, the two boys whom everyone in high school enjoys to see work, especially if it is setting up their projector in the second or third period for a forty-five minute movie.



The Librarians, who worked faithfully on the books all year to keep them in shape for the rest of the high school, deserve a lot of credit.



# YEAR BOOK STAFF



## Editor-in-Chief

Ken King

## Ass't Editors-in-Chief

Betty Bartow  
Ida Jackson

## Sports

\*Bud Jackson  
Dick Watts  
Don Myers

## Music

\*Pauline DeLoe  
Philomena Novak  
Kay Klingler

## Editorials

\*Ida Jackson  
Shyrli Kribbs

## Class History

\*Helen Linamen  
Betty Bartow

## Class Will

\*Jim Herzel  
Tom McElhattan  
Homer Nevel

## Art Committee

\*Homer Nevel  
James Ashbaugh  
Shyrli Kribbs

## Picture Committee

\*Bud Jackson  
Ken King  
Dick Sherman

## Class Prophecy

\*Donna Best  
Ida Jackson  
Peg Linnon  
Shyrli Kribbs

## Faculty History

\*Tom Leavy  
Bill Couchenour  
Don Myers  
Bud Jackson

## Advertising Committee

\*Jim Sheely  
Ken King  
Ida Jackson  
Betty Bartow  
Donna Best  
Peggy Linnon  
Sis Novak  
Jim Ashbaugh  
Bud Jackson

## Dramatics

\*Delores Bunch  
Betty Bartow  
Helen Linamen  
Tom McElhattan

## Ways and Means

\*Dick Watts  
Jim Sheely  
Don Myers  
Bud Jackson

## Proof Readers

\*Kay Klingler  
Delores Bunch  
Philomena Novak  
Pauline DeLoe

## Publicity Committee

\*Tom Leavy  
Don Myers  
Bill Couchneour

## Sales and Publication

\*Shyrli Kribbs  
Delores Bunch  
James Ashbaugh  
Tom McElhattan  
Bud Jackson  
Dick Sherman

## Miscellaneous

\*Dick Sherman  
Bud Jackson  
Jim Sheely  
Don Myers  
Bill Couchneour  
Tom Leavy



**OUR  
GOOD LUCK**



**MASCOT**



# GRADUATES FROM THE ST. PETERSBURG - RICHLAND TOWNSHIP HIGH SCHOOL 1897 TO 1952

1897

S. R. CRAIG, Principal

Laura Craig  
Georgia Tulloch  
Rachel Collner  
John Bissell  
Carrie Moore  
Ethel Gates

Effie Shriver  
Margaret Soliday  
Frances Jackson  
Bert Shoup  
Welthy Elder  
Jessie Heeter

1904

G. G. WILSON, Principal

Carlos Klingler  
Ida Barger  
William Stewart  
Bernice Armour  
Edna Clark  
Raymond Neely  
Jennie Potts  
Elizabeth Moore  
Violet Neely  
Beatrice Toy

1898

S. R. CRAIG, Principal

Nettie Ashbaugh  
Pearl Fillman  
Grace Schell  
Pearl Conver  
Cora Davis  
Effie Neely  
Rena Dittman  
Jessie Ritts

1905

G. G. WILSON, Principal

Lottie Barger  
John Boocks  
Blanche Sheely  
Mary Gates  
Raymond Vensel  
Irene Baker  
Nina Latshaw  
Hallie Duve  
Rhoda Bell  
Irene Ritts  
Marion Wilson

1899

S. R. CRAIG, Principal

Pearl Matthews  
Sadie Clark  
Anna Belle Bortz  
Della Bissell  
Esma Foust  
Effie Buck  
Grace Ashbaugh  
Warren Myers  
May Klingler  
Lucy Allen

1906 did not have a graduating class.

1900

M. M. RODGERS, Principal

Ruth Armour  
Ada Bostaph  
Cora Dittman  
Myrtle Hutchison  
Lydia Latshaw  
Irene Neely  
Fred Neely  
Verne Shoup  
Arthur Smith  
Claude Slicker  
Anna Kirschner

1907

E. E. BROWN, Principal

Sara Best  
Willis Dittman  
Norman Jackson  
Beneta Griffin  
Will Best  
Louise Jones  
Lillian Hagan

1901

M. M. RODGERS, Principal

Ford Summerville  
Bess Craig  
Irene Kirschner  
Zoe Schell  
Lester Neely  
Birdie Edinger  
Clarence Neely

1908

E. E. BROWN, Principal

Harrison Wellman  
Anna Brosnan  
Beulah Will  
Lester Cope  
Ernest Slicker  
Marjorie Edinger

1902

J. M. MYERS, Principal

Mae Foust  
Orpha Slicker  
Flo Bissell

1909

W. C. TERWILLIGER, Principal

Lester Neely  
Wearne Beals

1910

W. C. TERWILLIGER, Principal

Harry Toy  
Margaret Potts  
Ebner Master  
Susie Jones  
Samuel Uncapher  
Marguerite Jones  
Lee Barlette  
Bess Barger

1903

G. G. WILSON, Principal

Mabel Ashbaugh  
Susie Gates  
Harry Jordan



1911

C. M. CHRISTLER, Principal  
Mary Best

1912

D. B. PETERSON, Principal  
Alma Master  
Ruth Toy  
Bessie Heeter  
Lucy Brosnan  
Grace Ritts  
Cecil Foust

1913

D. B. PETERSON, Principal  
Freda Keeler  
Elmer Texter  
Mary Logue  
David Tippery  
Levi Eaves  
Glenna Hagan  
Fred Fair

1914

D. B. PETERSON, Principal  
Eva Amsler  
Hilda Fillman  
Bess Cushing  
Mary Texter  
Roland Ramsey  
Cecil Peters  
Kimple Garis  
Florence Watson  
Henry Johnson  
Estella Shoup

1915

D. B. PETERSON, Principal  
Leonard Miller  
Bernice Amsler  
Ralph Cope  
Ethel Best  
Charles Master  
William Master  
Nellie Vasey  
Dorothy Nevel  
Mary Morgan  
Almeda Logue  
Bessie Jordan  
Garnet Jackson  
Rebecca Ramsey  
May Whitling

1916

D. B. PETERSON, Principal  
Philip Koos  
Bertha Amsler  
Ethel Kissinger  
Donald Summerville  
Joe Summerville  
Dewey Tippery  
Dwight Murray  
Ralph Freeman  
Christina McElhattan  
Ruth Amsler  
Mary Heeter  
Muriel Keeler  
Claude Rupert  
LeRoy Texter  
Minnie Bicehouse  
Catherine O'Brien  
Claire Levy  
Paul Toy

1917

MR. MOORE, Principal  
Mildred Hawn  
John Wetzell  
Violet Henry  
Fay Ashbaugh  
Luther Weichsel  
Albert O'Brien  
Ray Freeman  
Harry Cushing  
Lucinda Tippery  
Raymond Morgan  
Edward Ashbaugh  
Grace Logue  
Lester Kiser  
Leitha Kiser  
Sarah Shoup  
Clarence Fulmer

1918

R. L. HESSEN, Principal  
Mary Ashbaugh  
Alice Amsler  
Harrison Jones  
Leona Ritts  
Lucille Lawrence  
Llewellyn Nevel  
Jean Keeler  
William Shoup  
Amanda Jackson  
Meredith Kissinger  
Elizabeth Rupert  
Freeman Ashbaugh  
Ruth Logue  
Anna Toy  
Dorothy Jordan

1919

MR. GOLDEN, Principal  
Myrna Conver  
Crea Biery  
Ethelda Neely  
Charles Koos  
Donald Watson

1920

B. M. DAVIS, Principal  
John Altman  
Perry Lovell  
Emma Klingler  
Ralph Amsler  
Bessie Summerville  
Mildred Jones  
Leonard Thompson  
Florence Boyd  
Hazel Carroll  
Sue Breul

1921

J. H. KISER, Principal  
Sarah Cushing  
Isabel Jones  
Ruth Rebert  
Fred Amsler  
Paul Ashbaugh  
Nellie Levy  
Rachel Jordan  
Gladys Jones  
Grace Spindler  
Marjorie Shields  
Sarah Morgan



1922

J. H. KISER, Principal

Finley Bartow  
Robert Shoup  
Arthur Weicksel  
Florence Riddle  
Josephine Fleming

1923

J. H. KISER, Principal

May Altman  
Cuvier Berlin  
Mary Cushing  
Anna Dembeck  
Dorothy Goff  
Carl Lovell  
Myrna Master  
Howard McLaine  
Roy Nevel  
Nellie Russell  
Helen Shoup  
Martha Shoup  
Benjamin Wetzel

1924

M. I. FLOWER, Principal

John Robert Wallis  
Virginia E. Brown  
Audrey A. Bell  
Rachel E. Carroll  
Hazel I. Morgan  
Althea G. Heeter  
Helen E. Logue  
Ruth E. Nevel  
M. Marie Elliott

1925

M. I. FOWLER, Principal

Paul L. Amsler  
Aldine Ashbaugh  
Nedra R. Brown  
Clell D. Hovis  
M. Adalaide Harnish  
Earl W. Klingler  
Wilna Master  
R. Stanley Miller

1926

M. I. FOWLER, Principal

C. LeRoy Ashbaugh  
George Emery Mortimer  
Helen L. Ritts  
Ruth L. Morgan  
Katherine Purucker  
Elman Robert

1927

M. I. FOWLER, Principal

Irene Confer  
Mabel Bostaph  
Mildred Brown  
Chester Eddinger  
Martha Rupert

1928

M. I. FOWLER, Principal

Lena Carroll  
Robert S. Amsler  
Kenneth Fitzgerald  
Allen R. Kagle  
Agnes Price Boyd  
Evelyn Jackson  
Muriel Graff  
Samuel J. Edinger  
Helen M. Hanawalt

1929

MAURICE HEETER, Principal

Walter Jackson  
Helen Ashbaugh  
Arnold Hovis  
Kenneth Altman  
Blanche Best  
Eva Jackson  
J. C. Best  
Hilda Vensel  
Wilda Ketner

1930

This was the last class of the three year High School at St. Petersburg. It became part of the first graduating class from the new four year school built in 1930.

1931

E. H. DeVILDER, Principal

Arthur R. Ashbaugh  
Eugene Robert Best  
John C. Best  
Wilda Edith Best  
Velma Geraldine Best  
Emma Lucy Eddinger  
Mary Elizabeth Fleming  
Francis M. Heckathorn  
Madelin Mary Heeter  
Margaret Roseann Jackson  
Paul E. Klingensmith  
Gilbert A. Lofgren  
James LeRoy Lovell  
Thomas Patrick Murray  
Josephine Melaney  
Kenneth B. Moyer  
Gertrude Mirian Mullen  
Richard N. Raybuck  
Edward DuWayne Shoup  
James Richard Teitsworth  
Arthur W. Duwayne Toy  
Elgie M. Vanwormer  
Amy Willovine Gray  
Virginia Louise Watson  
Hilda Marie Vensel  
Eva Lucille Davis



1932

E. H. DeVILDER, Principal

Laura C. Amsler  
Frances M. Best  
Evelyn Ruth Best  
Russell R. Black  
Goldie M. Carroll  
Darius Ditty  
Ida M. Downing  
Adaline G. Ganoe  
Alerda Maree Gerlack  
John D. Graff  
Ethel R. Jackson  
Grace I. Klingensmith  
Zella Elmeda Jackson  
Hugh Leo Keating  
Alice S. Lofgren  
Ruth I. McFarland  
Florence Gertrude Munson  
Jean Panton  
Norma Vivian Passauer  
Carl A. Raybuck  
Paul E. Shoup  
Rea Jeanne Shoup  
Leland Emerson Ritts  
Robert B. Stubble  
Beatrice A. Sloan  
Evelyn Sweesy  
Pauline J. Vensel  
H. Eugene Watson  
Russell E. Weeter  
Ralph Alan Welton  
Jane E. White

1933

E. H. DeVILDER, Principal

Russell F. Ashbaugh  
Graydon Best Berlin  
Robert Lee Cook  
Donald C. Elliott  
Wilson Lewis Ginder  
Eugene Willard Miller  
Edward William Morgan  
Robert Meredith Rankin  
Louis William Shoup  
Jack Smith  
Mary Barbara Carroll  
Mary Helen Garris  
Vivian Charlotte Hurlbert  
Edythe Estelle Hovis  
Jeanne Kathryn Irwin  
Helen Cleona McFarland  
Helen Mae Pasauer  
Velma Viola Shoup  
Lois Marie Shoup  
Mary Genevieve Stubble  
Jean Margaret Vasey  
Zula Ruth Wentling

1934

E. H. DeVILDER, Principal

Dorothy Margaret Baldrige  
Paul W. Berlin  
Effie Roberta Carney  
Margaret Veda Cooper  
Anna Margaret Dunmire  
Cathryn Blanche Galena  
Geraldine Francis Garris  
Eileen Gallagher

Carlyle Charles Irwin, Jr.  
Grant W. Jackson  
Edward C. Lofgren  
Zelma Mae McMaster  
Martha Naomi Meals  
Chester Irving Munson  
Helen Marie Obey  
Esther Gladys Plunkard  
Mabel Mary Plunkard  
Helen Mae Shoup  
Anna Maude Stubble  
Erdene Marie Toy  
June Katherine Vasey  
William Wallace Vensel  
Nora Mae Weeter

1935

E. H. DeVILDER, Principal

Carl D. Ashbaugh  
Arline F. Beals  
Orville L. Black  
Carl James Best  
Hazel L. Carroll  
Alice Coursancey Carr  
John A. Defibaugh  
Genevieve Rebecca Galena  
James Ross Ganoe  
Hazel Viola Garris  
Mary Elizabeth Gates  
Ruth Rachel Gardner  
Leonard S. Heckathorn  
Annie Elizabeth Goughler  
Edward Gavin  
Lawrence E. Hulbert  
Walter A. Konkle  
Mary Louise Landis  
Lester George Lewis  
Jack Edward McGuirk  
Clyde S. McHenry  
Marvin LeRoy Myers  
Raymond A. Parks  
Otis G. Raybuck  
Marion VanWormer  
Herbert Lyle Watson

1936

E. H. DeVILDER, Principal

Paul Lowaine Altman  
Raymond Frederick Arendt  
Harlen Roy Ashbaugh  
Lawrence Clyde Botts  
Robert Harvey Bushey  
Wendell Eugene Francisco  
Walter Eugene Garris  
Helen Louise Grazier  
James Earl Gross  
Ruth Elnora Hale  
Levon Jackson  
Charles Stanley Jones  
Anna Porterfield Melaney  
Ella Rebecca Myers  
Evelyn Lorraine Panton  
Ida Armenta Raybuck  
Clara Anna Reed  
Leland DeWitt Shirey  
Elizabeth Jane Shoup  
Robert W. Toy  
Marcella Delores Vensel  
Mildred Mae Whitling



1937

E. H. DeVILDER, Principal

Edward Best  
Robert Roy Best  
Charles L. Fulmer  
William E. Garriss  
Harry A. Gross  
Walter E. Hahn  
Clemons H. Jackson  
Robert Bruce Jordan  
Sharon L. McHenry  
Kenneth McMaster  
Richard L. Neely  
William C. Ritts  
Richard M. Wellman  
Richard M. Ryberg  
Robert Shirey  
William A. Shoup  
Mary Leona Boyd  
Ruby Ellenberger  
Jean E. Garriss  
Mary Konkle  
Cleora McGuirk  
Jean Morgan  
Helen Myers  
Madelyn E. Vasey  
Naomi Jeannet Stubble

1938

E. H. DeVILDER, Principal

Jack Camp  
John Carr  
Jack Fillman  
James Fowler  
John Ganoe  
Leroy Harnish  
Arnel Jackson  
Donald Konkle  
John Lofgren  
Delbert Murray  
Walter Sweesy  
Rea Jeanne Ashbaugh  
Grace Francisco  
Florence Galena  
Eleanor Gates  
Iris Johnston  
Pauline Lewis  
Gladys McMaster  
Robert Noel  
Elizabeth Panton  
Stanley Bud Toy  
Geraldine Waite  
Arnold Jackson

1939

E. H. DeVILDER, Principal

Darrell Robert Frederick  
Boyd W. Fulk, Jr.  
George Richard Haley  
Emmons Blaine Logue, Jr.  
Earle L. Myers  
Earl LeRoy McElhattan  
William Charles McGuirk  
John S. McHenry  
Robert J. Milliren  
Alvin C. Newberry  
Thomas Lee Peters  
John M. Shirey  
Grace Ann Zella DeWalt

Edith Luella Dittman  
Sara Ann Freeman  
Jean Evelyn Hale  
Ruth Maxine Logue  
Florence Katherine Master  
Helen I. McMaster  
Audrey Louis Milliren  
Janet Noel  
Bertha Ann Louise Perkins  
Isabelle Josephine Stubble  
Muriel Josephine Reed  
Katherine Lee Fowler  
Robert Eugene Shirey

1940

E. H. DeVILDER, Principal

James R. Camp  
Howard A. Carroll  
Robert L. Cushing  
William E. Dittman  
Donald A. Elder  
J. Howard Myers  
Paul K. Wellman  
Esther Faye Ashbaugh  
Doris Murine Fillman  
Betty J. Fulmer  
Laura Jeane Fulmer  
Geraldine Francis Ganoe  
Anna Jane Gerber  
Violet Jean Harnish  
Martha Rachel Klingler  
Helen Elaine Konkle  
Bertha Elizabeth McHenry  
Flora Belle McQuiston  
Alice Kathleen McQuiston  
Maxine Morgan  
Anna Mae Sheakley  
Bette Jean Shultz  
Ethel Jane Toy  
Rea L. Vensel

1941

E. H. DeVILDER, Principal

Donald W. Clawges  
John B. Francisco  
Robert E. Fulk  
Cecil Robert Hale  
Donald R. Hopper  
Raymond L. McElhattan  
Robert H. Myers  
Robert E. Plunkard  
John H. Potts  
William James Uncapher  
Bryan J. Wentling, Jr.  
Anna Marie Altman  
Velma Luella Best  
Betty Olive Grazier  
Helen Jane Haggerty  
Phyllis Joan Heller  
Mary Alice Hess  
Lois Jean Hopper  
Maxine Elliott Klingler  
Evelyn Graff Mimm  
Muriel Ailene Neely  
Corrine I. Shirey  
Marjorie E. Shultz  
Helen J. Vensel  
Robert Jackson



1942

E. H. DeVILDER, Principal

Madeline Ashbaugh  
Martha Ashbaugh  
Evelyn Bechtel  
Sara Elder  
Hilda Fillman  
Helen Jean Frederick  
Marilou Freeman  
Helen Klingensmith  
Jean Konkle  
Alma Lowers  
Helen McQuiston  
Phyllis Myers  
Loretta Sweesy  
Marilyn Reed  
Vincent Ashbaugh  
Arthur Cushing  
Meredith Dittman  
Albert Edinger  
John Fleming  
Claude Frederick  
George Green  
John Irwin  
Lawrence Linnon  
Robert Linnon  
Eugene McHenry  
Harold Master  
Orin McMaster  
William Milliren  
James Robertson  
Donald Sherman  
David Shirey

1943

E. H. DeVILDER, Principal

Helen Mae Garris  
Bernice Fulmer  
Elizabeth Jeanne Robertson  
Janet Isabella Pantan  
Charles William Sheakley  
Anna Mae Edinger  
Denton Murray Kirkwood  
Elizabeth Jean Gormley  
Martha June Best  
Robert E. Hopper  
Ivan C. Best  
Donna Hahn  
Ruth Ellen Myers  
Betty Irene France  
William Lyle Neely  
Beatrice Mae McElhattan  
Helena Grace Wentling  
Delbert Leroy Potts  
Walter Leroy Hamilton  
William B. Myers  
William Mohn Heller

1944

GEORGE E. BLOOM, Principal

Norma Jean Ashbaugh  
Ella Mae Bashline  
Mary Jane Chechak  
Pauline Alberta Dittman  
Mary Frances Galena  
Phyllis Elizabeth Hale  
Darl H. Heller  
Mildred Marie Leavy  
Patricia Helen Logue  
Beatrice Ann Master  
Richard G. McHenry  
Ruth Ella Milliren

Kathryn Louise Shields  
James Wesley Shirey  
Charles R. Vasey  
Elizabeth Jane Heller

1945

G. E. BLOOM, Principal

Denton Ashbaugh  
Rachel Ellen Ashbaugh  
Edna L. Bechtel  
June Best  
Mary Isabelle Dearolph  
Lois Edinger  
Marilyn A. Fulmer  
Patricia Ann Gates  
Audene Hahn  
Aldine Irwin  
Peggy Brooks Kester  
Kathleen King  
Charles Frank Koos  
Corrine Isabell Linnon  
Lois Lorraine Linnon  
Joe McElhattan  
Freda Catherine McLaughlin  
Martha G. Myers  
Helen Jean Nevel  
Kathryn Elizabeth Page  
Robert LeRoy Platt  
Susan Louise Shirey  
Bette Louise Sweesy

1946

H. A. HARTMAN, Principal

Drusia Eddinger  
Marilyn Edinger  
Harvey Ganoe  
Mary Jane Green  
Jim Hale  
Richard Harnish  
Donna Irwin  
Thelma Jackson  
Nancy Kester  
Marion Klingler  
Daryl Myers  
Harvey Potts  
Gloria Reed  
Sally Robertson  
George Schenck  
Walter Texter

1947

BUDD B. STEWART, Principal

Mary Lou Amsler  
Jane Liken Ashbaugh  
William Kahle Ashbaugh  
William George Bartow  
Geraldine Elizabeth Arminta Bechtel  
George Cleveland Bunch  
Pauline Elaine Carroll  
Robert Eugene Fleming  
Laura Jean France  
Victor Newton Jameson  
Edward Emil Koos  
William Paul Linnon  
Caroline Roberta Logue  
Merle Dean McMaster  
Yetta Jane Miller  
James Benton Myers  
Betty Jean Shields  
Patricia Jean Shirey  
Dean Khlare Shoup  
Marshall Lynn Vasey



1948

BUDD B. STEWART, Principal

Mary Margaret Chapin  
Dorothy Elizabeth Barlett  
Charles Richard Noel  
Elizabeth Ann Linnon  
George Wesley Freeman  
Bernice Pauline Nevel  
Keith Master Ashbaugh  
Maxine Elwanda Sherman  
Ada Jane Master  
Charles Glenn McMaster  
Margaret Elizabeth Jameson  
Glenn Paul Shirey  
Mildred Elaine Watson  
Don Leroy Wentling  
Paul Francis McGuirk  
Ruby Val Jean Jackson  
Donald T. Cushing  
Ruth Joan White  
John Wallace Smith  
Helen Roberta Deloe  
Robert Lewis Page  
Robert Allan Ashbaugh  
John Wesley Potts  
Ida Margaret Matthews  
Helen Elizabeth McCall  
Victoria Barbara Chechak  
Mary Joan McQuiston  
Lois Elvira Chadman  
Nancy Marie McElhattan

1949

BUDD B. STEWART, Principal

Barbara Robertson  
Frank Chechak  
Anna Jean Uncapher  
Sara Cushing  
Robert Raybuck  
Thelma Kohler  
William Neely  
Mary Belle Craig  
Barbara Lee Master  
Laura Lutsko  
Kenneth Myers  
Patricia Vay Hopper  
Stanley Richard Texter  
Thelma McHenry  
Nancy Louise Whitling  
William George Allison  
Nancy Jane Bartow  
Andrew Spirnock  
Ronald D. Best  
Rose Ellen Johnson  
James Fleming

1950

BUDD B. STEWART, Principal

LaDonna Jean Hanst  
Richard Leroy Reed  
Ruby Jo Ann Parks  
Charlotte Marie Best  
Robert Charles Kunkle  
Margie Bell Horton  
Mary Frances Master  
Elliott Earnest Ryder  
Betty Ann McElhattan  
Phyllis Maxine Nevel

George Wesley Henglein  
Estella Harriet McHenry  
Betty Lou Lowers  
Edmond Rupert Fichte  
Shirley Ann Page  
Joyce Mae Shoup  
Ronald Eugene Bowser  
Bertha Joan Logue  
Loretta Ann Novak  
Paul Dean Ashbaugh  
Naomi Marie Garris

1951

BUDD B. STEWART, Principal

Thomas B. Black  
Dorothy Agnes Chechak  
John Daniel Graff  
Harry James Harnish  
Peggy Jo Hopper  
John K. Hale  
Mary Elizabeth Ketner  
James G. Irwin  
Barbara Lee Mimm  
Delores Anne Montgomery  
Donald James Kunkle  
Betty Avonelle Nevel  
Jack F. Leavy  
Thelma June Raybuck  
Thomas Eugene Marshall  
James Wesley McConnell  
Betty Maxine Shoup  
Ronald Eugene McHenry  
Frank Eugene Pavlic  
Bonnie Lee Shirey  
Beverly Ann Shirey  
Clifford Andrew Perkins  
Burton Dean Roe  
Harry Clair Sherman  
Barbara Louise Shirey  
Judd Franklin Wetzel  
Dolores Agnes Spirnock  
Darrell Elden White

1952

BUDD B. STEWART, Principal

Philomena Novak  
Forrest Jackson  
James Herzel  
Kenneth King  
Pauline Deloe  
James Ashbaugh  
Betty Bartow  
Donna Best  
Dolores Bunch  
William Couchenour  
Ida Jackson  
Kay Klingler  
Shyrli Kribbs  
Thomas Leavy  
Helen Linamen  
Peggy Linnon  
Thomas McElhattan  
Donald Myers  
Homer Nevel  
James Sheely  
Richard Sherman  
Donald Texter  
Richard Watts

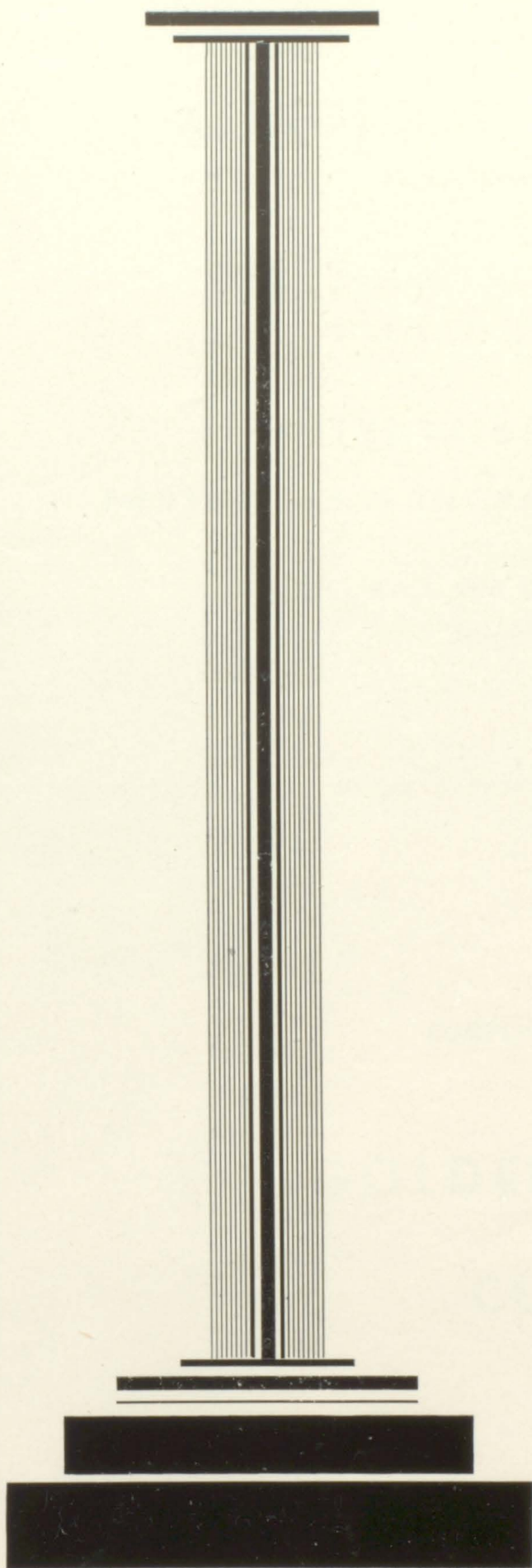


# AUTOGRAPHS



# AUTOGRAPHS





ADVERTISING





ADVANCED TECHNOLOGY



# **KLINGLER'S RESTAURANT**

ST. PETERSBURG, PENNA.

SODA FOUNTAIN, SANDWICHES  
STEAKS and CHOPS

## **PRIVATE DINING ROOM**

For DINNERS, LUNCHEONS, CARD PARTIES

CALL FOR RESERVATIONS

FOXBURG 2821

COMPLIMENTS OF

**GOLDEN RULE  
CLUB**



**PARKER HOUSE HOTEL**

**LEGAL BEVERAGES**

Meals, Lunches and Sandwiches

Phone 3144

PARKER, PA.

**PARKER DRUG COMPANY**

The REXALL Store

Phone 2421

PARKER, PA.

**GRAFF IMPLIMENT SERVICE**

**CASE FARM MACHINERY**

Two Miles South on Route 338

KNOX, PA.

COMPLIMENTS OF

**WATSON GROCERY STORE**

TURKEY CITY, PA.

**THE EMLENTON NEWS**

Printers of the CARDINAL

Dial 435

EMLENTON, PA.

COMPLIMENTS OF

**KUNKLE'S**

COMPLIMENTS OF

**HILLTOP ROLLER RINK**

Skating Every Tuesday, Wednesday,  
Friday, Saturday and Sunday

EMLENTON, R. D. 2

**THE  
FARMERS NATIONAL BANK**

EMLENTON, PA.

Member of  
THE FEDERAL RESERVE BANK  
and  
FEDERAL DEPOSIT INSURANCE CORP.

**OFFICERS**

H. T. Jolly ..... Chairman of the Board  
Edgar S. Hugus ..... President  
L. E. Hughes ..... Vice President  
Alice L. McLaughlin ..... Cashier

**DIRECTORS**

H. T. Jolly	Ralph V. Freeman
Edgar S. Hugus	F. H. Crawford
L. E. Hughes	J. T. Crawford

**SHEFFER  
CHEVROLET CO.**

**CHEVROLET and OLDSMOBILE**

Sales and Service

PHONE 380

EMLENTON, PA.



## **CONGRATULATIONS**

TO THE

**CLASS OF 1952**

**KNOX GLASS ASSOCIATES, Inc.**

KNOX, PENNA.

WHERE COULD YOU DO BETTER  
THAN BANK WITH  
THE OLD RELIABLE

**THE FIRST NATIONAL BANK**

OF EMLENTON, PA.

Resources Over \$8,000,000

Doing business at the old stand since 1873

## **ENJOY SECURITY**

Planning ahead, saving for tomorrow, may be the difference between security and insecurity in the years to come. Be wise. Remove the element of chance from your future. Start saving for it now. Open a Savings Account at this Bank. Then save on a regular schedule . . . a fixed amount each week or month. It's a wonderful feeling to have "cash in the bank." Come in Make a deposit today!

### **Butler Savings & Trust Company**

Main and Jefferson Streets, BUTLER

With Branch Offices in

EAST BRADY — FOXBURG  
PARKER

83 Years of Continuous Banking Service  
to this Community

Member Federal Deposit Ins. Corp.

**WINGERT  
CONTRACTING  
COMPANY**

BUTLER, PENNA.

<b>CORNER FRUIT MARKET</b> Leo Phillips & Sons Phone 472-M-1 CLARION, PA.	<b>ROSIE RESTAURANT</b> Sligo, Pa. HOME COOKED MEALS Open 7 Days a Week	COMPLIMENTS OF  <b>DR. GRAFF</b>
<b>SWITZER AUTO WRECKING</b> NEW and USED PARTS Rimersburg, Pa. Phone 45-R-31	<b>PAUL'S SELF-SERVICE</b> Red and White Store Fresh MEATS—Frozen FOODS Fresh Produce—Groceries Phone 2121 SLIGO, PA.	<b>McCAMANT HARDWARE</b> EVERYTHING IN HARDWARE Phone 3 Knox, Penna.
<b>BEST WISHES CLASS of '52</b> <b>Mortimers Service Station</b> Groceries — Confections <b>TEXACO PRODUCTS</b> Rimersburg, Pa.	<b>McKINNEY'S MARKET</b> Ralph L. McKinney, Prop. It's Fine to be Big Enough To Serve All Your Wants In a Good Food Market SLIGO, PA.	<b>KING'S DRUG STORE</b> The REXALL Store Knox, Penna. Phone 74
<b>STEWART SERVICE</b> Gas, Oil and Minor Auto Repairs Refrigerator and Watch Repairing SLIGO, PA.	<b>WM. E. GARIS</b> General Merchandise TURNIP HOLE, PA.	<b>CENTRAL GARAGE</b> W. P. SHAKELY H. M. BOYER Knox, Pa.
<b>LOGUE &amp; SON</b>  <b>M E M O R I A L S</b>  SLIGO, PA.	Compliments of <b>McCOY and MARSHALL</b> <b>LUNCH</b>  FOXBURG, PA.	Compliments of <b>Mean's Creamery and Dairy</b> Home of Pasteurized and Homogenized <b>DAIRY PRODUCTS</b> KNOX, PA.
Compliments of <b>HAWK FUNERAL HOME</b>  SLIGO, PA.	Compliments of <b>SLOAN'S</b> <b>SUPERETTE MARKET</b>  EMLENTON, PA.	<b>LINNON'S</b> <b>CLOVER FARM STORE</b> MEATS — GROCERIES Phone: Foxburg 2761 WE DELIVER St. Petersburg, Pa.
<b>SLIGO HARDWARE CO.</b> Hardware and Paints Electrical Appliances Magic Chef Gas Ranges Dexter Washers  Phone 2464 SLIGO, PA.	<b>WHITEHILL'S</b> Lunch and Service Station Route 38 1 1-2 Miles East of Emlenton <b>SANDWICHES of All KINDS</b>	<b>CONGRATULATIONS</b>  TO THE  Graduating Class   <b>SHADY GLENN</b>  Mr. and Mrs. G. D. King
	<b>H. T. CHAPIN</b> General Merchandise <b>FREE DELIVERY</b> Phone: Foxburg 2456 St. Petersburg, Pa.	



# **W. C. Cunchula**

MARIASVILLE, PENNA.

**USED CARS, TRUCKS, FARM MACHINERY**

**HOME OF A MILLION USED PARTS  
FOR ANY MAKE OR MODEL TRUCK OR CAR**

**24 HOUR WRECKER SERVICE**

Phone: FOXBURG 3146

## **Congratulations Graduates . . .**

An important mile-stone in your life has been passed. May  
ambition give you the urge to succeed in every worthy effort,  
and patience and fortitude cheer and protect you as you carve  
out that which to you means most.

## **Russell Bennett Studios**

BUTLER, PENNA.

**PHOTOGRAPHER FOR THE CLASS OF '52**

<b>VICKERS GREENHOUSE</b> A. E. Vickers, Prop. <b>VEGETABLE and FLOWERING PLANTS</b> Phone 634-R-23 <b>KNOX, R. D. 2, PA.</b>	<b>CHUCK'S PENNZOIL STATION</b> Charles E. Hanst, Mgr. Gasoline, Oil, Tires and Tubes Expert Washing and Greasing Phone 153 <b>KNOX, PENNA.</b>	Compliments of <b>PIROCH'S DRUG STORE</b> Prescriptions a Specialty Main Street <b>EMLENTON</b>
<b>RED and KEN'S BOWLING ALLEY</b>  <b>PARKER, PA.</b>	Compliments of <b>M. WAYNE WEAVER</b> Insurance Phone 90 <b>KNOX, PA.</b>	Compliments of <b>MAIN ST. NEWS STAND</b> Phone 206 <b>EMLENTON, PA.</b>
Compliments of <b>DR. HARTMAN</b>  <b>PARKER, PA.</b>	<b>PANTHER SPRINGS GULF SERVICE</b> 1 1-2 Miles East of Emlenton Route 38	<b>J. A. STROTMAN</b> Watchmaker and Jeweler <b>EMLENTON, PA.</b>
Compliments of <b>D E A N ' S</b> Greenhouse and Flower Shop Phone 2101 and 3301 <b>PARKER, PA.</b>	<b>J. H. STEVENS</b> Jeweler Watch Repairing, Engraving Jewelry Repairing <b>EMLENTON, PA.</b>	Compliments of <b>MORRISON TIRE SHOP</b>  <b>EMLENTON, PA.</b>
<b>RUDOLPH'S FLORIST AND SPORT SHOP</b>  <b>BRUIN, PA.</b>	<b>LULLABY LANE SHOPPE</b> Ruth K. Ace, Proprietress Phone 5411 <b>EMLENTON, PA.</b>	<b>CARLSON'S RESTAURANT</b> HOME COOKED MEALS HOME MADE PIES Eau Claire, Pa.
<b>RIEDER'S AMOCO SERVICE</b> GAS, OIL, GREASING and TIRES Phone 2696 <b>BRUIN, PA.</b>	<b>THE MARY-BETH SHOPPE</b> Ladies' Apparel Phone 279 Main Street <b>EMLENTON</b>	<b>KEYSTONE SUPPLY CO.</b> Lumber, Cement General Hardware Foxburg, Penna.
COMPLIMENTS OF <b>L. C. "JOE" BOTTS</b>	<b>KEPPLES' STORE</b>  <b>CALLENSBURG, PA.</b>	Compliments of <b>Naughton's Restaurant</b> <b>FOXBURG, PA.</b>
Hardware, Farm Impliments and APPLIANCES <b>C. M. DUNLAP</b> <b>CALLENSBURG, PA.</b>	<b>J. R. DUNLAP</b> Fertilizer, Grains FLOUR and FEEDS ROOFING, HARDWARE, Etc. Callensburg, Pa.	Compliments of <b>LEFTY NEVEL</b> <b>ST. PETERSBURG, PA.</b>



**BERNIE'S  
RADIO SERVICE**

Radio and  
Television  
Sales and Service

Phone 2636

PARKER, PENNA.

COMPLIMENTS OF

**HARRY'S MARKET**

FOXBURG, PA.

**C. C. IRWIN**

Carpentry and Painting  
NEW OR OLD WORK

Phone: Foxburg 2411

FOXBURG, PA.

COMPLIMENTS OF

**RAYMOND L. McDOWELL**

COMPLIMENTS OF

**CLOVER FARM STORES**

**KIRKPATRICK'S  
Jewelers**

125 South Main Street  
BUTLER, PA.

QUALITY

Diamonds — Watches  
Silverware

Service

For Over Half a Century

**PIERCE MOTOR CO.**  
De Soto and Plymouth

**WESTINGHOUSE  
APPLIANCES**

Sales and Service

Phone 183

KNOX, PA.

COMPLIMENTS OF

**CLARION COUNTY  
NATIONAL BANK**

KNOX, PENNA.

**BENDER & HENRY**

KNOX, PENNA.

Phone 47

"Everything  
For the Builder"

**H. and E. HARDWARE**

If It's Hardware  
We Have It

EMLENTON, PA.

COMPLIMENTS OF

**PENNSYLVANIA  
ELECTRIC  
COMPANY**

KNOX, PENNA.

**H. B. BEELS & SON**

**INSURANCE**

KNOX, PENNA.

<p><b>CHAPMAN MOTOR CO.</b></p> <p>Phone 221</p> <p>KNOX, PENNA.</p>	<p><b>KOPPERS COMPANY, Inc.</b></p> <p>Penocol Plant</p> <p>PETROLIA, PA.</p>	<p>Compliments of</p> <p><b>LONG MOTORS</b></p>
<p>Compliments of</p> <p><b>HILLCREST DAIRY</b></p> <p>"FOR THE BEST— BUY HILLCREST"</p> <p>Foxburg, Pa.</p>	<p>PARKER, R. D. 1, PA.</p> <p><b>FIVE MAPLES</b></p>	<p>Compliments of</p> <p><b>FINLEY BARTOW</b></p> <p>ST. PETERSBURG, PA.</p>
<p>Congratulations, Seniors</p> <p><b>CALLENSBURG CREAMERY</b></p> <p>Manufacturers of</p> <p><b>LOBAUGH'S</b></p> <p>Country Maid Ice Cream</p> <p>CALLENSBURG, PA.</p>	<p><b>ECKERD'S</b></p> <p>of OIL CITY, INC.</p> <p><b>DRUG STORES</b></p> <p>Creators of Reasonable Drug Prices</p> <p>16 Seneca Street</p> <p>OIL CITY, PA.</p>	<p><b>SLICKER</b></p> <p><b>PIPE and TOOL CO., Inc.</b></p> <p>KNOX, PA.</p>
<p><b>MONROE SERVICE STA.</b></p> <p>Paul Berlin, Prop.</p> <p>GASOLINE, OIL, ACCESSORIES</p> <p>Phone: Knox 627-R-4</p>	<p>TOWING SERVICE, WELDING</p> <p>AUTO REPAIRS</p> <p>PAINTING</p> <p><b>BEALS GARAGE</b></p> <p>Phone 381 Emlenton, Pa.</p>	<p>Compliments of</p> <p><b>CORSO'S BEAUTY SHOP</b></p> <p>FOXBURG, PA.</p> <p>Phone: Foxburg 3-211</p>



Service — Quality — Satisfaction <b>JOHN N. BOYER</b> FURNITURE, UNDERTAKING Knox, Penna.	<b>YOUNG'S</b> <b>SERVICE STATION</b> R. D. 1, PARKER Phone: Parker 2043	<b>LONG'S CLEANERS</b> DYERS — SHOE REPAIRING Phone 2155
<b>SHAY'S</b> Pennzoil Service Station Tires, Tubes, Gasoline, Oil Phone 191 KNOX, PENNA.	<b>NORRIS L. HUMMEL</b> TIRE RECAPPING SEWER and FIELD TILE Route 338, Knox, Pa. Phone 634-R-13	<b>W. A. RHEA</b> <b>MEN'S STORE</b> SLIGO, PA.
Compliments of <b>WHITEHILL &amp; STUART</b> Phone 182 KNOX, PENNA.	<b>KNOX GULF SERVICE</b> Donald B. McMunn, Prop. GASOLINE — OIL Tires, Batteries, Accessories Washing and Lubrication Service Phone 205 KNOX, PA.	Compliments of <b>HENRY SUPPLY STORE</b>
<b>CLARION COUNTY</b> <b>FARM BUREAU</b> <b>CO-OP. ASSN.</b> Phone: CLARION 280 Phone: KNOX 242	<b>McCALL'S</b> MEN'S FURNISHING LADIES APPAREL Phone 109 KNOX, PA.	Compliments of <b>SLIGO NATIONAL BANK</b> SLIGO, PA.
<b>FREDDIE'S</b> <b>RADIO SERVICE</b> Appliances, Radios, Television Petrolia 2510 KARNS CITY, PA.	<b>BEST OF LUCK</b> <b>TO THE SENIOR CLASS</b> <b>EDENBURG MOTOR CO.</b> KNOX, PENNA.	Compliments of <b>CORSO'S MARKET</b> PARKER, PA.
<b>McMASTER BROTHERS</b> <b>TRUCK TRANSPORTATION</b> Moving a Specialty ST. PETERSBURG, PA.	<b>ANDREW SPIRNOCK</b> <b>ESSO SERVICE</b> Gas, Oil, Confectionary ALUM ROCK, PA.	<b>MRS. CORA E. GATES</b> <b>DRY GOODS, CLOTHING</b> <b>NOTIONS</b> PARKER, PA.
Compliments of <b>DR. STEWART</b>	<b>DEAROLPH JEWELRY</b> WATCH REPAIRING Hamilton, Elgin, Bulova <b>THE LATEST IN JEWELRY</b> Phone 2099 PARKER, PA.	Compliments of <b>C. I. GARRIS</b> Wentlings Corners, Pa.
Compliments of <b>C. J. WALKER</b>		<b>E. E. MASTER</b> General Merchandise ALUM ROCK, PA.

<p>Compliments of <b>KNOX FRUIT COMPANY</b> KNOX, PENNA.</p>	<p>Compliments of <b>FROSS RESTAURANT</b> PARKER, PA.</p>	<p>Compliments of <b>BOHLENDER &amp; JOHNS</b> FRANKLIN, PA.</p>
<p><b>THE STREAMLINE DINER</b> KNOX, PA. Excellent Dinners and Sandwiches</p>	<p><b>JOHN R. YINGLING</b> Sales—FORD—Service Phone 371 EMLENTON, PA.</p>	<p><b>MERRELL H. MIMM</b> FUNERAL DIRECTOR St. Petersburg, Pa.</p>
<p><b>BLAUSER ELECTRIC AND PLUMBING CO.</b> Phone 130 KNOX, PA.</p>	<p>Compliments of <b>SUNOCO SERVICE STA.</b> Lieberum and Barr EMLENTON, PA.</p>	<p>Compliments of <b>EMLENTON HARDWARE</b> EMLENTON, PA.</p>
<p>Compliments of <b>RAY'S CLOVER FARM STORE</b> Wentlings Corners, Pa. Phone: Knox 641-R-2</p>	<p><b>SNYDER'S SERVICE STATION</b> GULF DEALER Route 238 Between Emlenton and Knox</p>	<p>Compliments of <b>WILLIAM N. RUPERT</b> FUNERAL HOME Emlenton, R. D. 1, Pa.</p>
<p><b>WHYTE'S CLOVER FARM STORE</b> J. M. Whyte, Prop. THRIFT PLUS SATISFACTION</p>	<p>Compliments of <b>DETAR'S STORE</b> LAMARTINE, PA.</p>	<p>Compliments of <b>KNOX FARM SERVICE</b> KNOX, PENNA.</p>
<p>Compliments of <b>LEE DRUG STORE</b> PETROLIA, PA.</p>	<p><b>FOUST SERVICE STATION</b> Guaranteed Service ON ALL MAKES OF CARS Amaco Products</p>	<p><b>LOIS BEAUTY SHOP</b> Phone 263 EMLENTON, PA.</p>
<p><b>ROTTMANN'S SERVICE STATION</b> LUBRICATION—WASHING Confectionary, Ice Cream PETROLIA, PA.</p>	<p>Compliments of <b>ROBERTSON GARAGE</b></p>	<p>You've Used the Rest, Now Try the BEST <b>X-L-N-T Bleaching Fluid</b> Distributed by <b>H. C. KAPP</b> Eau Claire, Pa.</p>
<p>Compliments of <b>MARIETTA'S LUNCH</b> PARKER, PA.</p>	<p><b>VASEY'S GARAGE</b> TOWING SERVICE, REPAIRS Radiators Cleaned and Repaired Dial: Foxburg 2006 STERLING OIL and GASOLINE St. Petersburg, Pa.</p>	<p><b>L. L. NEELY &amp; SONS</b> LAMARTINE, PA.  <b>OLIVER — FERGUSON</b> MILK COOLERS and FREEZERS</p>



# Yearbook Engravings

*Featuring*



*"Specializing Year After Year Makes the Difference"*

**ZIMMERMAN ENGRAVING COMPANY**

**SYKESVILLE, PENNSYLVANIA.**

