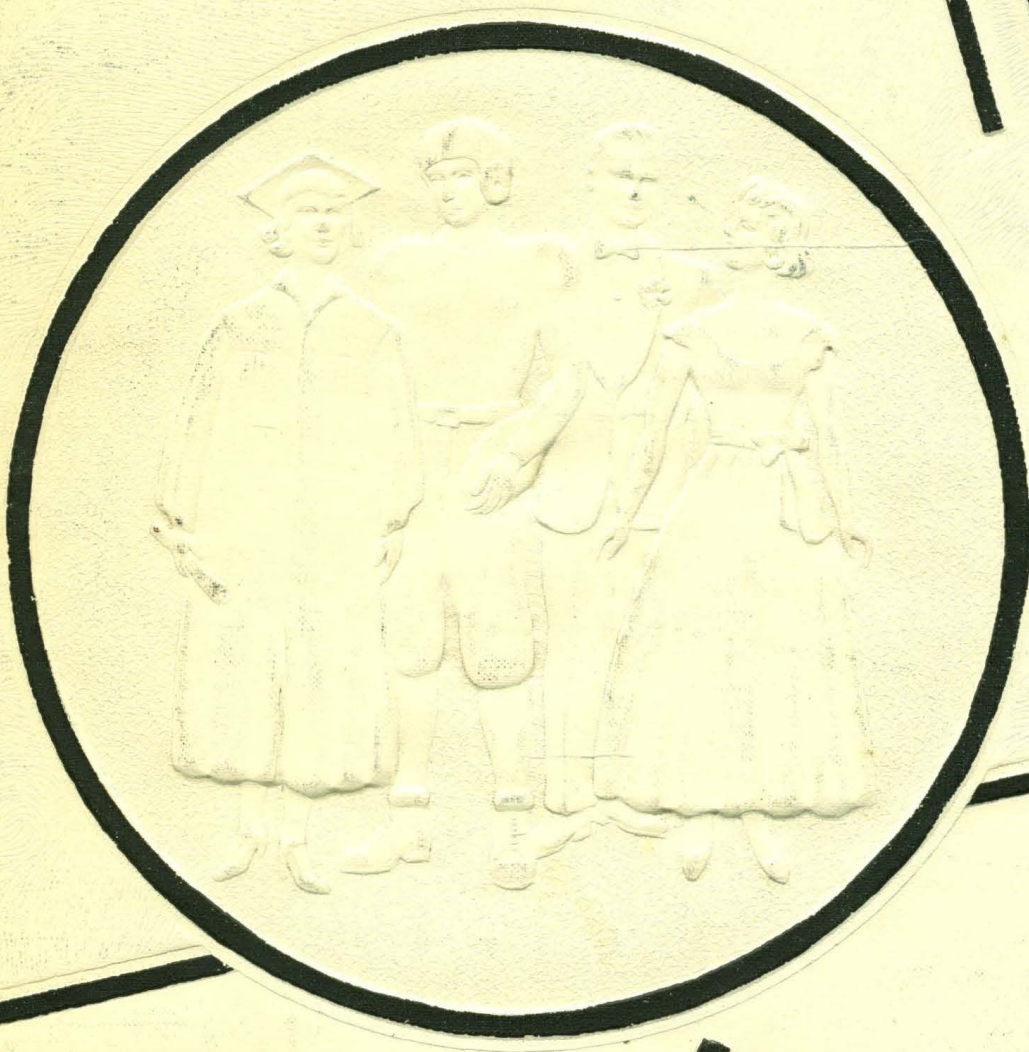
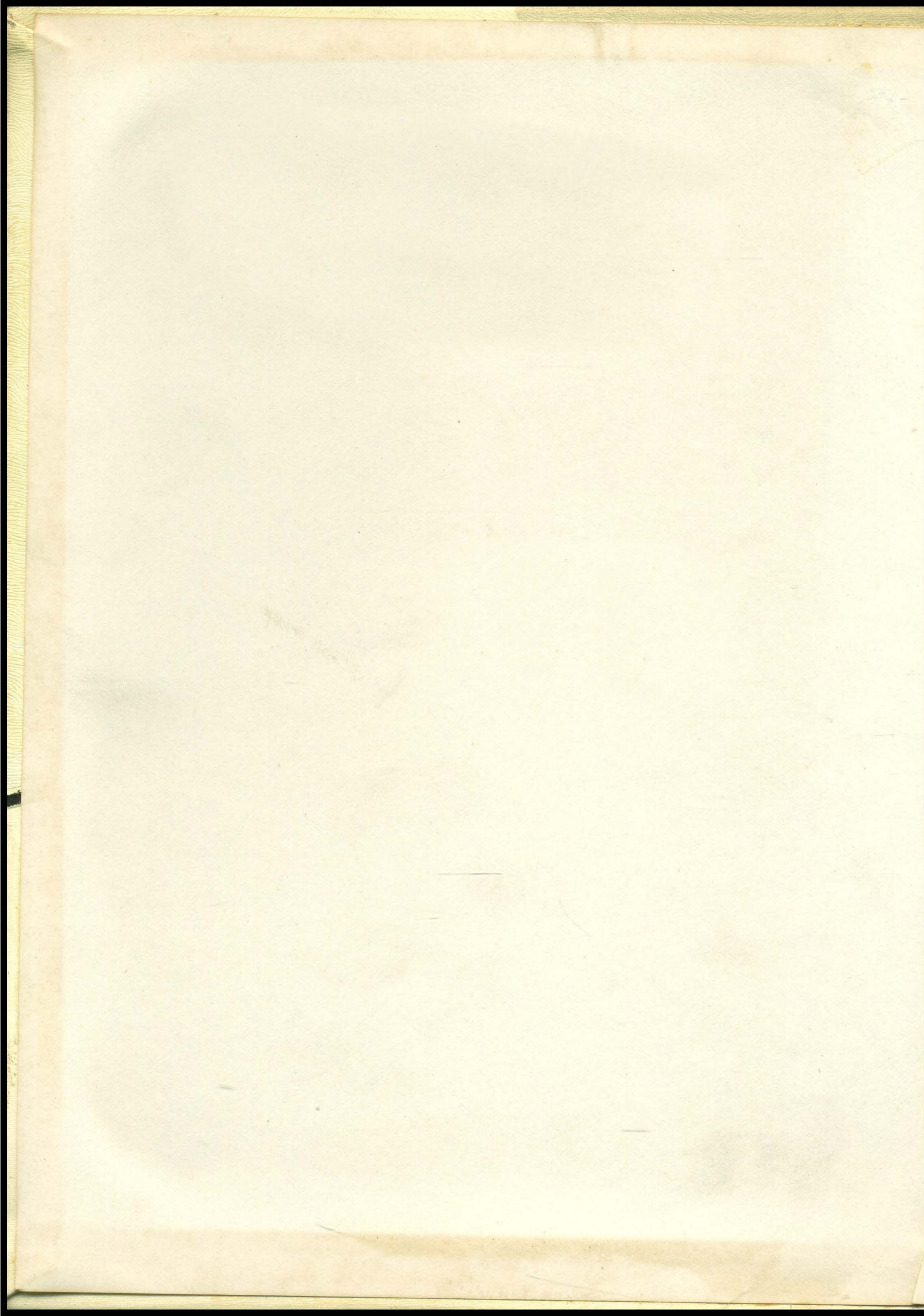
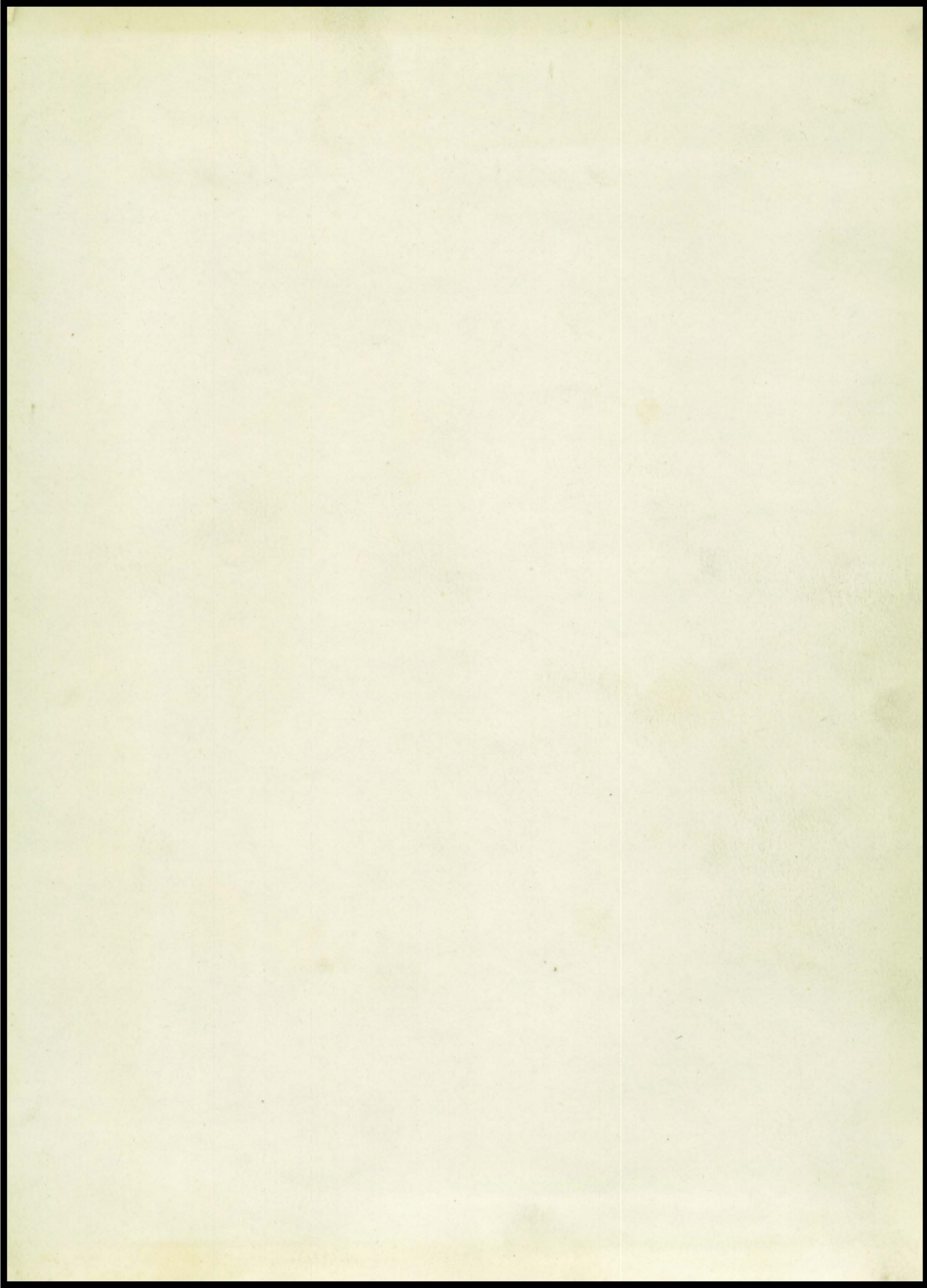


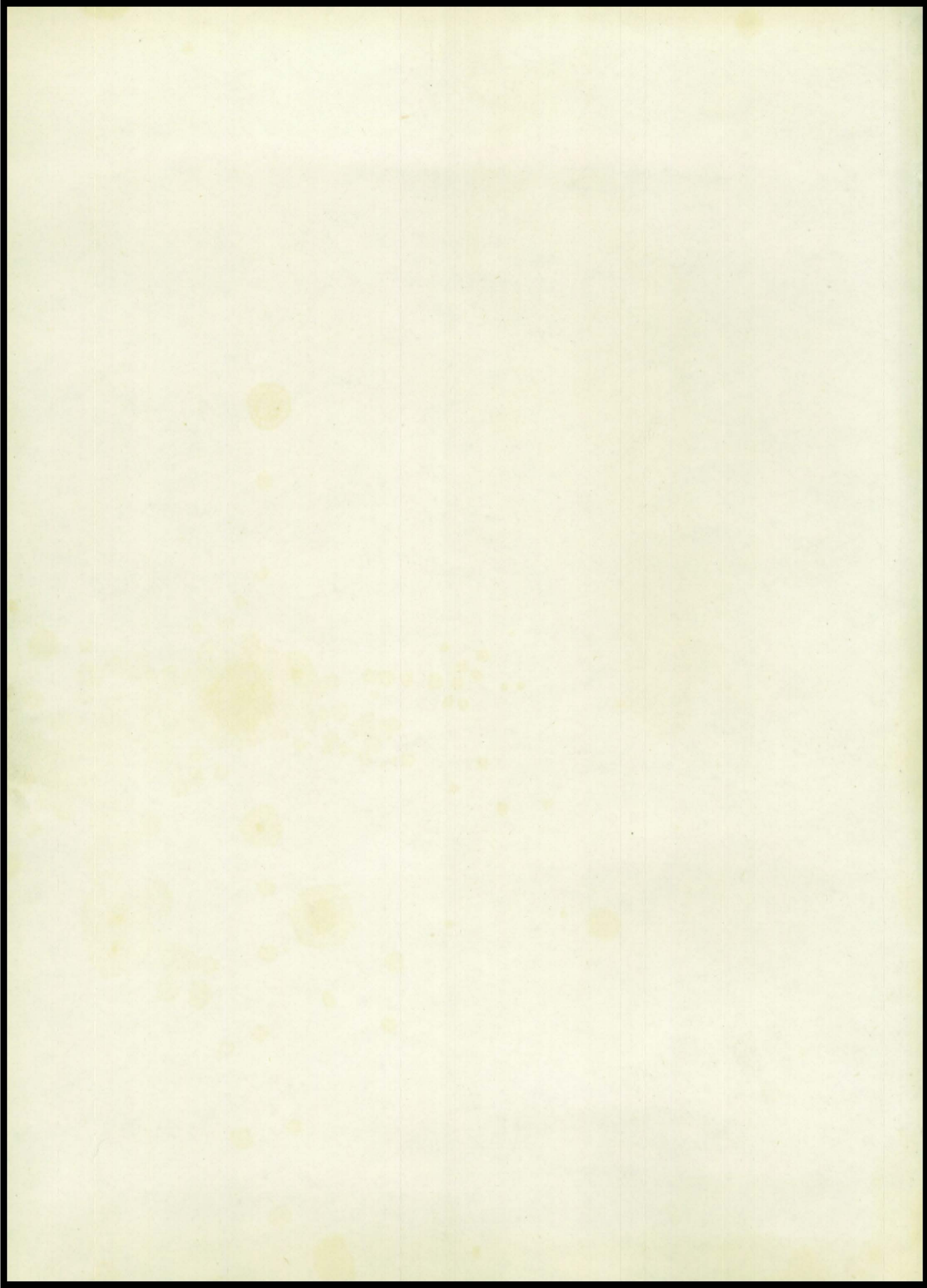
1955



Cardinal









The Senior Class

of

1955

presents

The Cardinal

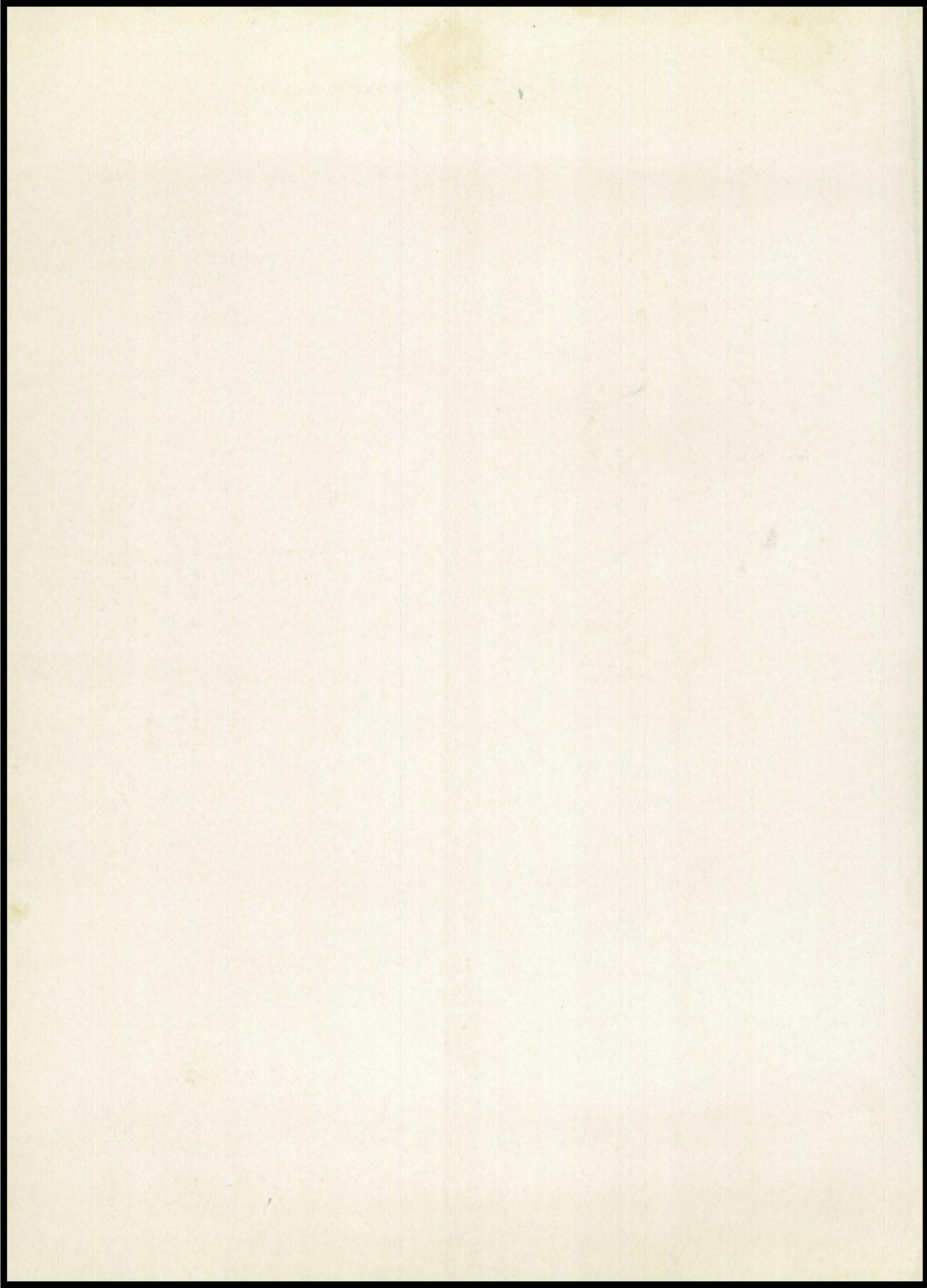
Published By

THE SENIOR CLASS

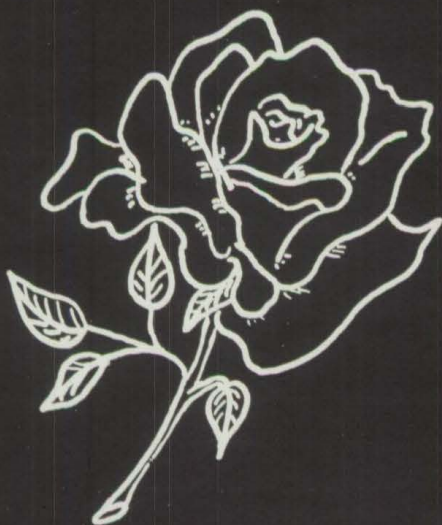

of

**St. Petersburg - Richland Township
Consolidated High School**

ST. PETERSBURG, PA.



Dedication



SCHOOL SONG

Petersburg High, our native school
To you we pledge our devotion.
For the Red and Black, our loyalty
Is boundless as the ocean.

REFRAIN

Dear old High School, we are with you
Strong and true,
You will always have our tribute
And our honor, too.
May the lasting ties of friendship
Unite our memories dear,
And remain with us forever more
Throughout all the years
Petersburg High we'll look with pride
To our efforts and endeavor.
Let Fortune take us where it may,
Our High School we shall honor.

—Alice Carr '35

DEDICATION



The class of 1955 is proud to dedicate this yearbook to our beloved eighth grade teacher, Mrs. Della Fillman. We feel Mrs. Fillman is a teacher who is an example for her students to follow. Mrs. Fillman has unselfishly devoted her life since 1904 to the career of expanding the education of our generation. The class of '55 wishes you many happy years in retirement.

Board of Education



Harris Dreibelbis
President



Ralph Watson
First Vice President



William Barlett
Second Vice President

Glenn R. Kester
Secretary



Donald Lynch



Robert Milliren



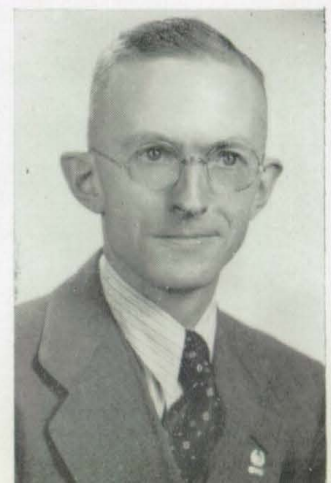
Kenneth Yingling
Treasurer



Lawrence Linnon



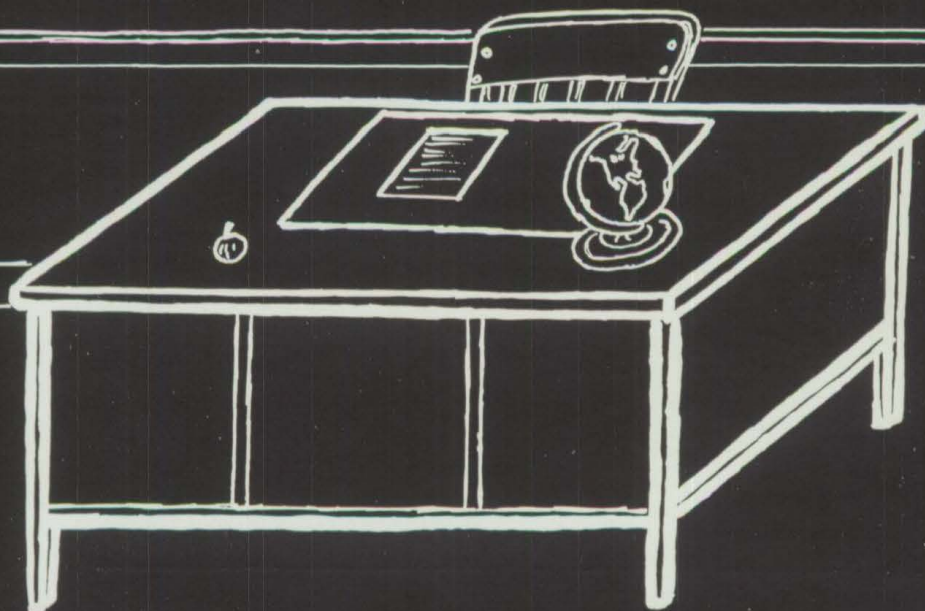
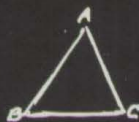
Paul Best



William Morgan

Faculty

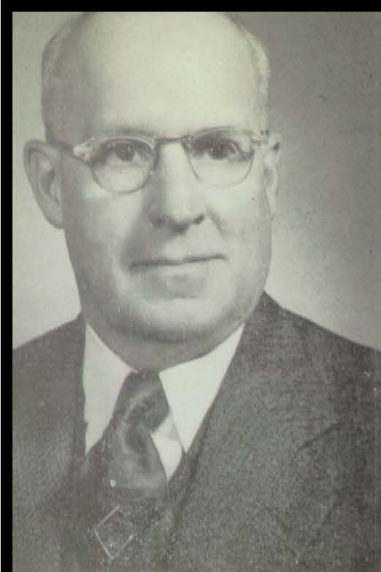
$$\frac{d}{a} \frac{c}{b}$$



R&K



We of this year's Senior Class wish to extend to you, Mr. Stewart, our sincerest appreciation for the guidance and help you have given us, not only during our four years in high school, but throughout all the years you have been with us. Not only have you been a wise counselor but also a personal friend to everyone.



S. Paul Toy

Penn State
B. S., M. S.
Mathematics, Science
Senior Class Advisor

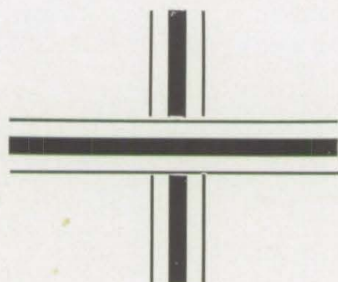
James R. Helmintoller

Bucknell University
Clarion State Teachers
College, B. S.
Social Studies,
Health, Phy., Ed.
Junior Class Advisor



Ernest Penone

University of Pittsburgh
Columbia University
F. B. A.
Freshman Class Advisor



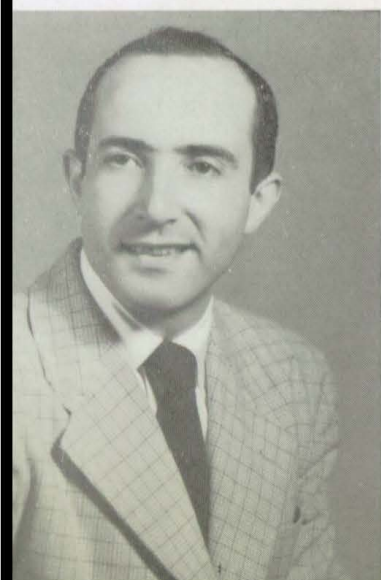
Patricia Russell, R. N.

Allegheny General Hospital
Pittsburgh, Pa.
School Nurse



Terese Helmintoller

Duquesne University
B. E.
Commercial
Sophomore Class Advisor

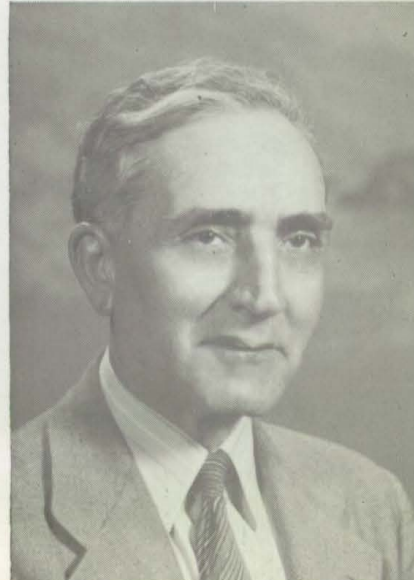


Albert Colonna

Duquesne University
B. S. University of Pittsburgh
Master in Music
Vocal Music

Fred C. Colonna

St. Pietro Maiello Conservatory
Italy
Indiana State Teachers College
Instrumental Music





Mrs. Phyllis Hale
Clarion State Teachers College
B. S.
Ohio State University
Grade 1



Miss Isabel Jones
Clarion State
Teachers College
Grade 2



Mrs. Elizabeth Earle
Slippery Rock State
Teachers College
Westminster College
Grade 3-4



Miss Ressie Heeter
Clarion State
Teachers College
B. S.
Grades 5-6

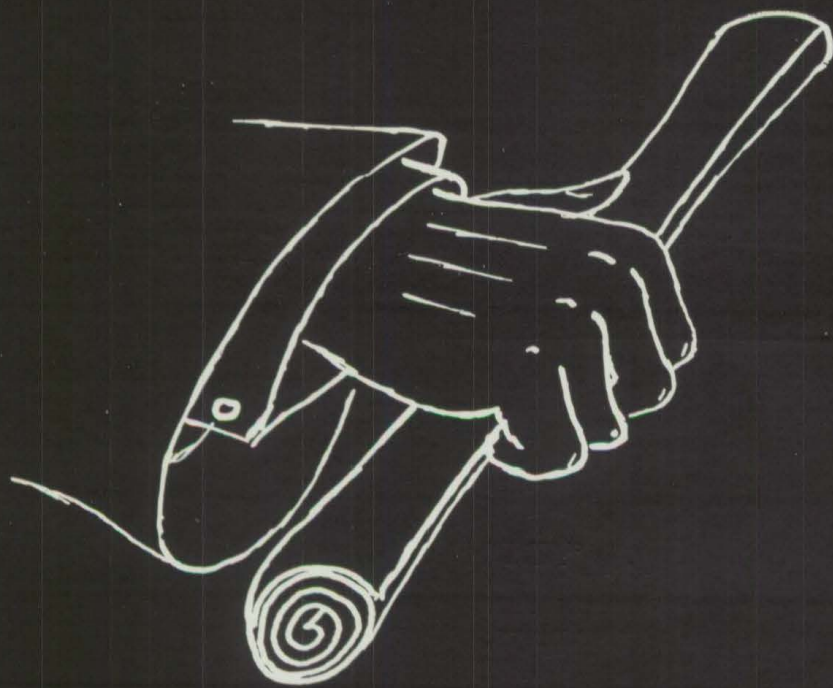


Mrs. Elgie Potts
Clarion State
Teachers College
Grades 6-7



Mrs. Della Fillman
Clarion State Teachers College
B. S.
Underwood Elliott Fisher
School of Business
Washington, D. C.
Marshall College
Huntington, W. Va.
Grades 7-8

We,
The Seniors



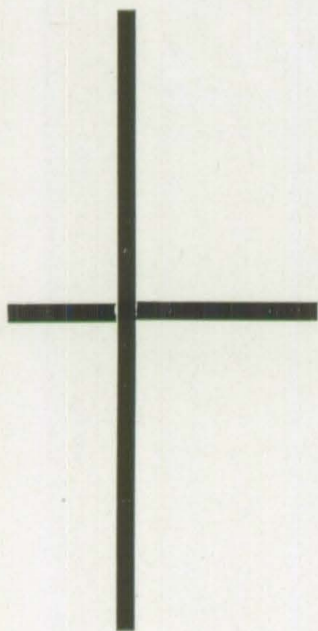
RWC



WILLIAM ROBERT ASBRIDGE "REBEL"

Bill came to our school in his Senior year from Memphis, Tennessee. Bill took an active part in sports here and at Memphis. He's never around when you're looking for him at least Mr. Toy has trouble finding him. Bill handled our finances this year and did a fine job. Good luck, Bill.

Basketball 4; Year Book Staff 4; Track 4;
Treasurer 4; Stage Manager 4.



NANCY JANE ASHBAUGH
"NANCE"

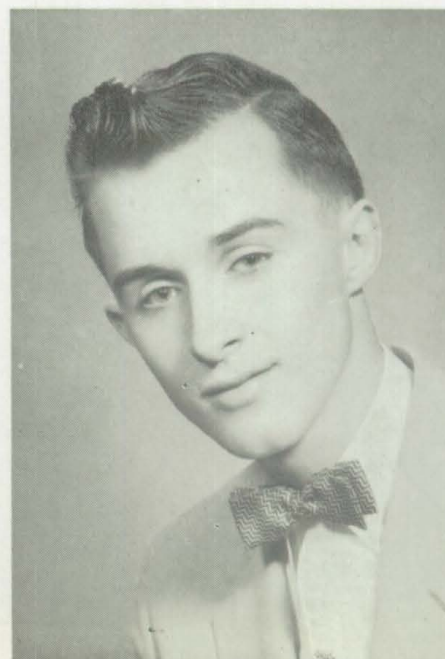
Nancy has been a great asset to our class and school with her musical abilities. She is our speediest typist and has been a cheerleader for four years. Nancy topped off her senior year with her marriage to Bob Trill of Parker. Best wishes, Nance.

Chorus 1, 2, 3, 4; Band 1, 2, 3, 4;
Orchestra 1, 2, 3, 4; Cheerleader
1, 2, 3, 4; Forensic 1, 2, 3, 4;
Operetta 1, 2, 3, 4; Yearbook 4;
Secretary 1, 2; Treasurer 3;
Pianist 1, 2, 3, 4; State Forensic 1

ARTHUR DAVID BELL "ART"

He is our handsome, but mischievous, Romeo. Art has been very active in school, taking part in all our plays, assemblies, and operettas. Art was a valuable asset to our Boys' and Mixed Quartet. He is the Salutatorian of our class. His future address will be Penn State.

Chorus 1, 2, 3, 4; County Forensic 3, 4; State Forensic 4;
Senior Play 4; Boys' Quartet 4; Mixed Quartet 4; Mixed
Ensemble 3, 4; Yearbook Staff 4; Class President 1; Vice
President 3, 4; Salutatorian 4; School Paper 3; Operetta 2, 3, 4.



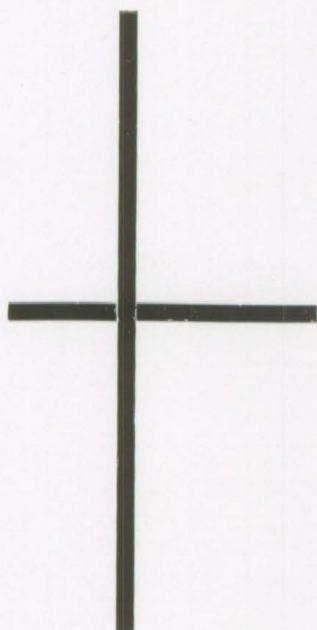


NANCY MAE BROWN

NANCY

Nancy, a most energetic young miss, who hails from Foxburg, has been a cheerleader for the past three years. Nancy has taken an active part in the operetta and Senior Play. Her pleasing manner and friendly smile have won her many friends. Good luck, Nancy.

Chorus 1, 2, 3, 4; Mixed Ensemble 3, 4; Operetta 2, 3, 4;
Cheerleader 2, 3, 4; Senior Play 4; Yearbook 4;
Prom Queen Attendant 4; Secretary 4.



MIKE CHECHAK

MIKE

Mike is the live wire of our class. He always has a smile and laugh for everyone. Mike is a service boy so off to the Air Force he will go. We know you will succeed in whatever you do. Good luck in the future, Mike.

Chorus 1, 2, 3, 4; Yearbook 4.

ROBERT CRAIG

CRAIG

Bob is the artist of our class. Any posters or pictures to be drawn? Call for Bob. He is a very pleasant fellow, who always succeeds. He had fine parts in both the Operetta and Senior Play. Bob has been a great asset to our class in all activities. Best of luck, Bob.

Chorus 1, 2, 3, 4; Operetta 3, 4; Mixed Ensemble 4;
Senior Play 4; Yearbook 4; County Chorus 2.

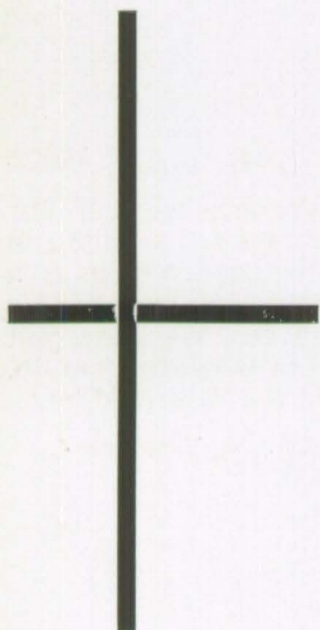




THELMA JEAN CREESE THELMA

Thelma brought honors to our school with her alto voice. She took an active part in the music department. Thelma took part in the girls' trio, mixed ensemble, and sang solos on different occasions. Her plans for the future are undecided but we suspect that wedding bells will ring. Good luck.

Chorus 1, 2, 3, 4; Trio 3, 4; Mixed Ensemble 3, 4; Forensic 3, 4; State Forensic 4; Operetta 1, 2, 3, 4; Senior Play 4; Year Book Staff 4; School Paper 3.



CHARLES NEWTON DELOE
PECK

Chuck is the fisherman of our class. Chuck hopes to do construction work after school and later attend college. Charles is quite talented in mathematics and in most things he attempts. Good luck.

Chorus 1; Basketball 2; Yearbook Staff 4; School Paper 3.

NORMA FLEMING NORMA

Norma is a very quiet young miss with excellent abilities in typing and shorthand. Norma has been a great asset in handling the prompting during our entertainments. She plans for a secretary job. We wish you the best of luck.

Chorus 3, 4; Operetta 4.

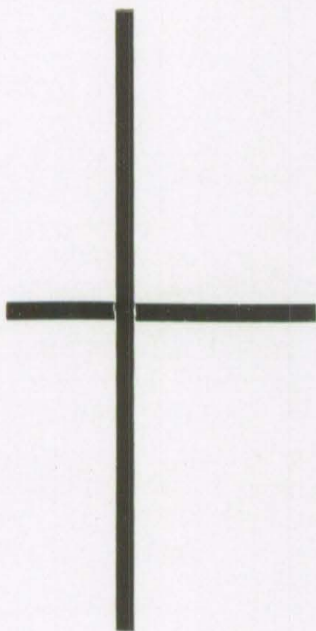




EDWARD GOBRECHT ED

This is it. The one and only master mind. Whether it be a class project or an assembly program, Ed usually had a brain storm. He was a great asset to our Mixed Quartet. We wish him lots of luck at Ursinus College, Collegeville, Pa. Good luck, Ed.

Chorus 2, 3, 4; Band 2, 3, 4; Orchestra 2, 3; Basketball 3; Basketball Mgr. 4; Senior Play 4; Forensic 2, 3, 4; State Forensic 2, 4; Mixed Ensemble 2, 3, 4; Boys' Quartet 2, 3; Mixed Quartet 4; Operetta 2, 3, 4; Yearbook Staff 4; Sgt. Arms 2; County Chorus 2; School Paper 3; Valedictorian 4.



CLEA GREENAWALT
CLEA

Here is the shortest member of our class. Clea had parts in our Operetta, and Senior Play. She played these with style. Clea took an active part in cheerleading for three years. Clea's future is undecided, but we wish her the Best of Luck in whatever she does.

Chorus 1, 2, 3, 4; Forensic 3, 4; Trio 3, 4; Mixed Ensemble 3, 4; Operetta 3, 4; Senior Play 4; Cheerleader 1, 3, 4; Year Book Staff 4; School Paper 3.

PEGGY FOUST PEG

Here is a sweet and silent little girl who is always ready to help. Peg was our Prom Queen this year and did a fine job. Peg also had parts in the Operetta and Senior Play. Peg's future is undecided but we wish her the Best of Luck.

Chorus 1, 2, 3, 4; Operetta 3, 4; Year Book Staff 4; Senior Play 4; Prom Queen 4.

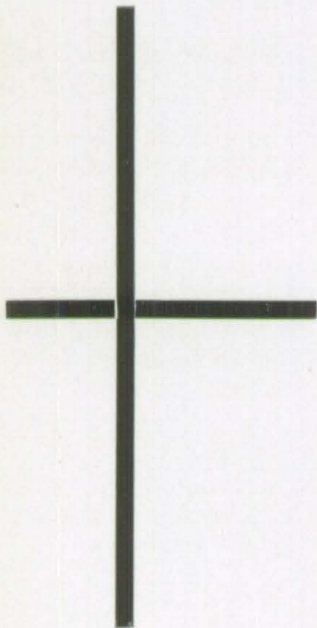




ALLEN INGLING AL

Allen is a new member of our class who hails from Maryland. When the brains were passed out he got a double portion. This lad is so intelligent we are certain he will succeed in whatever he tries. Alan's future address will be The United States Army. Later he plans to attend college. Best Wishes.

Chorus 4; Year Book Staff 4; Honor Student 4.



ROBERT KETNER BOB

Bob is one of the more active members of our class.

Bob, who hails from the Fox Estate, took part in activities ranging from candy salesman to a lead in the Senior Play. Bob is planning to attend college, but his career is still undecided. Good Luck in whatever you do.

Operetta 2, 3, 4; Chorus 1, 2, 3, 4; County Chorus 2; Senior Play 4; Year Book Staff 4.

PHYLLIS KLINGLER PHIL

Phyllis is a very active girl in our class. You may not be able to agree with Phyllis's ideas all the time but she will not give up trying. Phyllis took a very active part in the music department at Forensic and in the Operetta. She also had the part of Nancy in the Senior Play. Phyllis has been our Librarian for four years and intends to follow this profession at Margaret Morrison College in Pittsburgh. Best of Luck to a swell classmate.

Chorus 1, 2, 3, 4; County Forensic 4; State Forensic 4; Mixed Quartette 4; Mixed Ensemble 3, 4; Operetta 2, 3, 4; Senior Play 4; Year Book Staff 4; Majorette 1, 2, 3; Librarian 1, 2, 3, 4; School Paper 3; Honor Student 4.



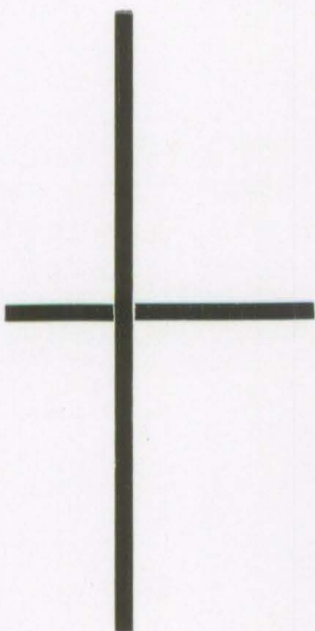


BILL LOGUE

BUTCH

Bill may not say much to anyone but he is thinking plenty. After school hours, Bill is entertaining and always has a joke or two up his sleeve. Bill was our Prom King this year, had a fine time, and did an excellent job. Bill's future is undecided. We wish you luck, Bill.

Chorus 1, 2, 3, 4; Basketball 2; Operetta 4; County Chorus 2; Newspaper Staff 3; Year Book Staff 4.



FRED MILLER

FRITZ

Fred is another new member of our class. This young man hails from Union Joint in Rimersburg. Fred is an excellent math student, this he proves while studying in Mr. Toy's classes. Fred's personality has won him many friends and will be a great asset to him in the future. We wish you lots of Luck in the future.

Year Book Staff 4

JOHN MURRAY

JOHN

John, the wandering class member, returned this year to finish high school at St. Pete. He has added much pleasantness to our Senior year. In the near future John plans to enter the service. Good Luck in the Future.

Chorus 4; Mixed Ensemble 4; Year Book Staff 4.

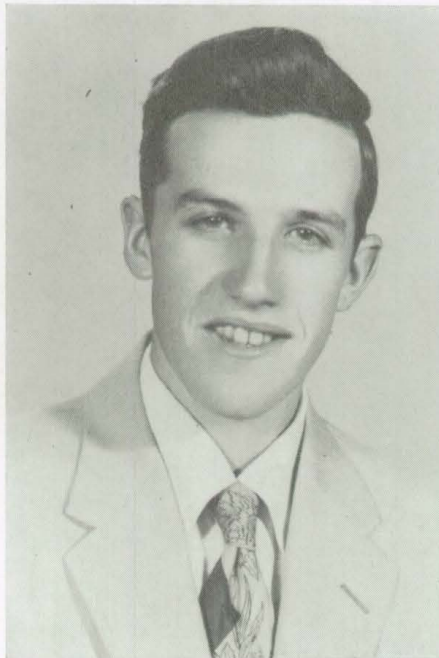
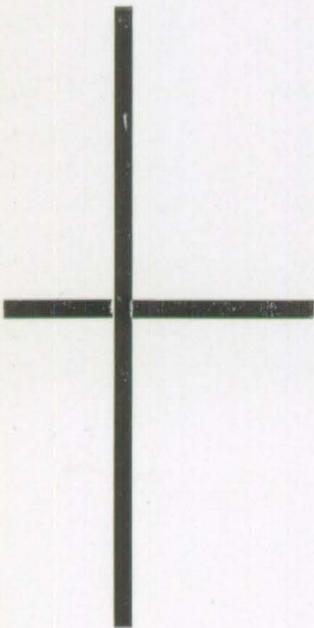




JOHN NOVAK BUTTERCUP

John is usually a silent student with few but important ideas. We all remember the siege with the apple cider at John's home last fall. John's Future is with Uncle Sam.

County Chorus 2; Track 2, 3, 4; Chorus 1, 2, 3, 4; Honor Student 4; President 2, 3; Year Book Staff 4.



BILL SHREFFLER BILL

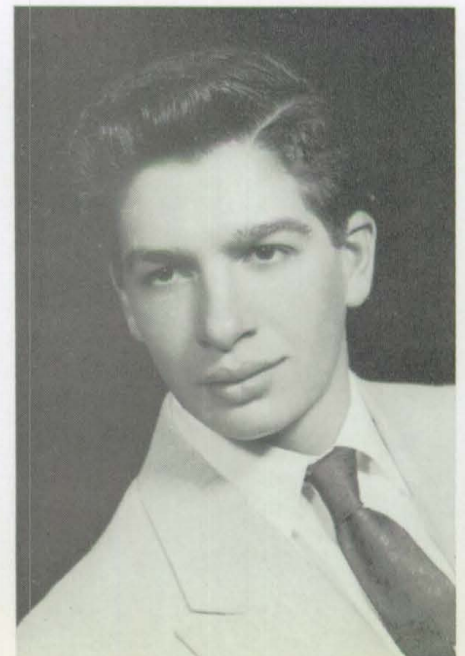
Bill is one of our farm lads. He has been Basketball Manager for the past two years. His plans for the future are also farming. Best wishes in whatever you do.

Manager 3, 4; Year Book Staff 4; Newspaper Staff 3.

RAYMOND SPIRNOCK TEX

This tall, nice looking president of our class has led us to much success. He plans to be a veterinarian. He is going to Grove City College for two years and then plans to attend The Univesity of Pennsylvarnia for four years. He was elected Honorary Captain of the basketball team and played a part of a Bill Collector in the Senior Play. Good Luck in the Future.

School Paper 3; Basketball 2, 3, 4; Senior Play 4; Year Book Staff 4; Track 3; Sergeant at Arms 3; President 4.

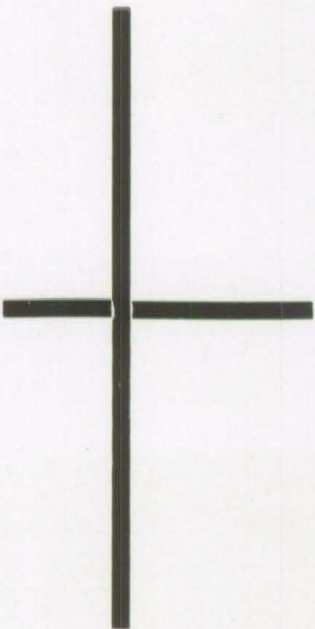




MAXINE TEXTER MAX

Maxine is one of the hardest working girls in the class. The young lady excels in English, typing and shorthand. Maxine is always glad to help, from typing the yearbook to substituting for teachers in the grades. When asked about her future plans, Maxine just smiles. Good luck.

Chorus 3, 4; Band 1; Orchestra 1; Year Book Staff 4;
School Paper 3.



WILBUR VAN ZANDT
WILLIE

That creeping Buick is run by none other than Wilbur. Always around whether helpful or not you could always depend on Wilbur. Wilbur looks forward to employment as a machinest in Franklin.

Volleyball 2, 4; Year Book Staff 4; Newspaper Staff 3.

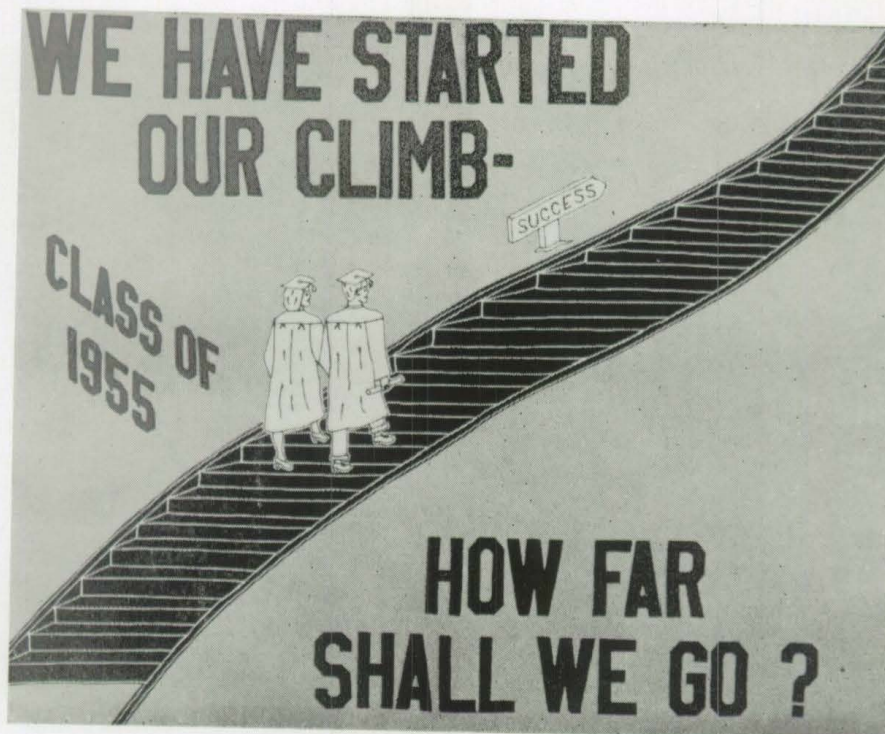
BARBARA YINGLING SPRINGS

Barbara is one of the most popular girls in our class. She has been a cheerleader for all four of her high school years. Barb had parts in both the Senior Play and Operetta. Barb's Future is undecided, but we wish her the Best of Luck.

Chorus 1, 2, 3, 4; Operetta 3, 4; Cheerleader 1, 2, 3, 4; Senior Play 4; Year Book Staff 4; Majorette 1, 2, 3.



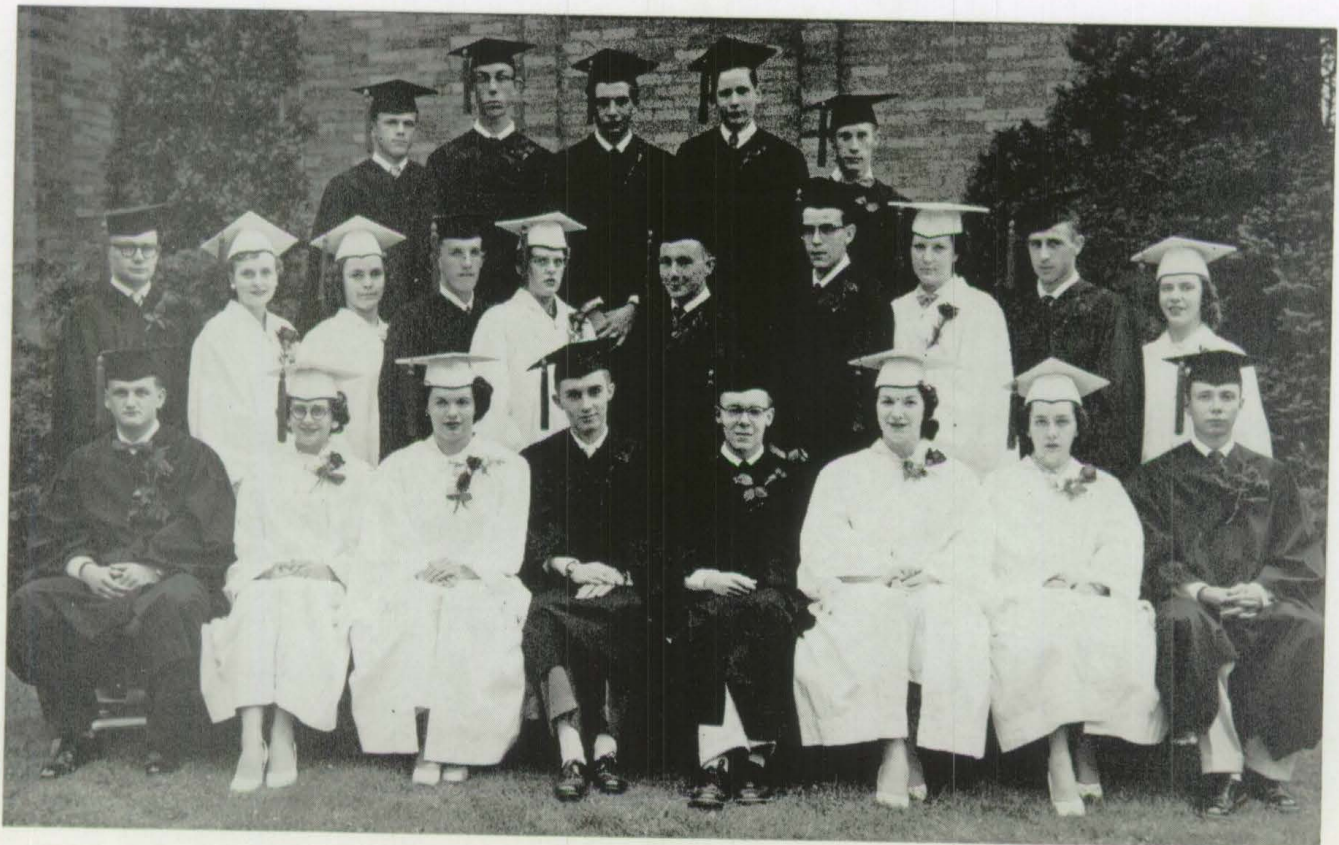
TIME WILL TELL



CLASS MOTTO

We have started our climb,
How far shall we go?

GRADUATION DAY



CLASS HISTORY

The school term of "51-52" came and our dream came true; four years ago we entered the portals of S. P. H. S. as little Freshmen. We were so confused at the new way things were going that most of us wished we were back in good old grade school. But with the kind supervision of Miss Porter, we began to enjoy our new school days. At our first class meeting we elected our class officers.

President Arthur Bell
Vice President Grant Crawford
Secretary Nancy Ashbaugh
Treasurer Kay Neely

We had a successful year with skating parties, bake sales, etc. Our initiation turned out to be one of the events we will not forget because we all enjoyed it.

Time went by and before we knew it we were Sophomores. Here the 26 of us were under the supervision of Mrs. Richard Helmtoller. These classmates were elected to guide us through the year.

President John Novak
Vice President Bob Craig
Secretary Dixie Bowser
Treasurer Willa Linamen
Sgt. At Arms Ed Gobrecht

Our bake sale turned out to be very successful. We had two skating parties and a Christmas party which were enjoyed by all. Our class rings were ordered. When they arrived it was just before Thanksgiving.

Time went swiftly by and we were Juniors and electing our class officers again.

President John Novak
Vice President Arthur Bell
Secretary Dixie Bowser
Treasurer Nancy Ashbaugh
Sgt. At Arms Ray Spirnock

Our activities for the year included one skating party, two candy sales, a bake sale and a square dance.

Then came the big night, May 14, the night of the banquet and Prom with Fritz Waldron's orchestra playing. Everyone had a wonderful time. The theme of our Prom was "Moonlight and Roses."

At last—our Senior year. Final officers were elected and they all did a wonderful job.

President Ray Spirnock
Vice President Arthur Bell
Secretary Nancy Brown
Treasurer Bill Asbridge
Sgt. At Arms Fred Miller

We worked hard this year but still we had fun. At the beginning of the year we had a magazine campaign which helped finance the year book. An operetta was produced by Mr. Albert Colonna in April and many seniors took part. It was called "Old Fashioned Girl."

Our Senior Play was selected and characters chosen by Mr. Penone. There were six girls and five boys who took part. It was titled "Shy Guy," and we all had fun in taking part. Our main event was on May 6.

We were honored by a banquet given by the Junior Class on Friday, May 13. Even though it was Friday, the 13th, we had a good time and nobody was troubled with bad luck. The Prom turned out to be a success bringing the 13th to a close. The theme of the Prom was "Starlight."

We were given another honor from the Alumni by a banquet and dance on May 27th.

We held our Baccalaureate Services on the night of May 29th in the high school auditorium. Commencement was on May 31st, bringing to a close our high school years.

This all has been in the past, and we only hope that the future can and will be as successful as the years we have put behind us.

CLASS PROPHECY

It was a warm summer day as I climbed into my Lincoln and started on a drive to pass the time away. As I glided along the smooth macadam, I began to think of the whereabouts of different members of the Class of '55. Having nothing better to do, I decided to look them up.

Driving along a dusty country lane, I heard the distant purr of an Allis Chalmers. I recognized the operator as Bill Shreffler. Since graduation, Bill has been very successful in the farming occupation.

Just around the corner I passed a pretty young miss in a shiny new Caddy. It was my former classmate, Phyllis Klingler, on her way home from college in Pittsburgh.

I was then faced by a large construction project. As I stopped to watch awhile, I heard the husky voiced superintendent, Charles Deloe, shouting instructions to his laborers. Charles is now a popular construction engineer.

Then I really saw mass production in operation. The sign along the highway read "Allen Ingling Nurseries, Inc." Alan now operates a tree nursery and also manufactures tree planters.

Turning down off the main drag, I proceeded down a shady country lane. Up in the woods, along the road, Mike Chechak slid the blade of the power saw through a stately oak. As it fell, three little Chechaks were there to trim the branches off for him.

I then passed a cute little bungalow with a pretty young lady busying herself in her flower garden. It was the former Cleda Greenawalt, passing her time away while waiting for Jim to be discharged from the Marines.

In a stream, obviously enjoying himself, stood a trout fisherman. "How is the Fishing?" Fred Miller replied, "Fine, I have twelve now." Fred went on to tell me he now holds an important position in a local bank.

As I pulled onto the road again, I was nearly hit by a huge Chrysler breezing by. At the wheel was Ed Gobrecht. Ed is now a business tycoon who devotes his spare time to after-dinner speaking.

My stomach insisted it was time for lunch, although my watch did not agree, so I stopped at the nearest diner. I discovered that the pert little waitress was a former classmate I knew as Peggy Foust. She and her husband now owned a chain of such diners. The lunch was delicious.

Outside, the brakes of a large tractor-trailer hissed as it came to a halt. A truck driver and two other well-dressed men sat down near me in the diner. They were Bill Logue and John Murray. As we recalled old times, they told me that they now owned and operated a fleet of semi-trailers. Today, they were riding along checking the safety of their drivers.

Again hitting the road, I heard a loud roar and a cute little hot-rod zoomed past. It was easy to see that this chopped and channeled Model A held a high-powered engine. The blond haired demon behind the wheel was John Novak, a popular stock car race driver of the local circuits.

As I cruised through the suburban area, I noticed two young ladies exchanging the latest gossip over the "backyard fence." It was the classmates I knew as Nancy Ashbaugh and Nancy Brown. Their family life must be successful, judging from the gang of youngsters playing around these spacious lawns.

Deciding to sooth my nerves with music, I turned into the local radio beam and was immediately comforted by the smooth, melodious voice of Art Bell, now crowding Eddie Fisher from the "top-spot." The music was so lively that I forgot my speed limit. Oh! Oh! A cop. That sleek cycle soon overtook me and I recognized the flatfoot as Bill Asbridge. Lucky I knew him!

After talking Bill out of fining me, I again turned to the radio. This time a songstress cut loose with a new hit. That's Thelma Creese.

After Thelma's song, a hostess for Pan American Airlines gave a commercial about the comforts on her airline. If anyone could do this, Barbara Yingling could.

In the back seat, my Great Dane began to moan and I knew where to go. I made a straight line for Ray Spirnock's Veterinary Hospital. I found Ray busily engaged in giving a herd of cattle their yearly check-up.

On my way home I stopped at a friend's business establishment and found the vice president to be a lady, a pioneer in this field, Maxine Texter. Her able stenographer was Norma Fleming, busily engaged in her daily routine.

My car needed a checkup so I stopped at a garage. There I was introduced by the chief mechanic, Wilbur Van Zandt to Bob Ketner, chief sales manager, and Bob Craig, chief stylist for Ford Motor Company.

By now, I was tiring of my long drive so I headed for home in the cool shadows of the evening, feeling contented that everyone in the Class of '55 had done so well in their careers.

CLASS WILL

- I, Nancy Ashbaugh, will my piano playing ability to Judy Lieberum.
- I, Billy Asbridge, will my Southern accent to Mary Jane.
- I, Arthur Bell, will my ability to drive to Dave Yingling.
- I, Nancy Brown, will my curly hair to Joyce McBride.
- I, Michael Chechak, will my desk in the senior room to Jim Edwards.
- I, Robert Craig, will my class giggles to Ken Hunsburger.
- I, Thelma Creese, will my mailbox to the Marine Corps.
- I, Charles Deloe, will my chewing gum to Mrs. Helmintoller.
- I, Norma Fleming, will my shorthand book to Caroline Livermore.
- I, Peggy Foust, will not will Tom Bowser to anyone.
- I, Cleda Greenawalt, will Guyma to Jack Page.
- I, Edward Gobrecht will my wrist watch to Mrs. Helmintoller.
- I, Allen Ingling, will my height to Bing Ganoe.
- I, Robert Ketner, will my "good" Plymouth to Budd B.
- I, Phyllis Klingler, will my vocal chords to the coming cheerleaders.
- I, William Logue, will my ability to sleep in class to Bill Burrell.
- I, Fred Miller, will my ability to get out of school to Bing Ganoe.
- I, John Murray, will my hunk of junk (typewriter) to Bill Burrell.
- I, John Novak, will my "41" Ford to Uncle Paul.
- I, Bill Shreffler, will my troubles to next year's manager.
- I, Raymond Spirnock, will my love and kisses to "Lee."
- I, Maxine Texter, will my pony tail to Nancy Brown.
- I, Wilbur Van Zandt, will my English books to Ken Hunsburger.
- I, Barbara Yingling, will my cheering ability to Nancy Vasey and Karen Murray.

We, the class of "55', being of sound "Mind" and body, will to the teachers:

Next year's Senior class to Mrs. Helmintoller.

Mr. Stewart's water pistols to Mr. Penone.

The remainder of the lab equipment to Mr. Toy.

The Senior "wheels" to Mr. Helmintoller.

CLASS MIRROR

Name	Alias	Favorite Pastime
Nancy Ashbaugh .	"Nance" . . .	Bob
Bill Asbridge . .	"Rebel" . . .	Mary Jane and Sports
Art Bell . . .	"Art" . . .	Traveling the Parker Flat
Nancy Brown . . .	"Brown" . . .	Going to Norma's
Michael Chechak .	"Mike" . . .	Women
Thelma Creese . .	"Thelma" . . .	Writing Letters
Charles Deloe . .	"Peck" . . .	Watching Football
Norma Fleming . .	"Norma" . . .	Skating
Peggy Foust . . .	"Peg" . . .	Tom
Edward Gobrecht .	"Ed" . . .	Photography
Cleda Greenawalt .	"Cleda" . . .	Seeing Jim
Allen Ingling . .	"Allen" . . .	Mechanics
Bob Ketner . . .	"Cookie" . . .	Fords
Phyllis Klingler .	"Phil" . . .	Caddies and Dean
Bill Logue . . .	"Butch" . . .	Women
Fred Miller . . .	"Fred" . . .	Eating
John Murray . . .	"Murray" . . .	Loafing
John Novak . . .	"Buttercup" . . .	Women and Wine
Bill Shreffler . .	"Shreff" . . .	Chevies
Raymond Spirnock .	"Andy" . . .	Mary Lee
Maxine Texter . .	"Max" . . .	Sylvan
Wilbur Van Zandt .	"Fritz" . . .	Driving
Barbara Yingling .	"Barb" . . .	Horseback Riding
Bob Craig . . .	"Ola" . . .	Dodges
Mr. Toy . . .	"Paul" . . .	Tearing Frogs Apart
Mr. Helmintoller .	"Dick" . . .	Terese
Mrs. Helmintoller .	"Terese" . . .	Dick
Mr. Penone . . .	"Ernie" . . .	Girls! Girls! Girls!
Mr. Stewart . . .	"Budd" . . .	Studebaker

CLASS MIRROR

Favorite Saying	Wants To Be	Will Probably Be
Oh!	Secretary	Housewife
You Dirty Bird	Baseball Player	Hobo
That's the Way it Goes	Engineer	Cab Driver
Hey Peg, Let's Go Home	Fashion Model	Mother of the Cheerleading Squad
Ah Horse & U — tar s Z	Man	Mouse
Honestly	Fashion Designer	Ole Maid
I'm a Don't Know	Engineer	Mule Skinner
Well, Brown	Secretary	Door to Door Salesman
Hey Brown, Let's Go Home	Secretary	Ballet Dancer
Well	President	Playwright
Oh, I don't care	Secretary	Bank Teller
Sacre Bleu	Admiral	Swabbie
& G@ — Sam.	Cookie Beggar	Crumb
Oh, Nuts!	Librarian	Library Book
You Ethiopian	Blue Angel	Red Devil
I Don't Dig That Trig	Skinny	Handsome
What a Hunk of Junk	Blue Angel	Red Devil
Let's Go Mike	Dead	Alive
Nothing	Outlaw	In-law
Whoa Now!	Vet.	Farmhand
You Know	Housewife	President of U. S.
Gigarette? Logue?	Hobo	Hula Girl
What'ya Mean Jelly Bean	Housewife	Jockey
Oh!	Anything But a Housewife	Housewife
Let's Get These Excuses In	Married	Old Maid
Where're the Wheels?	Teacher	Lifeguard
Seniors!	Typewriter Repair Woman	Teacher
Knock It Off	Hot Rod Driver	Water Gun Tester
Are ALL You People Busy?	Pres. of the Studebaker Co.	Mechanic for the same Co.



Dramatics



RWC

SENIOR PLAY CAST



SYNOPSIS

When Fred Hastings spends more money than his parents believe he is earning; when his friend Larry Madison attempts to get his chum out of hot water, and when an eccentric little lady of eighty decides to play basketball, any attempt at trying to preserve the sanity of other casual observers becomes futile.

Fred's mother, Cora, is planning a birthday party for Fred's girl, Nancy, but when two strangers beautifully feminine, appear, in the persons of Gloria Patterson and Lois Corwin, the plot thickens, indeed. Fred is doomed; his job as model for Glamour Girl Cosmetics is about to be revealed. But leave everything to Larry; Larry insists. Gilbert Hastings, Fred's father, is furious when he learns of Fred's modeling job. Nancy isn't sure how she feels about it; Julie Tucker's chief concern is being able to keep the puppy Larry has bought for her on the installment plan. And that's when Melinda Whipple, that wiry bundle of energy, eighty years strong, appears.

The birthday party? It turns out to be something slightly less than an open-house affair, with a Mr. Danbury looking for local television talent, Bill Sterling looking for his girl, and Melinda Whipple looking for enough space in which to make a basket.

CAST AND CREW



Fred Hastings, all-conference basketball star	Arthur Bell
Cora Hastings, in her late forties	Thelma Creese
Gilbert Hastings, loyal husband and father	Robert Ketner
Nancy Graham, a girl of seventeen	Phyllis Klingler
Larry Madison, energetic senior	Edward Gobrecht
Julie Tucker, a breezy, talkative girl	Barbara Yingling
Gloria Patterson, a beautiful young girl	Barbara Yingling
Melinda Whipple, little lady of eighty	Cleda Greenawalt
Lois Corwin, young business woman	Peggy Foust
Mr. Danbury, a promoter and showman	Robert Craig
Bill Sterling, a bill collector	Raymond Spirnock

STAGE MANAGERS

Bill Logue

Wilbur Van Zandt

Bill Asbridge



Music



RSC

OPERETTA



CAST

Mrs. Fairfax Phyllis Klingler
 Dolly Fairfax Thelma Creese
 Mrs. Overcash Peggy Ditty
 Olivette Overcash Mildred Shaner
 Oscar Gushington Robert Ketner
 Augustus Gushington Edward Gobrecht
 Phoebe Gushington Barbara Yingling
 Princess Angeles Cleda Greenawalt
 Rosika Nancy Brown

Pianist

Nancy Ashbaugh

Prince Fortunatas David Yingling
 Rupert Larry Ashbaugh
 Gilbert Hunter Arthur Bell
 Cornelius Calvert Robert Craig
 Bruce Cartwright William Logue
 Dale Beaumont John Novak
 Vanessa Van Millions Deanna Reed
 Teresa Tre Billions Mary Jane Edinger
 Geraldine Gottrocks Peggy Foust

Director

Mr. A. J. Colonna

Our Operetta this year told of the exclusive and fashionable resort of Newport back in the "gay nineties." Wealthy socialites brought their children in hopes of arranging suitable marriages, suitable, that is, to the parents.

Mrs. Regional Fairfax, trying to arrange a marriage between Dolly, her daughter, and Augustus (Gussie) Gushington, the son of Oscar Gushington, a wealthy Hunter, a hardware merchant. Mlle. Claudine helps Gilbert and Dolly to deceive Mrs. Fairfax in hopes of getting her approval of their marriage. Mlle. Claudine, who is really Princess Angela of Superba, tries to help Dolly and Gilbert by having Gilbert impersonate Prince Fortunatas of Elysia. Things really start humming when the real prince shows up. Phoebe Gushington, Oscar's lifeless daughter refused to marry the prince. Gilbert's disguise is uncovered, but the Prince is forgiving, for he has found the Princess and they are to be married. Gussie fools everyone and marries Rosika, the Princess's maid. Dolly blackmails her mother with the information of her sister's marriage to a miller. Dolly and Gilbert are to be married with Mrs. Fairfax's blessing. To comfort each other Mrs. Fairfax and Mr. Gushington decide to get married.

SENIOR MIXED CHORUS



Front row, left to right: Barbara Yingling, Mildred Shaner, Norma Fleming, Deanna Reed, Marlene Wetzel, Bob Ketner, Bill Logue, Leroy Burrell, Roger Brown, Nancy Ketner, Phyllis Klingler, Mary Jane Edinger, Nancy Brown, Josie Landers, Judy McElhattan, Allen Ingling.

Middle row, left to right: Nancy Foust, Maxine Texter, Janice Ditty, Peggy Ditty, Thelma Creese, John Murray, John Novak, Bill Burrell, Marie Hilliard, Janice Deal, Mary Lee Brison, Guyma Greenawalt, Carole Schaefer, Malvene Creese, Susan Lemmon, Art Bell, David Yingling, Mr. Albert Colonna.

Back row, left to right: Valerie Graff, Sonja Master, Louise Sheffer, Clede Greenawalt, Bob Craig, Ed Gobrecht, Charles Rhoades, Peggy Foust, Judy Lieberum, Vivian Fair, Dorothy Shreffler, Gary Eartow, Roger Hertz, Jim Edwards, Tom Lieberum.

Our senior chorus this year under the direction of Mr. Albert Colonna, had a very successful year.

Members of the chorus attending District Forensic were Girls' Trio; Thelma Creese, Judy McElhattan and Clede Greenawalt; Mixed Quartet, Art Bell, Phyllis Klingler, Valerie Graff, Ed Gobrecht; Soloist competing at Clarion were, Ed Gobrecht, Phyllis Klingler, and Thelma Creese. Competing in State Forensic were Thelma Creese and Mixed Quartet. Our accompanist was Nancy Ashbaugh. She was indeed an asset.

Our operetta this year was "Old Fashioned Girl." It was a two act story with delightful music and a cast consisting of the juniors and seniors of the chorus.

Our Spring Concert this year was a great success. Our numbers were: "The Bell Song," "I Believe," "Lift Up Your Hearts," and "Vesper Hymn."

Our accompanists this year were Nancy Ashbaugh and Judy Lieberum.

To the Mixed Chorus of '56 we wish many great singers and many wonderful times.



GIRLS TRIO

This group has been very busy entertaining at various gatherings. They went along to Clarion and got excellent rating. We will indeed miss the alto, Cleda, and our second soprano, Thelma. We wish the Trio of '56 lots of luck.

Cleda

Judy

Thelma



Ed Gobrecht

Valerie Graff

Phyllis Klingler

Art Bell

These four students are to be congratulated on their fine accomplishments at Clarion and York. This group is composed of three seniors and one sophomore. We will miss the firm voices of Phil., Ed and Art next year.

BAND AND ORCHESTRA



Trumpets

Gary Bartow
 Danny Fichte
 Tom Lieberum
 Bill Vensel
 David Yingling

Saxaphones

Mark Fichte
 Valerie Graff
 Karen Murray
 Nancy Vasey
 John Summerville

Altos

George Edinger

Bass

John Summerville

Clarinets

Carol Creese
 Mary Jane Edinger
 Gwendolyn Jordon
 Judy Lieberum
 Hazel Morgan
 Alice Mae Perkins
 Leonard Shoup
 Ronald Shoup
 Nancy Smith

Baritones

Sonja Master
 Ken Shoup

Bass Drum

Gary Lieberum

Director

Mr. Fred Colonna

Snare Drums

Louise Sheffer
 Robin Murray

Trombones

Nancy Ashbaugh
 Edward Gobrecht
 Roger Herzel

Cymbals

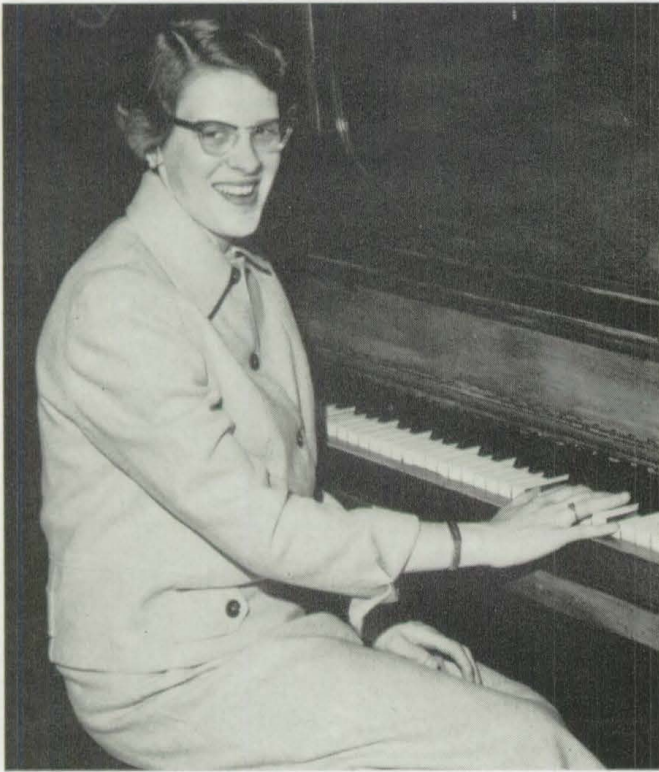
Gary Ashbaugh
 Lennis Berlin

Piano

Nancy Ashbaugh

The band and orchestra with its 30 members under the excellent direction of Mr. Fred Colonna presented a concert on April 22 and went to Cooks Forest on May 9. We wish this growing band and orchestra continued success.

AT THE KEYBOARD



Nancy Ashbaugh

Our pianist, Nancy Ashbaugh, has played for all the high school musical assemblies during all four of her years in high school. She has played for all our operettas, the boys' quartets, the girls' trios, and the choruses since her freshman year. Nancy has gone to the district forensics at Clarion to play for our school entrants for four years. She went on to the state forensic finals in her freshman year.

SHE'S SUPERIOR

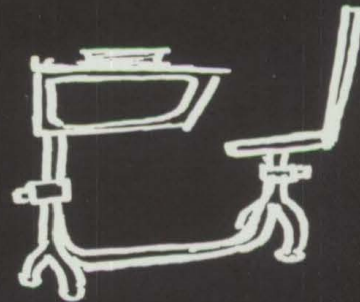
Our alto soloist, Thema Creese, received a superior rating, which is the highest possible rating given, at the District Forensic contest held annually at Clarion, Pa. After attaining this, she went on to compete in the state finals at York, Pa., and received a superior rating there, also.

Thelma is the first student from St. Petersburg to win at both places. Congratulations!



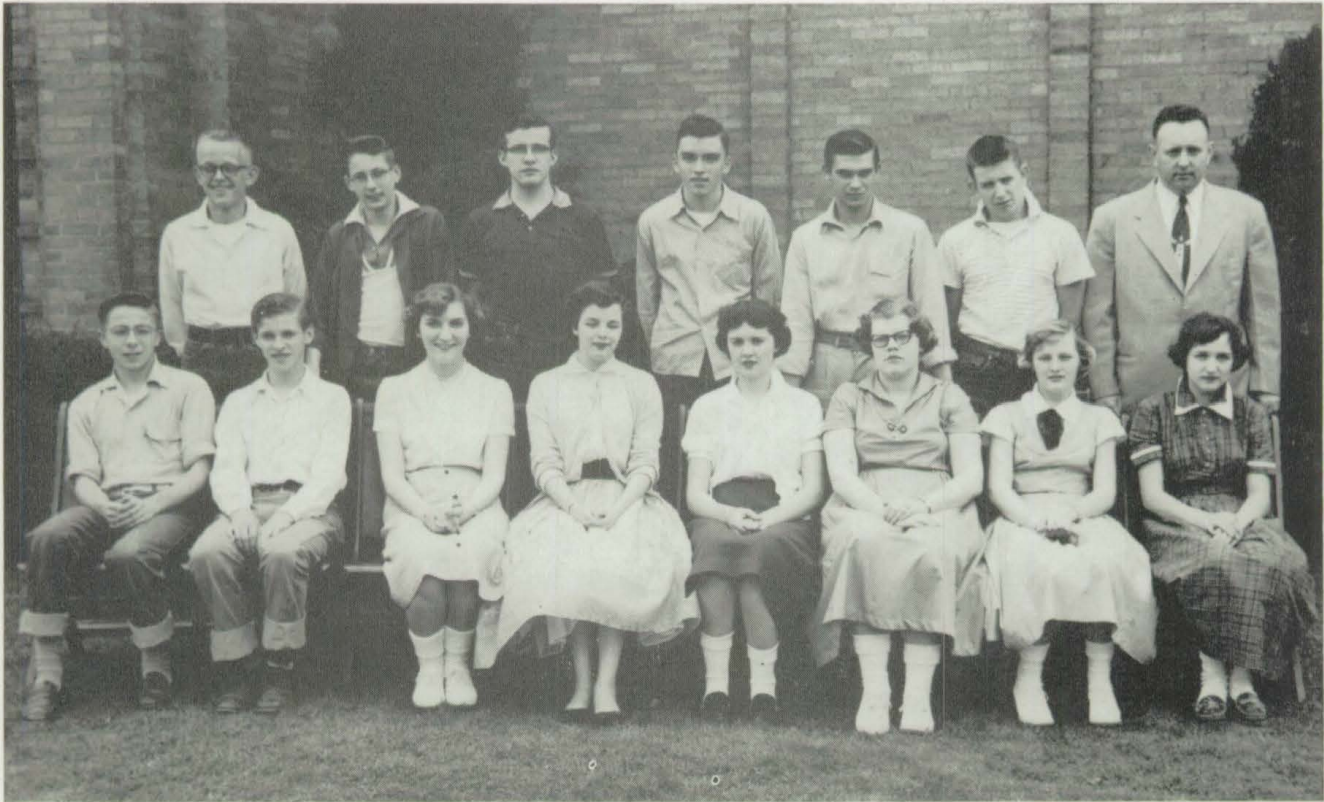
Thelma Creese

Under Classmen



RWC

JUNIORS



First row, left to right: Bill McCanna, John Wood, Deanna Reed, Joyce McBride, Mildred Shaner, Caroline Livermore, Mary Jane Edinger, Peggy Ditty.

Second row, left to right: David Yingling, Dick Beichner, Larry Ashbaugh, Ken Shoup, Ken Hunsberger, Bill Burrell, Mr. Helmtoller.

JUNIOR CLASS HISTORY

Freshman Year

Skating Party Valentine Party
Square Dance

President Mildred Shaner
Vice President Joyce McBride
Secretary Mary Jane Edinger
Treasurer Larry Ashbaugh
Sergeant At Arms Bob Flick

Sophomore Year

Skating Party
Ham Raffle

President Larry Ashbaugh
Vice President Joyce McBride
Secretary Mary Jane Edinger
Treasurer Dick Beichner
Sergeant At Arms Bill Burrell

Junior Year

Turkey Raffle Luncheon
Newspaper Two Movies
Prom

President Dave Yingling
Vice President Larry Ashbaugh
Secretary Mary Jane Edinger
Treasurer Dick Beichner
Sergeant At Arms Bill Burrell

SOPHOMORES



First row, left to right: Susan Lemmon, Mary Lee Brison, Judy McElhattan, Guyma Greenawalt, Valerie Graff, Louise Sheffer, Malvene Creese, Nancy Foust.

Second row, left to right: Nancy Ketner, Russ Cratty, Roger Brown, Joy Landers, Carlos Klingler, John Summerville, Jim Edwards, Johanna Smith, Mrs. Helmintoller.

SOPHOMORE CLASS HISTORY

Freshman Year

Luncheon

President	Susan Lemmon
Vice President	Nancy Ketner
Secretary	Valerie Graff
Treasurer	Mary Lee Brison
Sergeant At Arms	John Summerville

Sophomore Year

Skating Party	Luncheon
Bake Sale	Record Hop
Ham Raffle	

President	Louise Sheffer
Vice President	Valerie Graff
Secretary	Guyma Greenawalt
Treasurer	Mary Lee Brison
Sergeant At Arms	Johanna Smith

FRESHMEN



First row, left to right: Janice Deal, Janice Ditty, Vivian Fair, Eleanor Sullivan, Dorothy Shreffler, Josie Landers, Judy Lieberum, Sonja Master.

Second row, left to right: Carole Schaefer, Marilyn Pavlic, Marlene Wetzell, Daryl Watson, John Deloe, Sheldon Rankin, Chuck Fleming, Charles Rhoads, Mr. Penone.

Third row, left to right: Gary Page, Carl Jackson, Leroy Burrell, Clifford Shreffler, Gary Bartow, Roger Herzel, John Ganoe.

FRESHMAN CLASS HISTORY

Two Skating Parties

Two Luncheons

Candy Sale

Movie

President	Roger Herzel
Vice President	Sonja Master
Secretary	Josie Landers
Treasurer	Judy Lieberum

TOP BRASS

SENIOR CLASS OFFICERS

RAY SPIRNOCK	President
ART BELL	Vice President
NANCY BROWN	Secretary
BILL ASBRIDGE	Treasurer
FRED MILLER	Sgt. At Arms
S. PAUL TOY	Class Advisor



JUNIOR CLASS OFFICERS

DAVID YINGLING	President
LARRY ASHBAUGH	Vice President
MARY JANE EDINGER	Secretary
RICHARD BEICHNER	Treasurer
WILLIAM BURRELL	Sgt. At Arms
JAMES HELMINTOLLER	Class Advisor

2nd LIEUTENANTS

SOPHOMORE CLASS OFFICERS

LOUISE SHEFFER President
 VALERIE GRAFF Vice President
 GUYMA GREENAWALT Secretary
 MARY LEE BRISON Treasurer
 JOHANNA SMITH Sgt. At Arms
 TERESE HELMINTOLLER Class Advisor

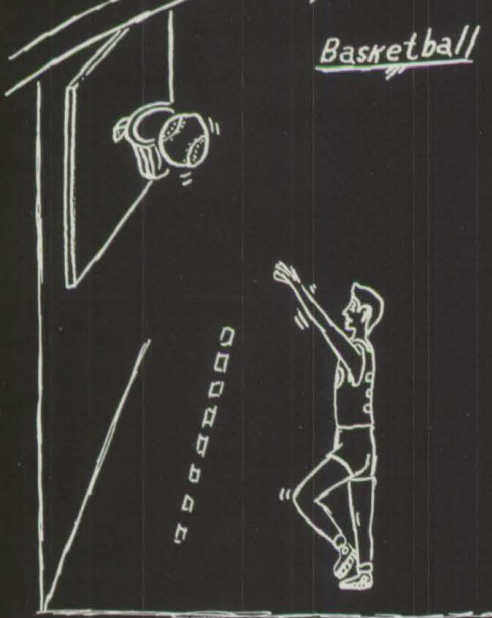


FRESHMAN CLASS OFFICERS

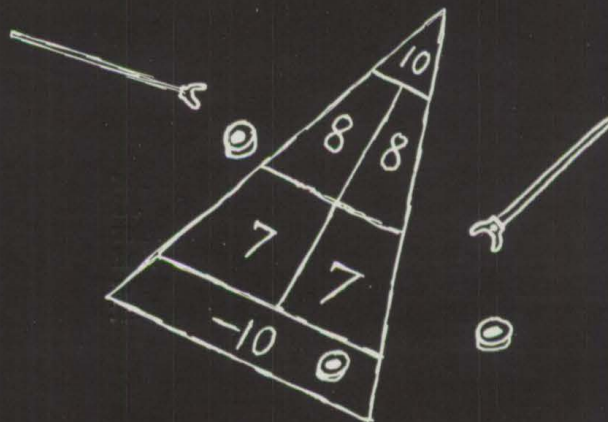
ROGER HERZEL President
 SONJA MASTER Vice President
 JOSIE LANDERS Secretary
 JUDY LIEBERUM Treasurer
 MR. PENONE Class Advisor

Sports

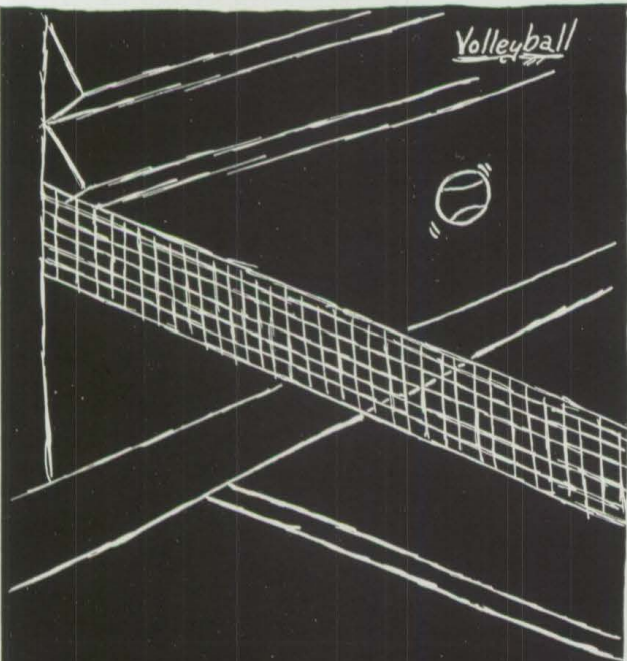
Basketball



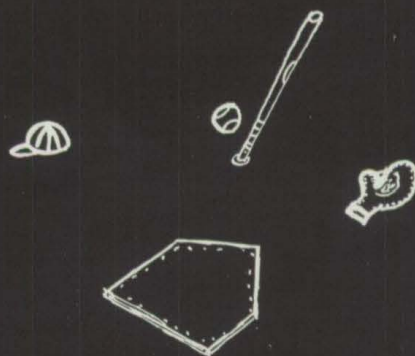
Shuffleboard



Volleyball



Softball



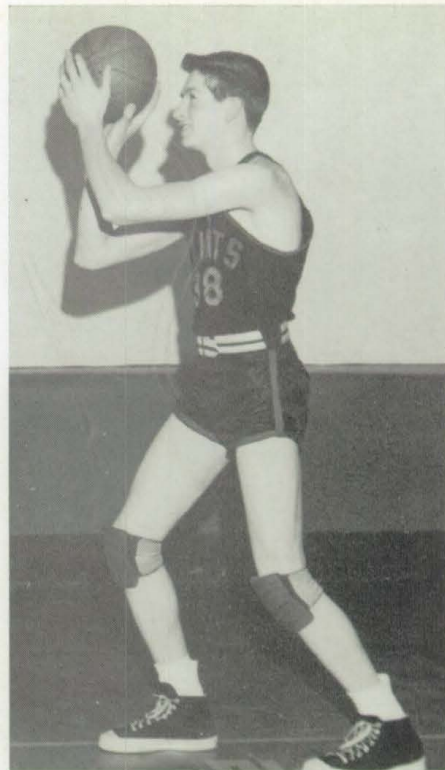
RWC

BIG SHOTS



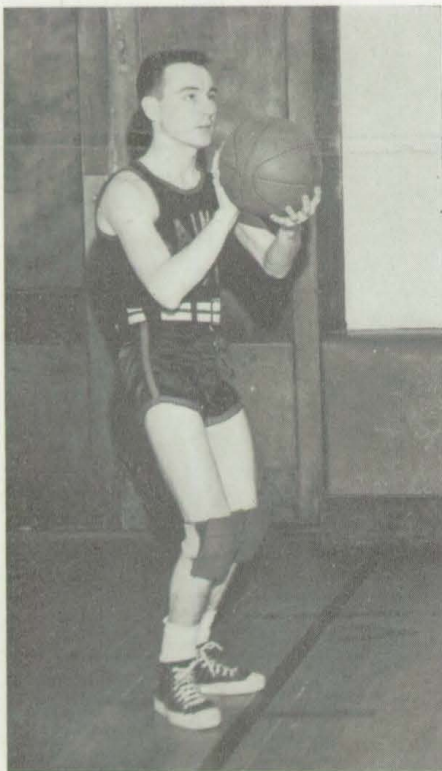
COACH DICK HELMINTOLLER

Mr. Helmintoller has been our coach for seven years. He has been well liked by all the boys who have played for him. Under his coaching ability we have always had teams that would never give up, whether they won or lost. We wish him the best of luck in future years.



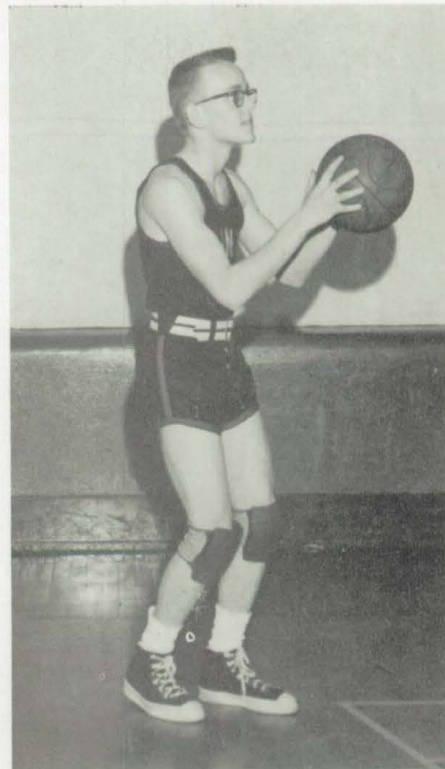
RAY SPIROCK (TEX)

Ray is that tall, lanky, senior center who has been rebounding all year. He was honored by being elected by his teammates as honorary Varsity Captain this year. Good luck in the coming years, Ray.



BILL ASBRIDGE (REBEL)

Bill, who is a senior, was guard this year on the varsity team. He comes from Memphis, Tenn., and was liked by his teammates. He deserves a lot of credit for his basketball ability, and was a big asset to this year's team. Good luck in future years, Bill.



DAVE YINGLING (PING)

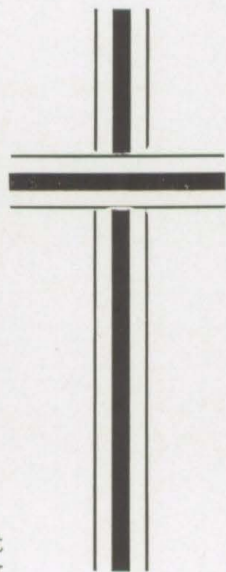
Dave is only a junior and has another year of basketball ahead of him. He is always in there trying and that makes a good player. Look for Dave on the floor next year, because he will be a great help to our team. Good luck, Dave.



BILL BURRELL (BUTCH)

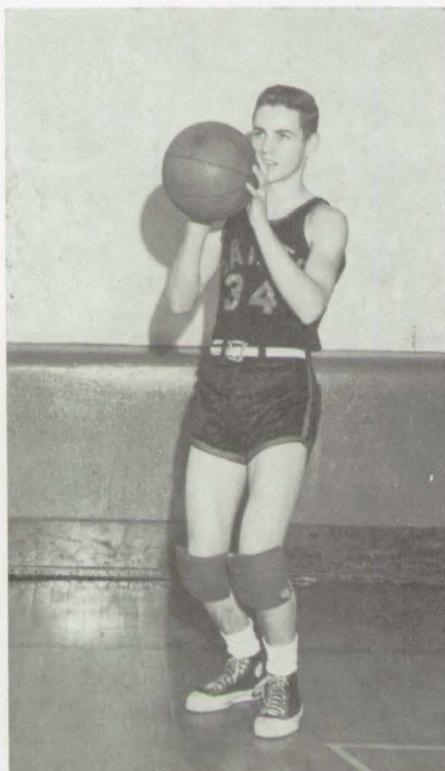
Bill is a junior and deserves a lot of credit for his fine ball playing this season. Look for Bill on the team next year for he will be one of the main stays. Good Luck, Bill.

MORE BIG SHOTS



GARY PAGE (SCRAPPY)

Although Gary is only a freshman, he played varsity ball most of the season. We can be thankful that Gary will be back in future years to play ball for our team. Good Luck, Gary.



RUSS CRATTY (GOAT)

Russ, who is only a sophomore, saw a lot of action as a varsity ball player. He was a great asset to the team. Russ will be attending Parker High School next year. Our loss will therefore be Parker's gain. Good Luck, Russ.



JIM EDWARDS (JIM)

Jim is another sophomore who saw plenty of action as a varsity player this year. He was a great asset to our team, and we can be thankful that he will be back in future years to play for us. So good luck in the future, Jim.



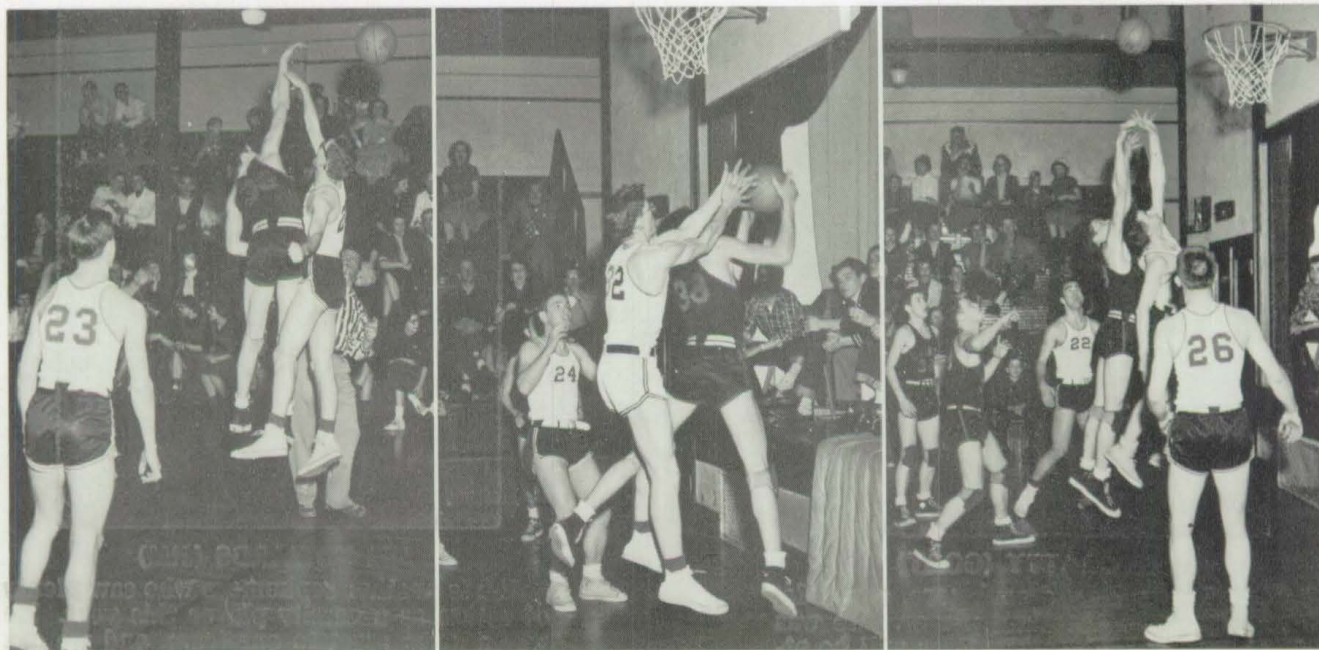
BILL SHREFFLER
And **ED GOBRECHT**
Managers

All Present and Accounted For

Bill and Ed were those two senior boys who were always ready to help the players at any time. These two boys worked hard all season, and their work was appreciated by all the team and also by our coach. Both of these boys will be graduating this year and will be hard to replace on next year's team.

We wish these boys continued success in all that they do in the coming years.

ACTION





Upper Picture—J. V. & Varsity Squad

Upper Row:
 Bill Shreffler, Mgr.
 Bill McCanna
 Carlos Klingler
 Cliff Shreffler
 John Summerville
 Leroy Burrell
 Gary Bartow
 Ed Gobrecht, Mgr.

Lower Row:
 Russ Cratty
 Bill Burrell
 Gary Page
 Ray Spirnock
 Dave Yingling
 Bill Asbridge
 Jim Edwards

Lower Picture—Junior High Squad

Upper Row:
 Roger Herzal, Mgr.
 Jimmy Henderson
 Bill Peterson
 Buzz Murray
 Daryl Watson
 John Livermore
 Tom Lieberum

Lower Row:
 Gary Bartow
 Dick Ashbaugh
 Gary Page
 Cliff Shreffler
 Leroy Burrell
 Frank Sullivan



THEY GAVE THE GAMES A CHEERY TOUCH



We had one of the finest groups of cheerleaders in the county this year. Four senior girls: Nancy Ashbaugh, Nancy Brown, Barbara Yingling, Cleda Greenawalt, and two junior girls: Mary Jane Edinger and Peggy Ditty made up the Varsity team.



J. V.: Valerie Graff, Mary Lee Brison, Guyma Greenawalt, Josie Landers, Sonja Master, Dorothy Shreffler.



JR. H.: Nancy Vasey, Karen Murray, Judy Lieberum, Eleanor Sullivan, Linda Master, Sandra Deal, Becky Ryberg.



YEAR BOOK STAFF

Co-Editors

Raymond Spirnock
Arthur Bell

Sports

Charles Deloe
Bill Asbridge

Music

Nancy Ashbaugh
Maxine Texter

Editorials

Phyllis Klingler
Edward Gobrecht

Class History

Cleda Greenawalt

Class Will

Nancy Brown
Norma Fleming

Art

Bob Craig

Pictures

Fred Miller
Barbara Yingling

Class Prophecy

Bob Craig
John Murray
Bob Ketner

Advertising

Raymond Spirnock
Arthur Bell
Bob Ketner
Fred Miller
Bob Craig

Dramatics

Mike Chechak
Wilbur Van Zandt

Proof Reading

Art Bell
Ray Spirnock
Mr. Stewart
Mr. Toy

Sales and Publication

Bob Ketner
Peg Foust
Cleda Greenawalt
Chuck Deloe
Bill Asbridge

Typists

Allen Ingling
Maxine Texter

DO YOU REMEMBER?

1. Bill A.—your nights back at Mary Jane's?
2. Nancy A.—the night we had our senior pictures taken?
3. Art B.—the day you ate Craig's "special" Mallo cup?
4. Nancy B.—the day you helped Craig put glue in a certain "Mallo Cup?"
5. Bob C.—your ride to Blue Rock with Ketner?
6. Cleda G.—the night you played basketball "on stage?"
7. Ray S.—the time you went to sleep in Chem Class and fell out of your seat.
8. Phyllis K.—the night that Jack and Dean both showed up?
9. John M.—the chicken you and Logue "captured" and cooked?
10. Bill L.—that "class" in the supply room?
11. Thelma C.—during Senior Assembly practice the safety pin you had to borrow from Millie?
12. Barb Y.—the cops you hit with the cider apple?
13. Peg F.—the many nights of play practice?
14. Wilbur V.—the calendar you kept during your Senior year?
15. Maxine T.—the day you sat in a pail of water?
16. Allen I.—the day Logue wore your sneakers?
17. Chuck D.—the day you got "painted up"?
18. Fred M.—how to fix a Chevy transmission?
19. Mike C.—the trip to Cook Forest in Novak's Ford?
20. John N.—your ride through the "posie patch"?
21. Ed G. —yours and Valerie's walk across York, Pa.?
22. Bill S.—the time Ingling "borrowed" your nickel?
23. Bob K.—the Black Chevy that chased you to Blue Rock?
24. Norma F.—the day you were so willing to take the typing final?
25. Mr. Penone—the night Mr. Stewart shot you with a water pistol?
26. Mrs. Helmtoller—the "oranges?"
27. Mr. Helmtoller—the "wheels" of the class of '55?
28. Mr. Toy—that "Christmas Kiss" under the mistletoe?
29. Mr. Stewart—what Mr. Penone said when you shot him with the water pistol?

BASKETBALL BANQUET

The annual banquet honoring the basketball and cheerleading squads was held on Thursday evening, March 31, in the Foxburg Library.

Mr. Howard Panton acted as toastmaster and the main address of the evening was delivered by Mr. Robert Smiley, basketball coach of Slippery Rock Teachers College.

Mr. Budd B. Stewart, Supervising Principal, gave a brief talk after which Richard Helmintoller spoke briefly and presented sweater and letter awards to members of the basketball squad.

Mrs. Helmintoller, cheerleading coach, then gave a few remarks and presented sweater and letter awards to the cheerleaders.

All the senior players and cheerleaders spoke briefly and Mr. Donald Lynch spoke for the sponsors.

The program was brought to a close with the singing of the school song.

CROWNING OF THE PROM KING AND QUEEN



Our Prom theme this year was "Starlight". The juniors had the auditorium decorated with silver and gold stars and a lovely sky of blue.

The above picture shows the Prom King, William Logue, and his Queen, Peggy Foust, with their attendants, Nancy Brown and Bill Asbridge. The Flower Girl was little Miss Nancy Wood and the Crown Bearer was Master Jimmy Shaner.

After the crowning everyone had a wonderful time dancing to the music of Freddie Elwood and his orchestra from Kittanning, Penna.

Now We Are Graduates

BACCALAUREATE

SUNDAY, MAY 29, 1955

8:00 P. M.

*Processional:

*Hymn: "Holy, Holy, Holy" . . . Congregation

*Invocation . . . Reverend Everett F. Spring

Mixed Octet: "We Thank Thee Lord"—Tkach

Scripture: Psalms 23, 24 . . . Reverend Everett F. Spring

Girls Trio: "We Sing Thy Praise"—Bortniansky

Sermon: "Green Pastures" . . . Reverend Loy Gobrecht

*Hymn: "Nearer My God To Thee" . . . Congregation

*Benediction . . . Reverend Everett F. Spring

*Recessional

Pianist: Judy Lieberum

*The Congregation will please stand.

COMMENCEMENT

TUESDAY, MAY 31, 1955

8:00 P. M.

Orchestra: "Here Comes The Band"—Scott

Orchestra: "Class Colors"—Berger

*Processional: "Dawn of Peace"—D'Ippolito

*Invocation . . . Reverend Loy Gobrecht

Mixed Quartet: "The Halls of Ivy"—Russell-Knight

Salutatory Address: "Our Future in the

Air Age"

Arthur Bell

Alto Solo: "A Perfect Day"—Bond

Thelma Creese

Valedictory Address: "Keep Your Balance" Edw. Gobrecht

Orchestra: "The Gypsy Festival"—Hayes

Commencement Address:

"Education for What?" . . . John R. Edwards, Jr.

Dean of Men, Westminster College
New Wilmington, Pa.

Presentation of Diplomas . . .

Budd B. Stewart

Supervising Principal

Presentation of the American Legion Essay

Award . . .

Robert E. Shirey, Commander

Eugene L. Klingler, Chairman Miller-Rankin Post No. 636

*Benediction . . .

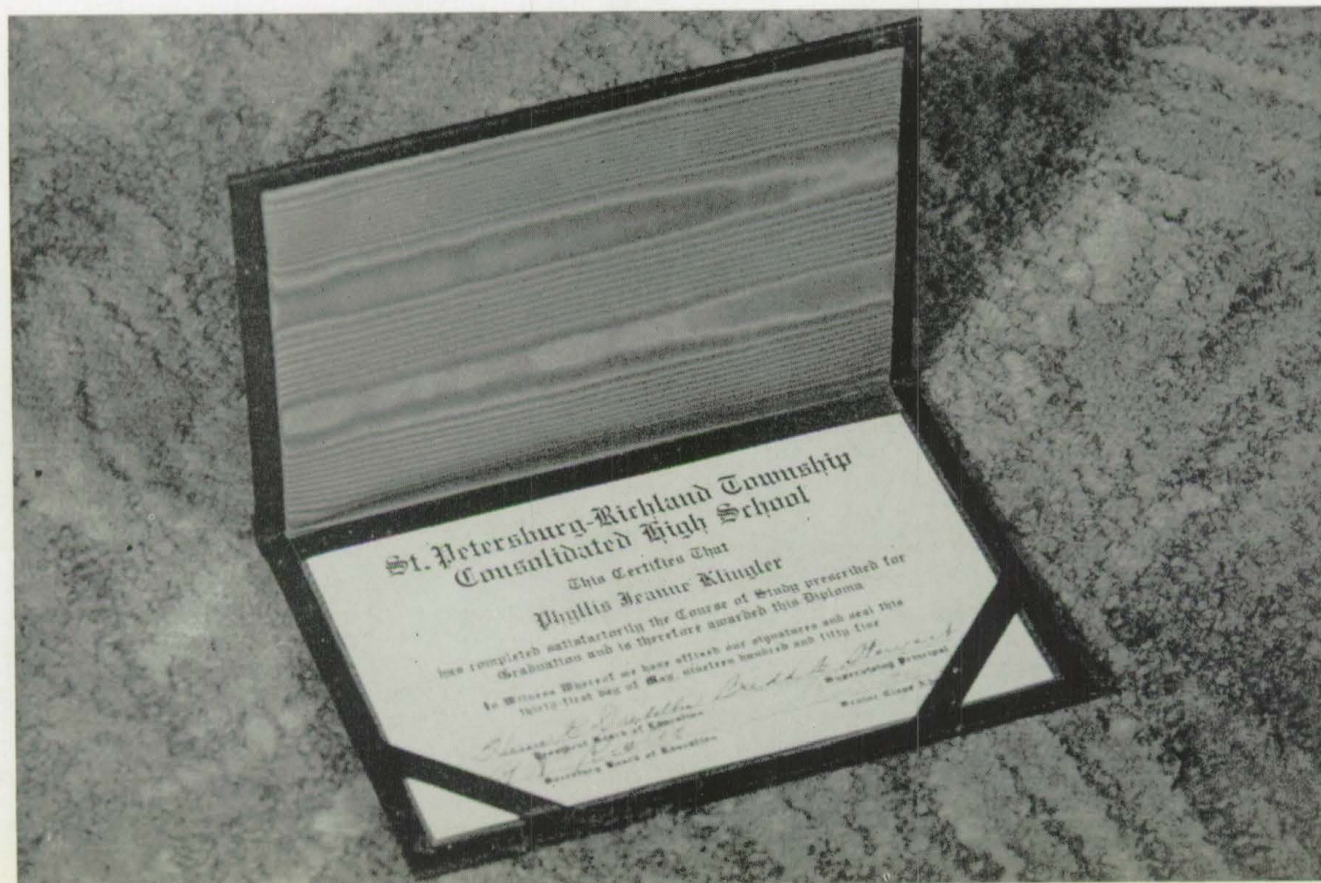
Reverend Loy Gobrecht

*Recessional: "Inauguration March"—McCaughey

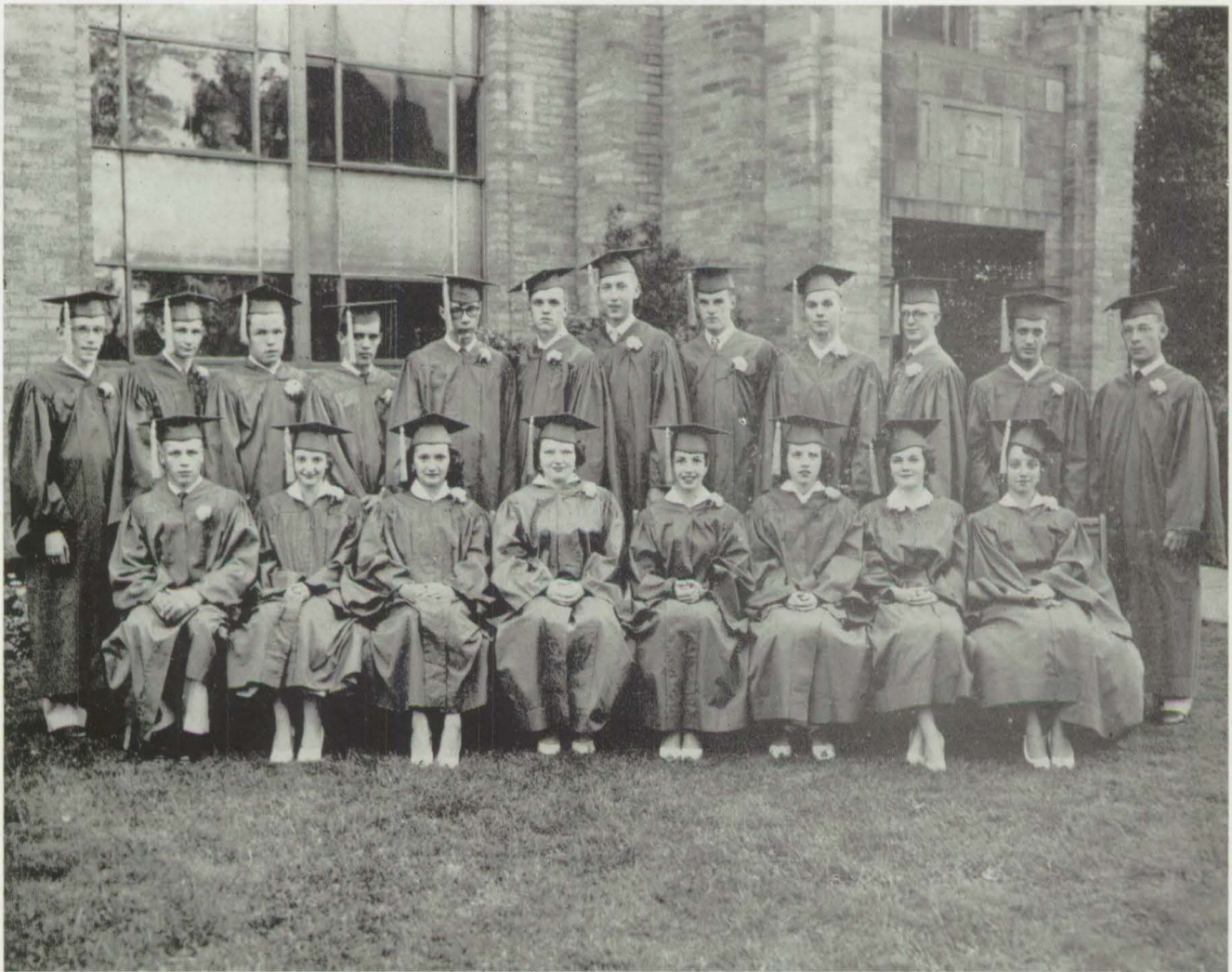
*The Congregation will please stand.

Graduates will assemble in the rear of the auditorium after the recessional to be greeted by parents and friends.

Our Goal Achieved



VETERANS NOW



SENIOR CLASS OF '54

Front row, left to right: James Barlett, Betty Matthews, Dolores Watson, Mary McGinnis, Mary Ellen Shreffler, Mary Anna Eakman, Shirley Parker, Donna Burrell.

Back row, left to right: Bob Shoup, Homer Ditty, Ken Lemmon, Tom Bowser, Darwin White, Dick Konkle, Dave McQuiston, Steve Blackford, John Edwards, Terry Nevel, John Preston, Ralph Logue.

The Senior Class of 1955 is grateful to this group of former students, since they contributed their help toward this yearbook in the form of the advertising money they had collected.

Seven of the members are now attending college or specialized schools. Four members are now in the service; three are in the Marines and one in the Air Force. Five are now married. This group has certainly gone a long way as a whole in the comparatively short time they have been out of school. The Senior Class of 55 takes this opportunity to wish this group of fine people still more success in any field they may follow.



The Good Ole Days

PICTURE ON PAGE 28

1. Hula Dancer?
2. Some Fish!
3. State Trooper
4. Cute Couple!
5. "I don't see them yet."
6. "Ten' hut!"
7. Windblown.
8. "Darling!"
9. "Don't Come Any Closer!"
10. "Have You Had Enough?"
11. "Come Here, Baby!"
12. There'll be some changes made.
13. "Shucks, No Snow!"
14. Starting Early.
15. Carefree
16. Lonesome
17. Battersup!
18. "Hmm, what have we here?"
19. Babe Ruth the 2nd.
20. "No Sir, it wasn't me."
21. "Race you!"
22. Another soldier awready?
23. Forlorn.
24. "No, it's me!"
25. "I'm listening."
26. "I want my dinner."
27. "Well, it's stopped raining!"
28. "Who's there???"
29. "You can't catch me!"
30. "Would you look at that!!"
31. "That is right, isn't it??"
32. "We're not goin' back, either!"
33. Stubborn!

Way Back When

PICTURE ON PAGE 24

1. "Ummm, Good!"
2. Laboring?
3. Ah, Yes!
4. So there!
5. "Seniors!!"
6. Right on time.
7. And there you are!
8. Duhh!
9. "Here I Am!"
10. No money for gas.
11. Caught in the Act!
12. Concentration!
13. The Blue an' the Grey
14. Ole' Faithful
15. Cold?
16. Wow!
17. Ah Hah!
18. "Care to join us?"
19. "Ahh, Comfort!"
20. "Who, us??"
21. Snort!
22. "We're ready if you are."
23. "Don't drop it!"
24. Well!
25. Tight fit.
26. Oh, Dad!
27. Farmer in the Dell.
28. Lucky!!!
29. "Man in the Raincoat!"
30. Hmm, which one has the Toni?
31. Ride 'em Cowboy!

Grades



22/1

Past Halfway Mark

GRADES SEVEN AND EIGHT

First row, left to right: Rebecca Ryberg, Nancy Vasey, Linda Master, Alice Perkins, Beverly Milford, Sandra Deal, Georgia Fair, Nancy Rhoads, Barbara Clark.

Second row, left to right: Tom Lieberum, Bill Barlett, John Hunsberger, Donna Watson, Carolyn McCanna, Linda Cotton, Hazel Morgan, Janice Landers, Mrs. Fillman.

Third row, left to right: Mark Fichte, Bill Vensel, Stanley Fillgrove, Walter White, Richard Ashbaugh, Robert Murray, Frank Sullivan.



GRADES SIX AND SEVEN

First row, left to right: Gary Ashbaugh, Marilyn Milford, Gary Lieberum, Thomas McCanna, Sandra Rhoads, Dennis Dotterer, Gary Dee, Nancy Smith, George Edinger, Patricia Acquaviva.

Second row, left to right: Priscilla Wingard, Helen Sherman, Margaret Sullivan, Betty Brown, Bertha Deloe, Karen Murray, Sarah Wingard, Francine White, Gwendolyn Jordan.

Third row, left to right: Samuel Eakman, Lawrence McConnell, Lennis Berlin, Robert Konkle, Lloyd Johnson, Norman Brown, Douglas Vensel, Terry Ashbaugh, Leonard Shoup, Mrs. Potts.

Making Progress

GRADES FOUR AND FIVE

First row, left to right: Donald Jackson, William Wray, Dewayne Deloe, Jackie Dittman, George Madrigal, Kenneth Wetzel, Freddy Clark, Rudy Fair.

Second row, left to right: Janet Johnson, Karen Guntrum, Connie Rhoads, Effie Mae Ditty, Ronald Sherman, Dennis Shreffler, Robert Eakman, Sarah Morgan, Cleora Johnson.

Third row, left to right: Bonnie Dittman, Barbara Wingard, Betty Johnson, Sandra Nine, Janet Coleman, Patricia Rupert, Sandra Simpson, Dora Sheesley, Suzanne Deal, Judy Plunkard.

Fourth row, left to right: Ronald Shoup, Jay Dee Berlin, Jerry Durnell, Jackie Master, John Dittman, Ronald Eckelberger, John Wilson, Larry Shreffler, Lester Whitling, Miss Heeter.



GRADE THREE

Front row, left to right: Donna Eakman, Billy Ditty, Elizabeth Milford, Barbara Nevel, John Jordan, Faye Rhoads, Sammy Barlett, Martha Barracough, Avis Kinch, Ricky Jackson.

Middle row, left to right: Connie Konkle, Barbara McElroy, Susan Arkwright, Delores Deloe, Barbara Hunsberger, Mary Jane Sullivan, Gloria Deloe, Mae Fair, Vicki Burrell, Nancy Gross, Sandra Fleming.

Back row, left to right: Charlotte Van Zandt, Joe Landers, Eugene Durnell, Leroy Brown, Jimmy Van Zandt, Bennie Landers, Dale Clark, Carol Lewis, Mrs. Earle.

Off To A Good Beginning

GRADE TWO

First row, left to right: Billy Morgan, Donna Sheesley, Peggy Shoup, Ruth Myers, Linda Altman, Janet Shoup, Jack Klingler, Billy Earle, Edna Downing, Helen Sullivan, Linda Deal.
 Second row, left to right: Patty Brown, Martha Wiingard, Mary Ward, Carolyn Emery, Ruby Dittman, Connie Clark, Reita Logue, Karen Wetzel, Peggy Wilson, Miss Jones.
 Third row, left to right: Mike Shreffler, Bobby Simpson, Dennie Eckelberger, Bobby Gates, Jimmy De Hart, Larry Myers, John Shaner.



GRADE ONE

First row, left to right: Lloyd Brown, Keith Sherman, Ronnie Barraclough, Jimmy Shaner, Ronnie Klingler, Mike Claypool, Ivan Deloe.
 Second row, left to right: Kathy Shoup, Betty Kautchick, Arlene Rhoads, Earla Myers, Connie Wingard, Connie Shreffler, Karen Clark, Donna Fulk, Jane Arkwright, Linda Ingling, Nancy Woods.
 Third row, left to right: Danny Terwilliger, Tommy Best, Joe Stewart, Bonnie Wolfe, Joan Coleman, Mabel Fleming, Linda McHenry, Carol Ryberg, Barbara Ward, Mrs. Jordon.
 Fourth row, left to right: Ricky Deal, Harry Jackson, Terry Clark, Allan Stellman, Paul Schacht, James Miller, Leroy Johnson, Steven Stewart, Keith McHenry, Dean Kinch.

THE WINNER

This pretty sophomore miss represented St. Petersburg-Richland High School exceptionally well at the Science Fair at Clarion on April 16. She received second prize in the Mathematics division for her fine designs constructed in Mr. Toy's Plane Geometry Class. As you can see, that is really fine work with the compass.

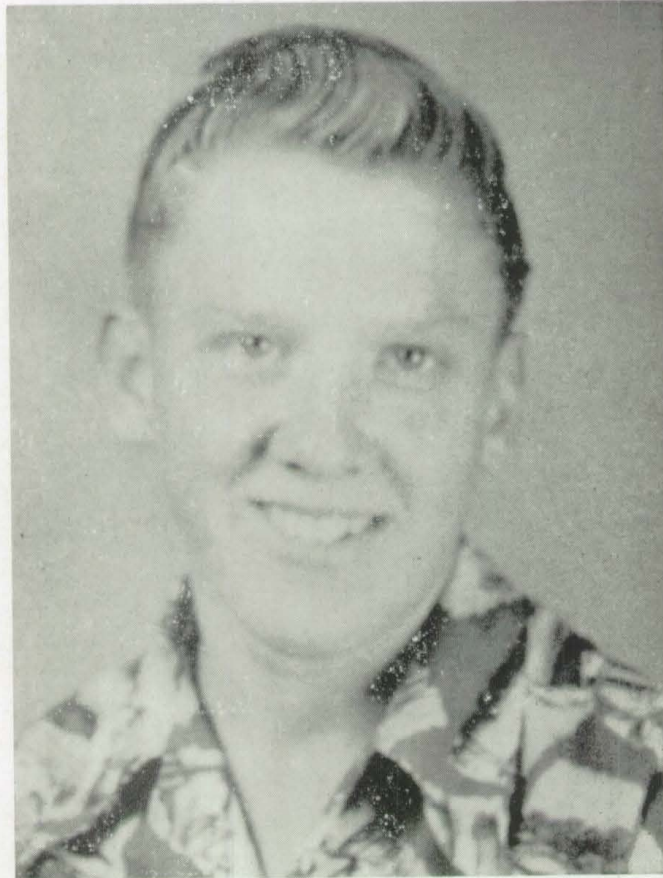


LIBRARIANS ALL

MIXED CHORUS JUNIOR HI



IN REMEMBRANCE



Lloyd Wilson
"RED"

Red was gentle, sweet, and kind,
A nicer boy you couldn't find,
He was witty, merry, and never blue,
He always had a kind word for you,
So, I think, we all agree
A nicer boy there couldn't be.

He stood straight as an oak tree,
But nose not in the air,
If you ever needed help, Red was always there,
He was liked by all kids and grown-ups as well,
There is much more about Red that I could tell,
But, I think, I have stressed the idea quite well,
And there's no doubt in our mind, he will go to Heaven, not Hell

So, weep not my friends,
Dry the tears from your face,
For Red is going to a much better place,
Where the sun always shines, and the streets are of gold,
His happiness there will be more than can be told,
So, cry not this stormy March day,
For Red is not dead, he has just gone away.

By John Ganoe

GRADUATES FROM THE ST. PETERSBURG - RICHLAND TOWNSHIP HIGH SCHOOL 1897 TO 1955

1897

S. R. CRAIG, Principal

Laura Craig
Georgia Tulloch
Rachel Collner
John Bissell
Carrie Moore
Ethel Gates

1898

S. R. CRAIG, Principal

Nettie Ashbaugh
Pearl Fillman
Grace Schell
Peal Conner
Cora Davis
Effie Neely
Rena Dittman
Jessie Ritts

1899

S. R. CRAIG, Principal

Pearl Matthews
Sadie Clark
Anna Belle Bortz
Della Bissell
Esma Foust
Effie Buck
Grace Ashbaugh
Warren Myers
May Klingler
Lucy Allen

1900

M. M. RODGERS, Principal

Ruth Armour
Ada Bostaph
Cora Dittman
Myrtle Hutchison
Lydia Latshaw
Irene Neely
Fred Neely
Verne Shoup
Arthur Smith
Claude Slicker
Anna Kirschner

1901

M. M. RODGERS, Principal

Ford Summerville
Bess Craig
Irene Kirschner
Zoe Schell
Lester Neely
Birdie Edinger
Clarence Neely

1902

J. M. MYERS, Principal

Mae Foust
Orpha Slicker
Flo Bissell

1903

G. G. WILSON, Principal

Mabel Ashbaugh
Susie Gates
Harry Jordon
Effie Shriver
Margaret Soliday
Frances Jackson

Bert Shoup
Welthy Elder
Jessie Heeter

1904

G. G. WILSON, Principal

Carlos Klingler
Ida Barger
William Stewart
Bernice Armour
Edna Clark
Raymond Neely
Jennie Potts
Elizabeth Moore
Violet Neely
Beatrice Toy

1905

G. G. WILSON, Principal

Lottie Barger
John Boocks
Blanche Sheely
Mary Gates
Raymond Vensel
Irene Baker
Nina Latshaw
Hallie Duve
Rhoda Bell
Irene Ritts
Marion Wilson

1906 did not have a graduating class.

1907

E. E. BROWN, Principal

Sara Best
Willis Dittman
Norman Jackson
Beneta Griffin
Will Best
Louise Jones
Lillian Hagan

1908

E. E. BROWN, Principal

Harrison Wellman
Anna Brosnan
Beulah Will
Lester Cope
Ernest Slicker
Marjorie Edinger

1909

W. C. TERWILLIGER

Lester Neely
Wearne Beals

1910

W. C. TERWILLIGER, Principal

Harry Toy
Margaret Potts
Ebner Master
Susie Jones
Samuel Uncapher
Marguerite Jones
Lee Barlette
Bess Barger

1911

C. M. CHRISTLER, Principal

Mary Best

1912

D. B. PETERSON, Principal

Alma Master
Ruth Toy
Bessie Heeter
Lucy Brosnan
Grace Ritts
Cecil Foust

1913

D. B. PETERSON, Principal

Freda Keeler
Elmer Texter
Mary Logue
David Tippery
Levi Eaves
Glenna Hagan
Fred Fair

1914

D. B. PETERSON, Principal

Eva Amsler
Hilda Fillman
Bess Cushing
Mary Texter
Roland Ramsey
Cecil Peters
Kimple Garis
Florence Watson
Henry Johnson
Estella Shoup

1915

D. B. PETERSON, Principal

Leonard Miller
Bernice Amsler
Ralph Cope
Ethel Best
Charles Master
William Master
Nellie Vasey
Dorothy Nevel
Mary Morgan
Almeda Logue
Bessie Jordon
Garnet Jackson
Rebecca Ramsey
May Whitling

1916

D. B. PETERSON, Principal

Philip Koos
Bertha Amsler
Ethel Kissinger
Donald Summerville
Joe Summerville
Dewey Tippery
Dwight Murray
Ralph Freeman
Christina McElhattan
Ruth Amsler
Mary Heeter
Muriel Keeler
Claude Rupert
LeRoy Texter
Minnie Bicehouse
Catherine O'Brien
Claire Levy
Paul Toy

1917

MR. MOORE, Principal

Mildred Hawn
John Wetzell
Violet Henry

Fay Ashbaugh
Luther Weichsel
Ray Freeman
Albert O'Brien
Harry Cushing
Lucinda Tippery
Raymond Morgan
Edward Ashbaugh
Grace Logue
Lester Kiser
Leitha Kiser
Sarah Shoup
Clarence Fulmer

1918

R. L. HESSON, Principal

Mary Ashbaugh
Alice Amsler
Harrison Jones
Leona Ritts
Lucille Lawrence
Llewellyn Nevel
Jean Keeler
William Shoup
Amanda Jackson
Elizabeth Rupert
Meredith Kissinger
Freeman Ashbaugh
Ruth Logue
Anna Toy
Dorothy Jordon

1919

MR. GOLDEN, Principal

Myrna Conver
Crea Biery
Ethelda Neely
Charles Koos
Donald Watson

1920

B. M. DAVIS, Principal

John Altman
Perry Lovell
Emma Klingler
Ralph Amsler
Besie Summerville
Mildred Jones
Leonard Thompson
Florence Boyd
Hazel Caroll
Sue Breul

1921

J. H. KISER, Principal

Sarah Cushing
Isabel Jones
Ruth Rebert
Fred Amsler
Paul Ashbaugh
Nellie Levy
Rachel Jordon
Gladys Jones
Grace Spindler
Marjorie Shields
Sarah Morgan

1922

J. H. ISER, Principal

Finlye Bartow
Robert Shoup
Arthur Weicksel
Florence Riddle
Josephine Fleming

1923

J. H. KISER, Principal

May Altman
Cuvier Berlin
Dorothy Goff
Anna Dembeck
Mary Cushing
Carl Lovell
Myrna Master
Howard McLaine
Roy Nevel
Nellie Russell
Helen Shoup
Martha Shoup
Benjamin Wetzel

1924

M. I. FLOWER, Principal

John Robert Wallis
Virginia E. Brown
Audrey A. Bell
Rachel E. Carroll
Hazel I. Morgan
Althea G. Heeter
Helen E. Logue
Ruth E. Nevel
M. Marie Elliott

1925

M. I. FLOWER, Principal

Paul L. Amsler
Aldine Ashbaugh
Nedra R. Brown
Clell D. Hovis
M. Adelaide Harnish
Earl W. Klingler
Wilna Master
R. Stanley Miller

1926

M. I. FLOWER, Principal

C. LeRoy Ashbaugh
George Emery Mortimer
Helen L. Ritts
Ruth L. Morgan
Katherine Purucker
Elman Robert

1927

M. I. FLOWER, Principal

Irene Confer
Mabel Bostaph
Mildred Brown
Chester Eddinger
Martha Rupert

1928

M. I. FLOWER, Principal

Lena Carroll
Robert S. Amsler
Kenneth Fitzgerald
Allen R. Kagle
Agnes Price Boyd
Evelyn Jackson
Muriel Graff
Samuel J. Edinger
Helen M. Hanawalt

1929

MAURICE HEETER, Principal

Walter Jackson
Helen Ashbaugh
Arnold Hovis
Kenneth Altman
Blanche Best
Eva Jackson

J. C. Best
Hilda Vensel
Wilda Ketner

1930

This was the last class of the three year High School at St. Petersburg. It became part of the first graduating class from the new four year school built in 1930.

1931

E. H. DeVILDER, Principal

Arthur R. Ashbaugh
Eugene Robert Best
John C. Best
Wilda Edith Best
Velma Geraldine Best
Emma Lucy Eddinger
Mary Elizabeth Fleming
Francis M. Heckathorn
Madelin Mary Heeter
Margaret Roseann Jackson
Paul E. Klingensmith
Gilbert A. Lofgren
James LeRoy Lovell
Thomas Patrick Murray
Josephine Melaney
Kenneth B. Moyer
Gertrude Mirian Mullen
Richard N. Raybuck
Edward DuWayne Shoup
James Richard Teitsworth
Arthur W. Duwayne Toy
Elgie M. Vanwormer
Amy Willovine Gray
Virginia Louise Watson
Hilda Marie Vensel
Eva Lucille Davis

1932

E. H. DeVILDER, Principal

Laura C. Amsler
Frances M. Best
Evelyn Ruth Best
Russell R. Black
Goldie M. Carroll
Darius Ditty
Ida M. Downing
Adaline G. Ganoe
Alerda Maree Gerlack
John D. Graff
Ethel R. Jackson
Grace I. Klingensmith
Zella Elmeda Jackson
Hugh Leo Keating
Alice S. Lofgren
Ruth I. McFarland
Florence Gertrude Munson
Jean Panton
Norma Vivian Passauer
Carl A. Raybuck
Paul E. Shoup
Rea Jeanne Shoup
Leland Emerson Ritts
Robert B. Stubble
Beatrice A. Sloan
Evelyn Sweesy
Pauline J. Vensel
H. Eugene Watson
Russell E. Weeter
Ralph Alan Welton
Jane E. White

1933

E. H. DeVILDER, Principal

Russell F. Ashbaugh
Graydon Best Berlin
Robert Lee Cook
Donald C. Elliott
Wilson Lewis Ginder
Eugene Willard Miller
Edward William Morgan
Robert Meredith Rankin
Louis William Shoup
Jack Smith
Mary Barbara Carroll
Mary Helen Garris
Vivian Charlotte Hurlbert
Edythe Estelle Hovis
Jeane Kathryn Irwin
Helen Cleona McFarland
Helen Mae Passuer
Velma Viola Shoup
Lois Marie Shoup
Mary Genevieve Stubble
Jean Margaret Vasey
Zula Ruth Wentling

1934

E. H. DeVILDER, Principal

Dorothy Margaret Baldridge
Paul W. Berlin
Effie Roberta Carney
Margaret Veda Cooper
Anna Margaret Dunmire
Cathryn Blanche Galena
Geraldine Francis Garris
Eileen Gallagher
Carlyle Charles Irwin, Jr.
Grant W. Jackson
Edward C. Lofgren
Zelma Mae McMaster
Martha Naomi Meals
Chester Irving Munson
Helen Marie Obey
Esther Gladys Plunkard
Mabel Mary Plunkard
Helen Mae Shoup
Anna Maude Sutbble
Erdene Marie Toy
William Wallace Vensel
June Katherine Vasey
Nora Mae Weeter

1935

E. H. DeVILDER, Principal

Carl D. Ashbaugh
Arline F. Beals
Orville L. Black
Carl James Best
Hazel L. Carroll
Alice Coursancey Carr
John A. Defibaugh
Genevieve Rebecca Galena
James Ross Gano
Hazel Viola Garris
Mary Elizabeth Gates
Ruth Rachel Gardner
Leonard S. Heckathorn
Annie Elizabeth Goughler
Edward Gavin
Walter A. Konkle
Lawrence E. Hulbert

Lester George Lewis
Mary Louise Landis
Jack Edward McGuirk
Clyde S. McHenry
Marvin LeDoy Myers
Raymond A. Parks
Otis G. Raybuck
Marion VanWormer
Herbert Lyle Watson

1936

E. H. DeVILDER, Principal

Paul Lowaine Altman
Raymond Frederick Arendt
Harlen Roy Ashbaugh
Lawrence Clyde Botts
Robert Harvey Buchey
Wendell Eugene Francisco
Walter Eugene Garris
Helen Louise Grazier
James Earl Gross
Ruth Elnora Hale
Levon Jackson
Charles Stanley Jones
Anna Porterfield Melaney
Ella Rebecca Myers
Evelyn Lorraine Panton
Ida Arminta Raybuck
Clara Anna Reed
Leland DeWitt Shirey
Elizabeth Jane Shoup
Robert W. Toy
Marcella Delores Vensel
Mildred Mae Whitling

1937

E. H. DeVILDER, Principal

Edward Best
Robert Roy Best
Charles L. Fulmer
William E. Garris
Harry A. Gross
Walter E. Hahn
Clemons H. Jackson
Robert Bruce Jordon
Sharon L. McHenry
Kenneth McMaster
Richard L. Neely
William C. Ritts
Richard M. Wellman
Richard M. Ryberg
Robert Shirey
William A. Shoup
Mary Leona Boyd
Ruby Ellenberger
Jean E. Garris
Mary Konkle
Cleora McGuirk
Jean Morgan
Helen Myers
Madelyn E. Vasey
Naomi Jeannet Stubble

1938

E. H. DeVILDER, Principal

Jack Camp
John Carr
Jack Fillman
James Fowler
John Ganoe
Leroy Harnish
Arnel Jackson
Donald Konkle
John Lofgren
Delbert Murray
Walter Sweesy
Rea Jean Ashbough
Grace Francisco
Florence Galena
Eleanor Gates
Iris Johnston
Pauline Lewis
Gladys McMaster
Robert Noel
Elizabeth Panton
Stanley Bud Toy
Geraldine Waite
Arnold Jackson

1939

E. H. DeVILDER, Principal

Darrell Robert Frederick
Boyd W. Fulk, Jr.
George Richard Haley
Emmons Blaine Logue, Jr.
Earle L. Myers
Earl LeRoy McElhattan
William Charles McGuirk
John S. McHenry
Robert J. Milliren
Alvin C. Newberry
Thomas Lee Peters
John M. Shirey
Grace Ann Zella DeWalt
Edith Luella Dittman
Sara Ann Freeman
Jean Evelyn Hale
Ruth Maxine Logue
Florence Katherine Master
Helen I. McMaster
Audrey Louis Milliren
Janet Noel
Bertha Ann Louise Perkins
Isabelle Josephine Stubble
Muriel Josephine Reed
Katherine Lee Fowler
Robert Eugene Shirey

1940

E. H. DeVILDER, Principal

James R. Camp
Howard A. Carroll
Robert L. Cushing
William E. Dittman
Donald A. Elder
J. Howard Myers
Paul K. Wellman
Esther Faye Ashbaugh
Betty J. Fulmer
Doris Murine Fillman
Laura Jeane Fulmer
Geraldine Francis Ganoe
Anna Jane Gerber

Violet Jean Harnish
Martha Rachel Klingler
Helen Elaine Konkle
Bertha Elizabeth McHenry
Flora Belle McQuiston
Alice Kathleen McQuiston
Maxine Morgan
Anna Mae Sheakley
Bette Jean Shultz
Ethel Jane Toy
Rea L. Vensel

1941

E. H. DeVILDER, Principal

Donald W. Clawges
John B. Francisco
Robert E. Fulk
Cecil Robert Hale
Donald R. Hopper
Raymond L. McElhattan
Robert H. Myers
Robert E. Plunkard
John H. Potts
William James Uncapher
Bryan J. Wentling, Jr.
Anna Marie Altman
Velma Luella Best
Betty Olive Grazier
Helen Jane Haggerty
Phyllis Joan Heller
Mary Alice Hess
Lois Jean Hopper
Maxine Elliott Klingler
Evelyn Graff Mimm
Muriel Ailene Neely
Corrine I. Shirey
Marjorie E. Shultz
Helen J. Vensel
Robert Jackson

1942

E. H. DeVILDER, Principal

Madeline Ashbaugh
Martha Ashbaugh
Evelyn Bechtel
Sara Elder
Hilda Fillman
Helen Jean Frederick
Marilou Freeman
Helen Klingensmith
Jean Konkle
Alma Lowers
Helen McQuiston
Phyllis Myers
Loretta Sweesy
Marilyn Reed
Vincent Ashbaugh
Arthur Cushing
Meredith Dittman
Albert Edinger
John Fleming
Claude Frederick
George Green
John Irwin
Lawrence Linnon
Robert Linnon
Eugene McHenry
Harold Master
Orin McMaster
William Milliren
Donald Sherman
James Robertson
David Shirey

1943

E. H. DeVILDER, Principal

Helen Mae Garriss
Bernice Fulmer
Elizabeth Jeanne Robertson
Janet Isbaella Panton
Charles William Sheakley
Anna Mae Edinger
Denton Murray Kirkwood
Elizabeth Jean Gormley
Martha June Best
Robert E. Hopper
Ivan C. Best
Donna Hahn
Ruth Ellen Myers
Betty Irene France
William Lyle Neely
Beatrice Mae McElhattan
Helena Grace Wentling
Delbert Lroy Potts
Walter Leroy Hamilton
William B. Myers
William Mohn Heller

1944

GEORGE E. BLOOM, Principal

Norma Jean Ashbaugh
Ella Mae Bashline
Mary Jane Chechak
Pauline Alberta Dittman
Mary Frances Galena
Phyllis Elizabeth Hale
Darl H. Heller
Mildred Marie Leavy
Patricia Helen Logue
Beatrice Ann Master
Richard G. McHenry
Ruth Ella Milliren
Kathryn Louise Shields
James Wesley Shirey
Charles R. Vasey
Elizabeth Jane Heller

1945

G. E. BLOOM, Principal

Denton Ashbaugh
Rachel Ellen Ashbaugh
Edna L. Bechtel
June Best
Mary Isabelle Dearolph
Lois Edinger
Marilyn A. Fulmer
Patricia Ann Gates
Audene Hahn
Aldine Irwin
Peggy Brooks Kester
Kathleen King
Charles Frank Koos
Corrine Isabell Linnon
Lois Lorraine Linnon
Joe McElhattan
Freda Catherine McLaughlin
Martha G. Myers
Helen Jean Nevel
Kathryn Elizabeth Page
Robert LeRoy Platt
Susan Louise Shirey
Bette Louise Sweesy

1946

H. A. HARTMAN, Principal

Drusia Eddinger
Marilyn Edinger
Harvey Ganoe
Mary Jane Green
Jim Hale
Richard Harnish
Donna Irwin
Thelma Jackson
Nancy Kester
Marion Klingler
Daryl Myers
Harvey Potts
Gloria Reed
Sally Robertson
George Schenck
Walter Texter

1947

BUDD B. STEWART, Principal

Mary Lou Amsler
Jane Liken Ashbaugh
William Kahle Ashbaugh
William George Bartow
Geraldine Elizabeth Arminta Bechtel
George Cleveland Bunch
Pauline Elaine Carroll
Robert Eugene Fleming
Laura Jean France
Victor Newton Jameson
Edward Emil Koos
William Paul Linnon
Caroline Roberta Logue
Merle Dean McMaster
Yetta Jane Miller
James Benton Myers
Betty Jean Shields
Patricia Jean Shirey
Dean Khlare Shoup
Marshall Lynn Vasey

1948

BUDD B. STEWART, Principal

Mary Margaret Chapin
Dorothy Elizabeth Barlett
Charles Richard Noel
Elizabeth Ann Linnon
George Wesley Freeman
Bernice Pauline Nevel
Keith Master Ashbaugh
Maxine Elwanda Sherman
Ada Jane Master
Charles Glenn McMaster
Margaret Elizabeth Jameson
Glenn Paul Shirey
Mildred Elaine Watson
Don Leroy Wentling
Paul Francis McGuirk
Ruby Val Jean Jackson
Donald T. Cushing
Ruth Joan White
John Wallace Smith
Helen Roberta Deloe
Robert Lewis Page
Robert Allan Ashbaugh
John Wesley Potts
Ida Margaret Matthews
Helen Elizabeth McCall
Victoria Barbara Chechak
Mary Joan McQuiston
Lois Elvira Chadman
Nancy Marie McElhattan

1949

BUDD B. STEWART, Principal

Barbara Robertson
Frank Chechak
Anna Jean Uncapher
Sara Cushing
Robert Raybuck
Thelma Kohler
William Neely
Mary Belle Craig
Barbara Lee Master
Laura Lutsko
Kenneth Myers
Patricia Vay Hopper
Stanley Richard Texter
Thelma McHenry
Nancy Louise Whitling
William George Allison
Nancy Jane Bartow
Andrew Spirnock
Ronald D. Best
Rose Ellen Johnson
James Fleming

1950

BUDD B. STEWART, Principal

LaDonna Jean Hanst
Richard Leroy Reed
Ruby Jo Ann Parks
Charlotte Marie Best
Robert Charles Kunkle
Margie Bell Horton
Mary Frances Master
Elliott Earnest Ryder
Betty Ann McElhattan
Phyllis Maxine Nevel
George Wesley Henglein
Estella Harriet McHenry
Betty Lou Lowers
Edmond Rupert Fichte
Shirley Ann Page
Joyce Mae Shoup
Ronald Eugene Bowser
Bertha Joan Logue
Loretta Ann Novak
Paul Dean Ashbaugh
Naomi Marie Garris

1951

BUDD B. STEWART, Principal

Thomas B. Black
Dorothy Agnes Chechak
John Daniel Graff
Harry James Harnish
Peggy Jo Hopper
John K. Hale
Mary Elizabeth Ketner
James G. Irwin
Barbara Lee Mimm
Delores Anne Montgomery
Donald James Kunkle
Betty Avonelle Nevel
Jack F. Leavy
Thelma June Raybuck
Thomas Eugene Marshall
James Wesley McConnell
Betty Maxine Shoup
Ronald Eugene McHenry
Frank Eugene Pavlic
Bonnie Lee Shirey

Beverly Ann Shirey
Clifford Andrew Perkins
Burton Dean Roe
Harry Clair Sherman
Barbara Louise Shirey
Judd Franklin Wetzel
Dolores Agnes Spirnock
Darrell Elden White

1952

BUDD B. STEWART, Principal

Philomena Novak
Forrest Jackson
James Herzel
Kenneth King
Pauline Deloe
James Ashbaugh
Betty Bartow
Donna Best
Delores Bunch
William Couchenour
Ida Jackson
Kay Klingler
Shyrli Kribbs
Thomas Leavy
Helen Linamen
Peggy Linnon
Thomas McElhattan
Donald Myers
Homer Nevel
James Sheely
Richard Sherman
Donald Texter
Richard Watts

1953

BUDD B. STEWART, Principal

Alec Robertson
Joan Spirnock
Shirley Edinger
John Shaefer
Betty Hanst
Ronald Ashbaugh
Edward Chadman
Andrew Chechak
Anna Mae Drozda
Bradley Dunkle
Ronald Fleming
Marilyn Foust
Rawland Fox
Mildred Harnish
Richard Jordan
Shirley Jordan
Dwight Koos
Ernest Koos
Donald Lowers
Charlotte Neely
Roy Nevel
Thomas Page
Doris Raybuck
Richard Shoup
Joyce Watson

1954

BUDD B. STEWART, Principal

Robert Shoup
Terry Nevel
Donna Burrell
Mary Ellen Shreffler
David McQuiston
James Barlett
Steve Blackford
Thomas Bowser
Homer Ditty
John Edwards
Mary Anna Eakman
Richard Konkle
Kenneth Lemmon
Ralph Logue
Betty Matthews
Mary McGinnis
Shirley Parker
John Preston
Delores Watson
Darwin White

1955

BUDD B. STEWART, Principal

Edward Gobrecht
Arthur Bell
Allen Ingling
John Novak
Phyllis Klingler
William Asbridge
Nancy Ashbaugh
Nancy Brown
Michael Chechak
Robert Craig
Thelma Creese
Charles Deloe
Norma Fleming
Peggy Foust
Cleda Greenawalt
Robert Ketner
William Logue
Fred Miller
John Murray
Bill Shreffler
Raymond Spirnock
Maxine Texter
Wilbur Van Zandt
Barbara Yingling

Autographs

100

Autographs

Advertising



RWC

<p>FRED AND EDNA'S LUNCH</p> <p>FOXBURG AT THE BRIDGE</p>	<p>Compliments of</p> <p>LULLABY LANE SHOP</p> <p>EMLENTON, PA.</p>	<p>Compliments of</p> <p>KNOX BAKERY</p> <p>KNOX, PENNA.</p>
<p>L. & B. SUNOCO SERVICE</p> <p>Emlenton, R. D. 3, Pa.</p>	<p>J. A. DONALDSON</p> <p>Modern Farm Equipment</p> <p>Sales N A S H Service</p> <p>Dial 293 Emlenton, Pa.</p>	<p>SHAY'S</p> <p>Pennzoil Service Station</p> <p>Tires, Tubes, Gasoline, Oil</p> <p>Phone 191 Knox, Penna.</p>
<p>LINNON'S CLOVER FARM STORE</p> <p>MEATS — GROCERIES</p> <p>We Deliver</p> <p>EMLENTON, R. D., PA.</p>	<p>Compliments of</p> <p>MAIN STREET NEWS STAND</p> <p>Phone 206 EMLENTON, PA.</p>	<p>Compliments of</p> <p>RAY'S HOT DOG SHOP</p> <p>EMLENTON, PA.</p>
<p>CHUCK'S PENNZOIL STATION</p> <p>Charles E. Hanst, Mgr.</p> <p>Gasoline, Oil, Tires, Tubes</p> <p>Expert Washing and Greasing</p> <p>Phone 153 Knox, Pa.</p>	<p>Compliments of</p> <p>KNOX FARM SERVICE</p> <p>KNOX, PENNA.</p>	<p>Compliments of</p> <p>MARIE'S BEAUTY SHOP</p> <p>KNOX, PA.</p>
<p>Compliments of</p> <p>CITIES SERVICE STATION</p> <p>T. R. Krear</p> <p>EMLENTON, PA.</p>	<p>Compliments of</p> <p>DR. I. DANA KAHLE</p> <p>KNOX, PENNA.</p>	<p>Compliments of</p> <p>PANTHER SPRINGS</p> <p>Lunch and Service Station</p> <p>Gulf Gas</p> <p>EMLENTON, PA.</p>
<p>Compliments of</p> <p>PIROCH'S DRUG STORE</p> <p>EMLENTON, PA.</p>	<p>Compliments of</p> <p>KNOX FRUIT CO.</p> <p>KNOX, PENNA.</p>	<p>KNOX APPLIANCE</p> <p>Joe Logue, Prop.</p> <p>KNOX, PENNA.</p>
<p>Compliments of</p> <p>FRED H. REMBOLD</p> <p>EMLENTON, PA.</p>	<p>Compliments of</p> <p>STREAMLINE DINER</p> <p>Dorothy and Harry Hinman</p> <p>KNOX, PA.</p>	<p>KNOX GULF SERVICE</p> <p>Donald B. McMunn, Prop.</p> <p>GASOLINE — OIL</p> <p>Tires, Batteries, Accessories</p> <p>Washing & Lubrication Service</p> <p>Phone 205 Knox, Penna.</p>
<p>Compliments of</p> <p>DR. H. E. GRANT</p> <p>EMLENTON, PA.</p>	<p>Compliments of</p> <p>STROTMAN'S JEWELRY STORE</p> <p>EMLENTON, PA.</p>	<p>Compliments of</p> <p>BLAUSER ELECTRIC & PLUMBING CO.</p> <p>Phone 130 Knox, Pa.</p>

**THE
FARMERS NATIONAL BANK**

EMLENTON, PENNA.

Member of
The Federal Reserve Bank
and
Federal Deposit Insurance Corp.

BOB TRILL'S CROSSWAY SERVICE

PENNZOIL PRODUCTS

WE GIVE S. & H. GREEN STAMPS

Montgomery Ward Tires and Batteries

Phone 2846

PARKER, PA.

**COMPLIMENTS OF
SHERRY'S STORE
SLIGO, PA.**

**COMPLIMENTS OF
SAYLOR'S DINER**

Route 68

Rimersburg, Pa.

**COMPLIMENTS OF
A. S. THOMPSON
Rimersburg, Pa.**

**WHERE COULD YOU DO BETTER
THAN BANK WITH
THE OLD RELIABLE**

**THE FIRST
NATIONAL BANK
OF EMLENTON, PENNA.**

**Resources Over \$9,000,000.00
Doing Business at the Old Stand Since 1873**

COMPLIMENTS OF

T. P. HENRY LUMBER CO.

SLIGO, PA.

<p>Compliments of YOUNG'S SERVICE STATION PARKER, R. D. 1</p>	<p>Compliments of DR. GORDON GRAFF ST. PETERSBURG, PA.</p>	<p>Compliments of HEETER'S SERVICE STATION</p>
<p>Compliments of SUNRISE COFFEE SHOP PARKER, PA.</p>	<p>Compliments of HAHN'S PENNZOIL STATION ST. PETERSBURG, PA.</p>	<p>HAROLD A. KAPP GENERAL AUTO REPAIRS Oils and Greases Parts and Accessories LAMARTINE, PA.</p>
<p>Compliments of LOUIS CORSO STERLING SERVICE Phone 3426 PARKER, PA.</p>	<p>H. T. CHAPIN GENERAL MERCHANDISE Free Delivery Phone: Foxburg 2456 ST. PETERSBURG, PA.</p>	<p>MONROE SERVICE STATION Paul W. Berlin, Prop. MONROE, PA.</p>
<p>BERNIE'S RADIO SERVICE RADIO & TELEVISION Sales and Service Phone 2636 PARKER, PA.</p>	<p>Compliments of VASEY'S GARAGE ST. PETERSBURG, PA.</p>	<p>Compliments of THE CORNER CUPBOARD SHIPPENVILLE, PA.</p>
<p>Compliments of C. A. McNAUGHTON Head to Foot Outfitter PARKER, PA.</p>	<p>Compliments of LOTTIE SHOUP ST. PETERSBURG, PA.</p>	<p>Compliments of VILLAGE SERVICE STATION MOBIL GAS and OIL West Freedom, Pa.</p>
<p>Compliments of L. & R. DECORATING CLARION, PA.</p>	<p>Compliments of LOY C. GOBRECHT ALUM ROCK, PA.</p>	<p>Compliments of EDENBURG MOTOR CO. KNOX, PA.</p>
<p>Compliments of ROBERT KUNKLE ST. PETERSBURG, PA.</p>	<p>BEST WISHES To The CLASS OF 1955 J. CLYDE DINGER</p>	<p>MRS. CORA E. GATES Dry Goods, Clothing, Notions PARKER, PA.</p>
<p>Compliments of MERRELL H. MIMM ST. PETERSBURG, PA.</p>	<p>Compliments of ROY E. FOX GAS, OIL and ACCESSORIES</p>	<p>Compliments of DR. STEWART</p>

<p>Compliments of DEAN'S Greenhouse and Flower Shop Phone 2101 and 3301 PARKER, PA.</p>	<p>Compliments of THE WALTER HASKELL FURNITURE CO. Phone 36 RIMERSBURG, PA.</p>	<p>BEST WISHES To The CLASS OF 1955 ROSIE'S RESTAURANT SLIGO, PENNA.</p>
<p>Compliments of WHYTE'S CLOVER FARM STORE Thrift Plus Satisfaction PARKER, PA.</p>	<p>Compliments of C. E. STEWART PENNZOIL STATION Gas, Oil and Accessories Phone 2452 Sligo, Pa.</p>	<p>TRADING WITH KEYSTONE SUPPLY CO. You Teach Your Dollars To Have More Cents FOXBURG, PA.</p>
<p>Compliments of PARKER HOUSE HOTEL PARKER, PA.</p>	<p>Compliments of STEWART SERVICE STATION SLIGO, PENNA.</p>	<p>Compliments of HARRY'S MARKET FOXBURG, PA.</p>
<p>ARNER'S FLORIST SHOP "The Beauty of Our Business is Flowers" Phone 46M Rimersburg, Pa.</p>	<p>Compliments of P. J. OESTERLING & SON, Inc. Feeds, Seeds, Fertilizers SLIGO, PA.</p>	<p>C. A. BERLIN TURKEY FARM FOXBURG, PA.</p>
<p>Compliments of ARNER'S GREENHOUSE RIMERSBURG, PA.</p>	<p>Compliments of SLIGO NATIONAL BANK Complete Banking Service</p>	<p>Compliments of CORSO'S BEAUTY SHOP Phone: Foxburg 3-211 FOXBURG, PA.</p>
<p>Compliments of FIRST NATIONAL BANK OF RIMERSBURG, PA. Complete Banking Service</p>	<p>Compliments of T. R. SLAUGENHOUP GENERAL MERCHANDISE Sligo, Pa.</p>	<p>Compliments of ROBERTSON GARAGE FOXBURG, PA.</p>
<p>Compliments of CARNEY'S RESTAURANT Phone 21 RIMERSBURG, PA.</p>	<p>Compliments of McKINNEY'S MARKET Fine Stock of Dry Goods Phone 2469 Sligo, Pa.</p>	<p>Compliments of HILLCREST DAIRY FOXBURG, PA.</p>
<p>Compliments of W. T. CLARK COMPLETE WIRING SERVICE G. E. APPLIANCES Phone 90 Rimersburg, Pa.</p>	<p>Compliments of GUY M. HAWK Phone 4301 SLIGO, PA.</p>	<p>FOUST SERVICE STATION GUARANTEED SERVICE On All Makes of Cars AMOCO PRODUCTS Foxburg, Penna.</p>

SLIGO HARDWARE COMPANY

TAPPAN and MAGIC CHEF
GAS RANGES
Maytag and Dexter Washers
Hardware and Paint
Electrical Appliances

SLIGO, PA.

COMPLIMENTS OF

JOHN R. YINGLING

Authorized FORD Dealer

Dial 371

EMLENTON, PENNA.

COMPLIMENTS OF

BISHOP MOTOR COMPANY

BUICK and PONTIAC

At the Bridge

EMLENTON, PENNA.

COMPLIMENTS OF

H. & E. HARDWARE

EMLENTON, PENNA.

H. B. BEELS & SON

Complete Insurance Service

KNOX, PENNA

COMPLIMENTS OF

CHAPMAN MOTOR CO.

KNOX, PENNA

GARDNER GILMORE

WELDING
AND GENERAL REPAIRS
SLIGO, PENNA.

COMPLIMENTS OF

CORSO'S MARKET

PARKER, PA.

SILVER FOX INN

COCKTAILS
DINNERS, DANCING
FOXBURG, PA.

BETTER INSURANCE SERVICE

McELVAIN- ELDER AGENCY

John H. Pataky, Mgr.

Phone 3374

River Avenue

PARKER, PA.

BENDER & HENRY

KNOX, PENNA.

"Everything for the Builder"

Compliments of

C. B. BLACK

GENERAL INSURANCE

Box 334

Knox, Pa.

Compliments of

**CLARION COUNTY
FARM BUREAU**

KNOX, PENNA.

RHEA LUMBER CO.

LUMBER AND
BUILDERS SUPPLIES

Knox, Penna

**BOB'S
ATLANTIC SERVICE**

Tires, Tubes, Oil and
Accessories

KNOX, PENNA.

**LOGUE'S
STERLING SERVICE**

RADIO & TELEVISION
Sales and Service

R. D. No. 1 (West Freedom)
Phone: Parker 2921

PARKER, PA.

Compliments of

J. W. MILLER

Knox, R. D. 1, Pa.

FRESH MEATS
BY HOME DELIVERY

McCALL'S

MEN'S FURNISHINGS
LADIES' APPAREL

Phone 109

Knox, Penna.

CENTRAL GARAGE

W. P. Shakely
H. M. Boyer

KNOX, PENNA.

Compliments of

OIL CITY

NATIONAL BANK

KNOX OFFICE

Knox, Pennsylvania

Compliments of

**STUART'S FURNITURE
& APPLIANCES**

Phone 290

KNOX, PA.

W A T C H E S

Hamilton, Elgin, Bulova, Gruen,
Wadsworth, Hamilton,
Illinois and Westfield

DAVID A. KAUFMAN
CLARION, PA.

Compliments of

**FLOYD CREESE
WELDING SHOP**

Knox, R. D. 1, Pa.

Compliments of

KING'S RESTAURANT

EMLENTON, PA.

McCLUNE'S

STERLING SERVICE

Glenn H. McClune, Prop.

KNOX, PENNA.

PIERCE MOTOR CO.

DeSOTO and PLYMOUTH
Sales and Service

Westinghouse Appliances

Phone 183

KNOX, PA.

SERVICE — QUALITY
SATISFACTION

JOHN N. BOYER

Furniture and Undertaking
KNOX, PENNA.

Compliments of

KING'S DRUG STORE

The REXALL Store

Phone 74

Knox, Pa.

Compliments of

WHITEHILL'S LUNCH

EMLENTON, PA.

THE EMLENTON NEWS

"PRINTERS OF THE CARDINAL"

DIAL 435

EMLENTON, PENNA.

ZIMMERMAN
ENGRAVING COMPANY

SYKESVILLE, PENNSYLVANIA

Compliments of

**WHITEHILL
FUNERAL HOME**

Roy P. Stuart, Successor

Phone 182

KNOX, PA.

Compliments of

**SLICKER
PIPE & TOOL CO.**

KNOX, PA.

Compliments of

WATSON'S STORE

TURKEY CITY, PA.

Compliments of

J. R. DUNLAP

Fertilizer, Grains

Flour and Feed

Roofing, Hardware, Etc.

CALLENSBURG, PA.

Compliments of

HEETER'S

MEAT MARKET

CALLENSBURG, PA.

**PARKER
DRUG COMPANY**

The REXALL Store

Phone 2421

PARKER, PA.

DEAROLPH JEWELRY

Watch Repairing

Hamilton, Elgin, Bulova

The Latest in Jewelry

Phone 2099

PARKER, PA.

Compliments of

**BEN FRANKLIN
STORE**

Phone 83R2

RIMERSBURG, PA.

**RIMERSBURG
PLUMBING & HEATING
COMPANY**

Phone 58

RIMERSBURG, PA.

Compliments of

**HEETER
LUMBER COMPANY**

SLIGO, PA.

Compliments of

**JAMES PRESTON
FLORIST SHOP**

FOXBURG, PA.

Compliments of

EMIL LONG

EMLENTON, PA.

